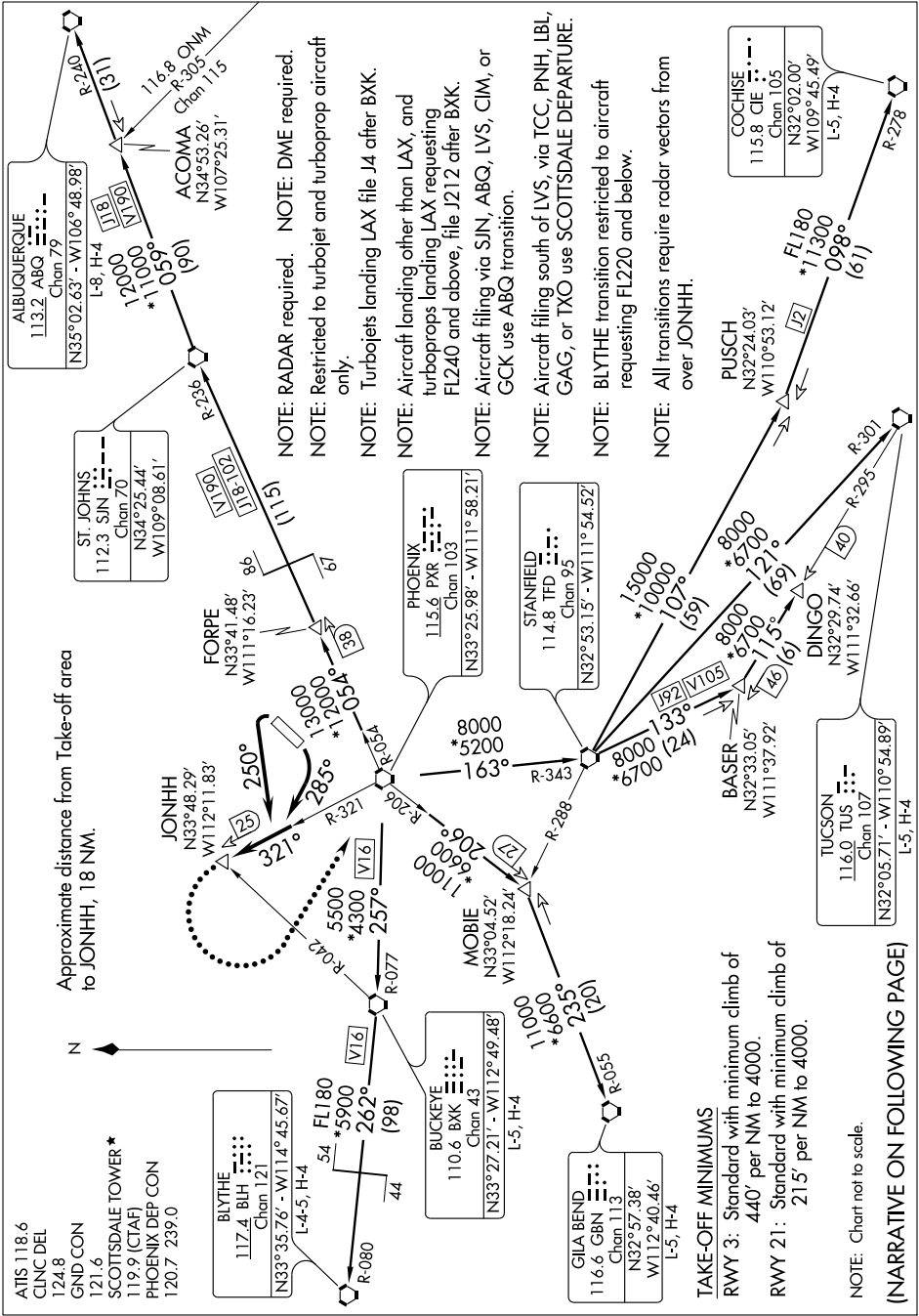


SCOTTSDALE SIX DEPARTURE

SL-5651 (FAA)

SCOTTSDALE (SDL)
SCOTTSDALE, ARIZONA

SW-4, 11 FEB 2010 to 11 MAR 2010



Approximate distance from Take-off area to JONHH, 18 NM.

- ATIS 118.6
- CLINC DEL 124.8
- GND CON 121.6
- SCOTTSDALE TOWER * 119.9 (CTAF)
- PHOENIX DEP CON 120.7 239.0

BLYTHER
117.4 BKH
Chan 121
N33°35.76' - W114°45.67'
L-4-5, H-4

BUCKEYE
110.6 BKK
Chan 43
N33°27.21' - W112°49.48'
L-5, H-4

GILA BEND
116.6 GBN
Chan 113
N32°57.38' - W112°40.46'
L-5, H-4

TAKE-OFF MINIMUMS
RWY 3: Standard with minimum climb of 440' per NM to 4000.
RWY 21: Standard with minimum climb of 215' per NM to 4000.

NOTE: Chart not to scale.

(NARRATIVE ON FOLLOWING PAGE)

- NOTE: RADAR required.
- NOTE: Restricted to turbojet and turboprop aircraft only.
- NOTE: Turbojets landing LAX file J4 after BKK.
- NOTE: Aircraft landing other than LAX, and turboprops landing LAX requesting FL240 and above, file J212 after BKK.
- NOTE: Aircraft filing via SJN, ABQ, LVS, CIM, or GCK use ABQ transition.
- NOTE: Aircraft filing south of LVS, via TCC, PNH, LBI, GAG, or TXO use SCOTTSDALE DEPARTURE.
- NOTE: BLYTHER transition restricted to aircraft requesting FL220 and below.
- NOTE: All transitions require radar vectors from over JONHH.

COCHISE
115.8 CIE
Chan 105
N32°02.00' - W109°45.49'
L-5, H-4

PUSCH
N32°24.03' - W110°53.12'

PHOENIX
115.6 PXR
Chan 103
N33°25.98' - W111°58.21'

STANFIELD
114.8 TFD
Chan 95
N32°53.15' - W111°54.52'

TUCSON
116.0 TUS
Chan 107
N32°05.71' - W110°54.89'
L-5, H-4

SW-4, 11 FEB 2010 to 11 MAR 2010

SCOTTSDALE SIX DEPARTURE