

STORMVILLE, NEW YORK

AL-5653 (FAA)

# VOR or GPS-A

STORMVILLE (N69)

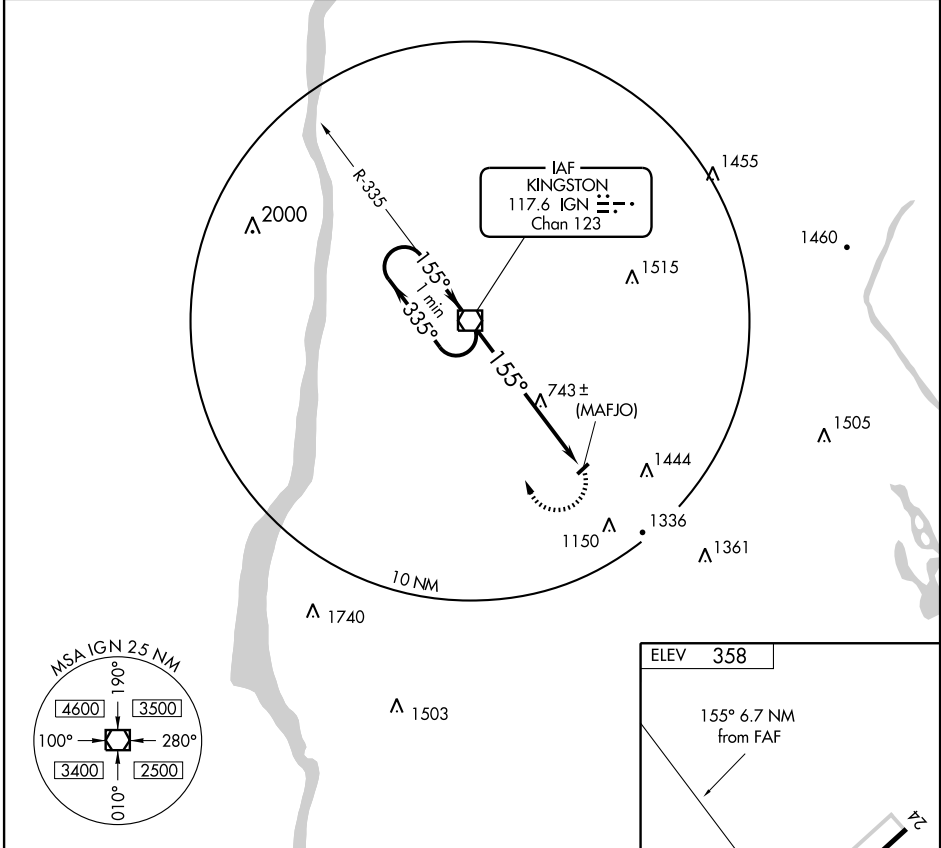
VOR/DME IGN <b>117.6</b> Chan <b>123</b>	APP CRS <b>155°</b>	Rwy Idg TDZE Apt Elev	<b>N/A</b> <b>N/A</b> <b>358</b>
--	------------------------	-----------------------------	--

Use Poughkeepsie altimeter setting.  
 NA Terrain rises rapidly East and Southeast of airport.  
 Procedure not authorized at night.

MISSED APPROACH: Climbing right turn to 3000 direct IGN VOR/DME and hold.

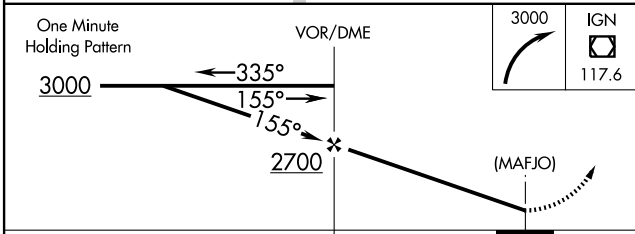
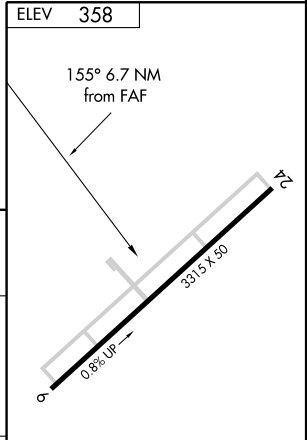
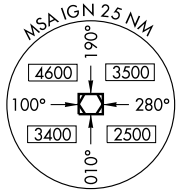
NEW YORK APP CON **132.75 363.1**

UNICOM **122.8** (CTAF)



NE-2, 19 NOV 2009 to 17 DEC 2009

NE-2, 19 NOV 2009 to 17 DEC 2009



CATEGORY	A	B	C	D	FAF to MAP 6.7 NM					
CIRCLING	1860-3 1502 (1600-3)		NA		Knots	60	90	120	150	180
					Min:Sec	6:42	4:28	3:21	2:41	2:14

STORMVILLE, NEW YORK  
Amdt 4A 06103

41°35'N - 73°44'W

# VOR or GPS-A

STORMVILLE (N69)