

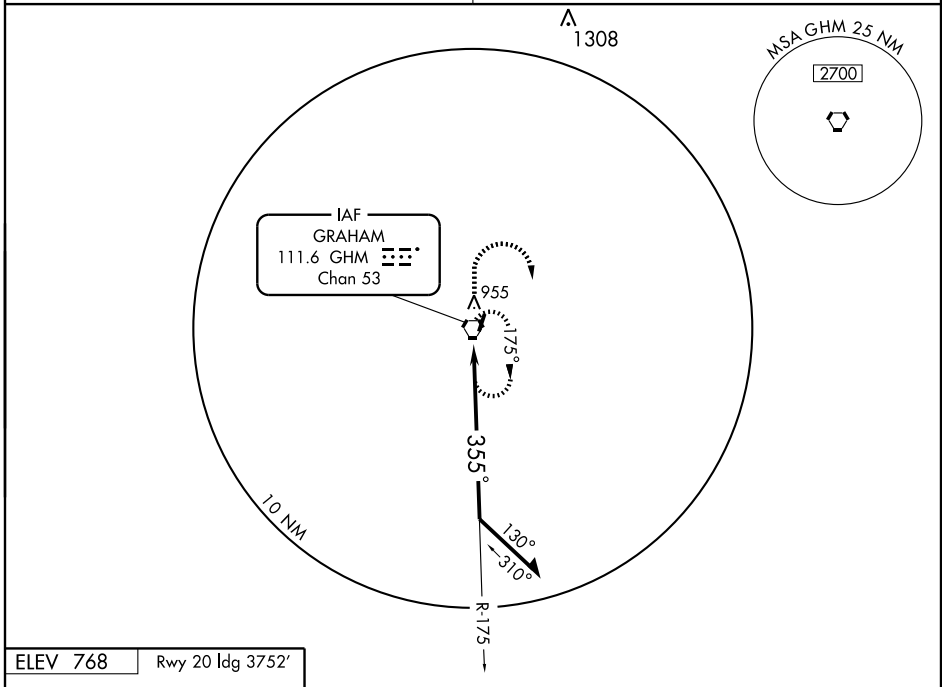
CENTERVILLE, TENNESSEE

AL-5660 (FAA)

VORTAC GHM 111.6 Chan 53	APP CRS 355°	Rwy Idg 4002 TDZE 768 Apt Elev 768
--	------------------------	---

VOR RWY 2
CENTERVILLE MUNI (GHM)

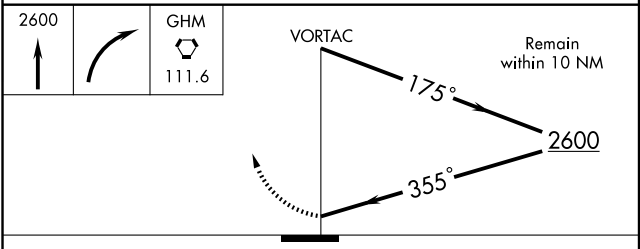
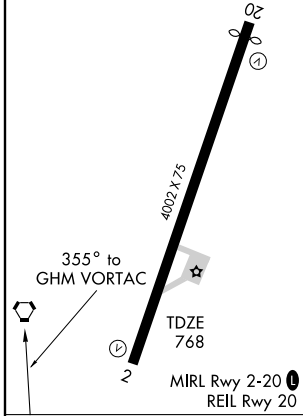
<p>▼ Obtain local altimeter on CTAF, if not received</p> <p>▲ NA use Nashville altimeter setting.</p>	<p>MISSED APPROACH: Climb to 2600 then right turn direct GHM VORTAC and hold.</p>
<p>MEMPHIS CENTER 125.85 381.4</p>	<p>UNICOM 122.8 (CTAF) L</p>



SE-1, 11 MAR 2010 to 08 APR 2010

SE-1, 11 MAR 2010 to 08 APR 2010

ELEV 768	Rwy 20 Idg 3752'
----------	------------------



CATEGORY	A	B	C	D
S-2	1240-1	472 (500-1)	1240-1¼ 472 (500-1¼)	1240-1½ 472 (500-1½)
CIRCLING	1240-1	472 (500-1)	1240-1½ 472 (500-1½)	1320-2 552 (600-2)
NASHVILLE ALTIMETER SETTING MINIMUMS				
S-2	1440-1	672 (700-1)	1440-2 672 (700-2)	1440-2¼ 672 (700-2¼)
CIRCLING	1440-1	672 (700-1)	1440-2 672 (700-2)	1440-2¼ 672 (700-2¼)

Knots	60	90	120	150	180
Min:Sec					

CENTERVILLE, TENNESSEE
Amdt 6 05020

35° 50' N - 87° 27' W

CENTERVILLE MUNI (GHM)
VOR RWY 2