

PETERSBURG, VIRGINIA

AL-5664 (FAA)

# RNAV (GPS) RWY 23

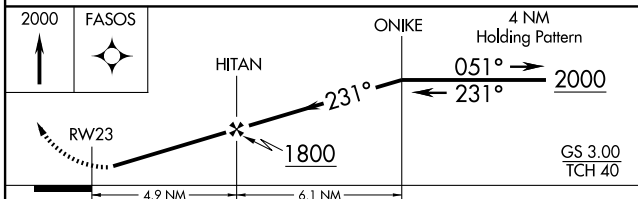
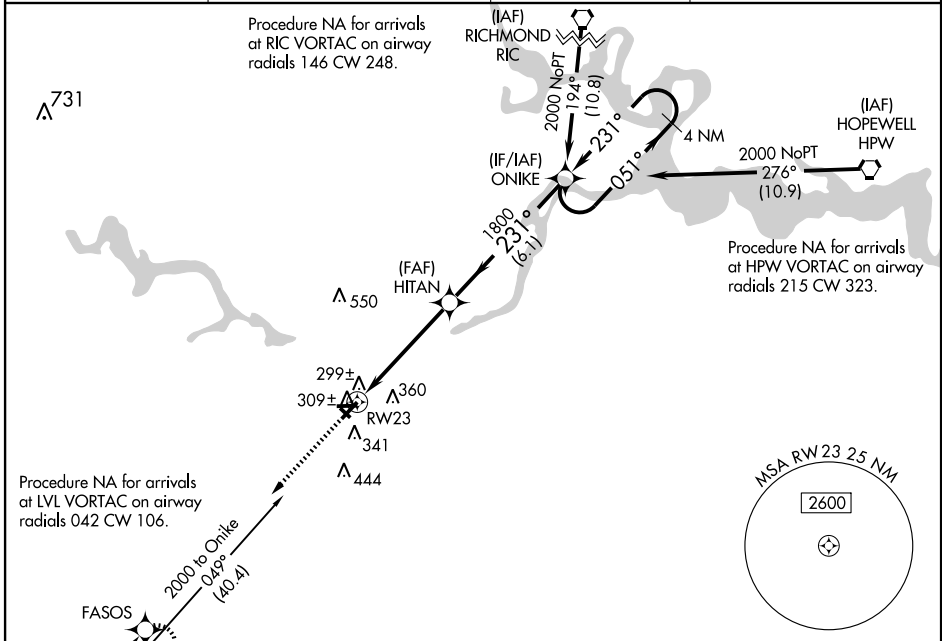
PETERSBURG / DINWIDDIE COUNTY (PTB)

WAAS CH <b>86706</b> <b>W23A</b>	APP CRS <b>231°</b>	Rwy Idg TDZE <b>191</b> Apt Elev <b>193</b>	<b>5002</b>
--	------------------------	---	-------------

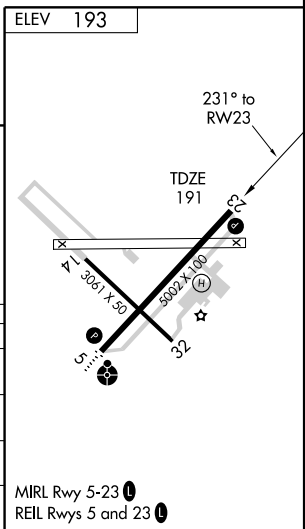
▼ For uncompensated Baro-VNAV systems, LNAV/VNAV NA below -1.5°C (5°F) or above 54°C (130°F). DME/DME RNP-0.3 NA. When local altimeter setting not received, use Chesterfield County altimeter setting and increase all DAs/MDAs 40 feet. LPV and LNAV/VNAV all Cats visibility ¼ mile and LNAV Cat C ½ mile. Visibility reduction by helicopters NA.

MISSED APPROACH: Climb to 2000 direct FASOS and hold.

AWOS-3 <b>133.325</b>	POTOMAC APP CON <b>134.7 307.2</b>	GCO <b>135.075</b>	UNICOM <b>122.7 (CTAF) 0</b>
--------------------------	---------------------------------------	-----------------------	---------------------------------



CATEGORY	A	B	C	D
LPV DA	499-1	308 (400-1)		NA
LNAV/VNAV DA	644-1½	453 (500-1½)		NA
LNAV MDA	560-1	369 (400-1)		NA
CIRCLING	660-1	467 (500-1)	660-1½ 467 (500-1½)	NA



NE-3, 19 NOV 2009 to 17 DEC 2009

NE-3, 19 NOV 2009 to 17 DEC 2009

PETERSBURG, VIRGINIA  
Amdt 1 09127

37°11'N - 77°30'W

PETERSBURG / DINWIDDIE COUNTY (PTB)  
**RNAV (GPS) RWY 23**