

VOR RWY 23

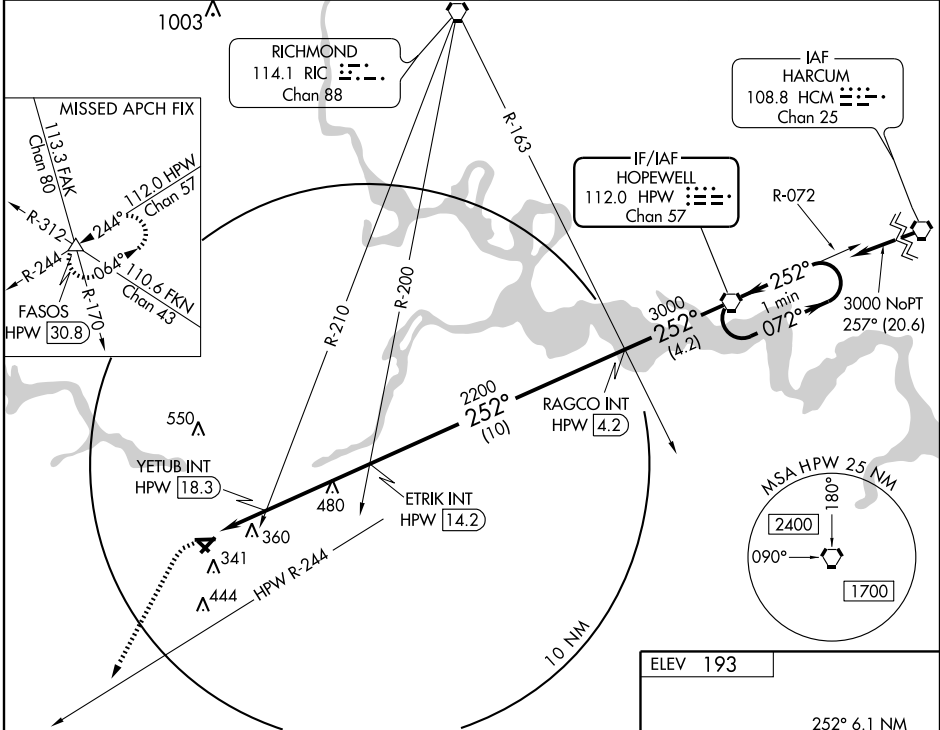
PETERSBURG / DINWIDDIE COUNTY (PTB)

VORTAC HPW 112.0 Chan 57	APP CRS 252°	Rwy Idg TDZE Apt Elev 5002 192 193
---------------------------------------	------------------------	--

▼ Visibility reduction by helicopters NA.
▲ When local altimeter setting not received, use Chesterfield County altimeter setting and increase all MDAs 40 feet.

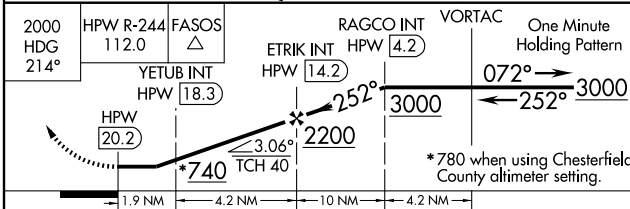
MISSED APPROACH: Climb to 2000 via heading 214° and HPW R-244 to FASOS INT/HPW 30.8 DME and hold.

AWOS-3 133.325	POTOMAC APP CON 134.7 307.2	GCO 135.075	UNICOM 122.7 (CTAF) 0
--------------------------	---------------------------------------	-----------------------	--

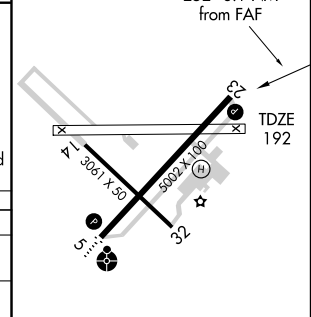


NE-3, 19 NOV 2009 to 17 DEC 2009

NE-3, 19 NOV 2009 to 17 DEC 2009



ELEV 193



CATEGORY	A	B	C	D
S-23	740-1 548 (600-1)	740-1¼ 548 (600-1¼)	740-1½ 548 (600-1½)	NA
CIRCLING	740-1 547 (600-1)	740-1¼ 547 (600-1¼)	740-1½ 547 (600-1½)	NA
YETUB FIX MINIMUMS (DUAL VOR RECEIVERS OR DME REQUIRED)				
S-23	620-1 428 (500-1)	620-1¼ 428 (500-1¼)	620-1½ 428 (500-1½)	NA
CIRCLING	660-1 467 (500-1)	660-1¼ 467 (500-1¼)	660-1½ 467 (500-1½)	NA

MIRL Rwy 5-23 0					
REIL Rwys 5 and 23 0					
FAF to MAP 6.1 NM					
Knots	60	90	120	150	180
Min:Sec	6:06	4:04	3:03	2:26	2:02