

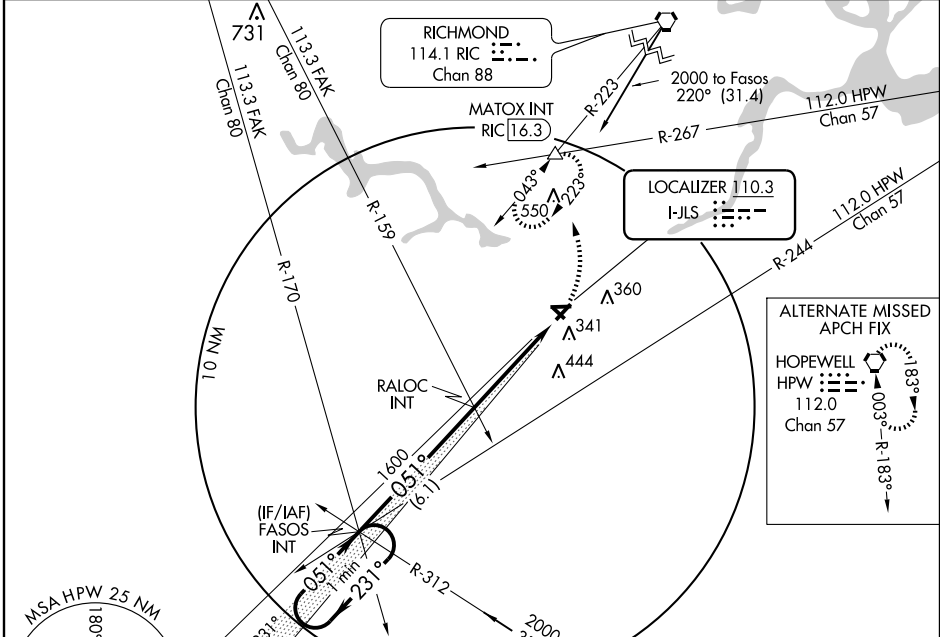
# LOC RWY 5

PETERSBURG / DINWIDDIE COUNTY (PTB)

LOC I-JLS <b>110.3</b>	APP CRS <b>051°</b>	Rwy Idg <b>5002</b>
		TDZE <b>193</b>
		Apt Elev <b>193</b>

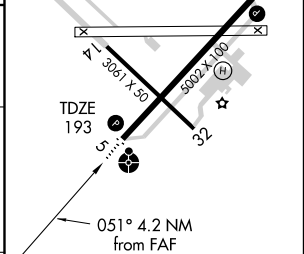
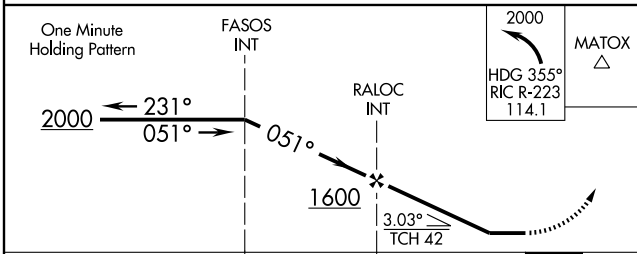
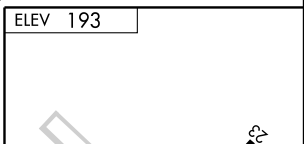
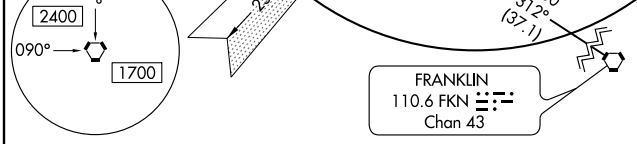
<p>Inoperative table does not apply to S-5 Cat C. When local altimeter setting not received, use Chesterfield County altimeter setting and increase all MDAs 40 feet and Cat C visibility 1/4 mile.</p>	<p>ODALS</p>	<p>MISSED APPROACH: Climbing left turn to 2000 via heading 355° and RIC R-223 to MATOX Int/RIC 16.3 DME and hold.</p>

AWOS-3 <b>133.325</b>	POTOMAC APP CON <b>134.7 307.2</b>	GCO <b>135.075</b>	UNICOM <b>122.7 (CTAF) 0</b>
--------------------------	---------------------------------------	-----------------------	---------------------------------



NE-3, 11 FEB 2010 to 11 MAR 2010

NE-3, 11 FEB 2010 to 11 MAR 2010



CATEGORY	A	B	C	D
S-5	680-3/4 487 (500-3/4)		680-1 1/4 487 (500-1 1/4)	NA
CIRCLING	680-1 487 (500-1)		680-1 1/2 487 (500-1 1/2)	NA

MIRL Rwy 5-23	
REIL Rws 5 and 23	
FAF to MAP 4.2 NM	
Knots	60 90 120 150 180
Min:Sec	4:12 2:48 2:06 1:41 1:24