

RNAV (GPS) RWY 5

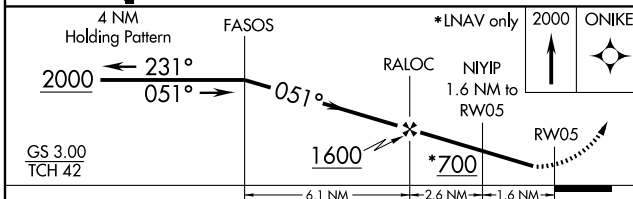
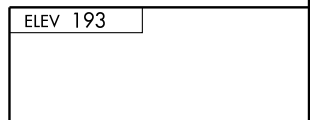
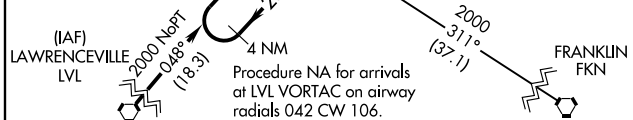
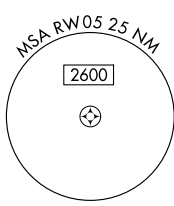
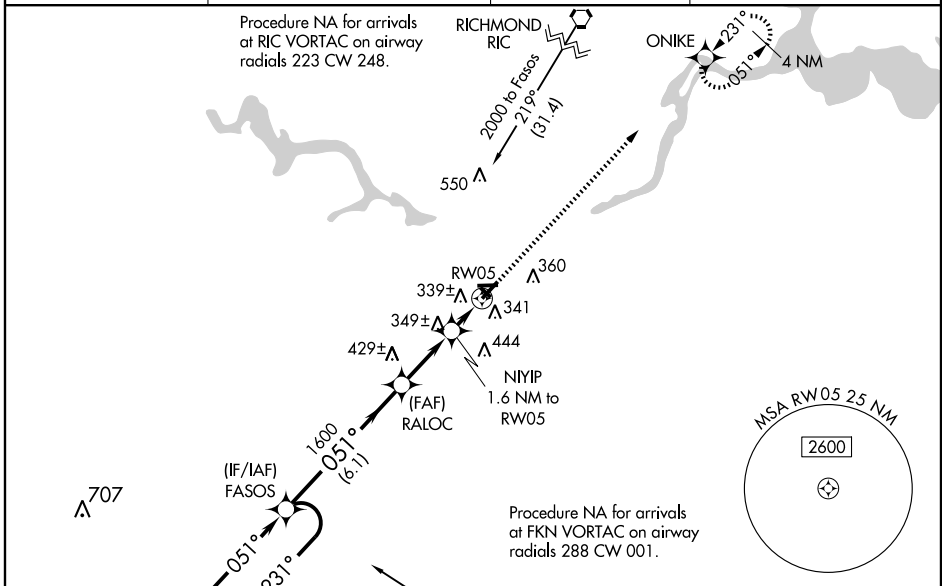
PETERSBURG / DINWIDDIE COUNTY (PTB)

WAAS CH 70705 W05A	APP CRS 051°	Rwy Idg TDZE 193 Apt Elev 193	5002
--	------------------------	---	-------------

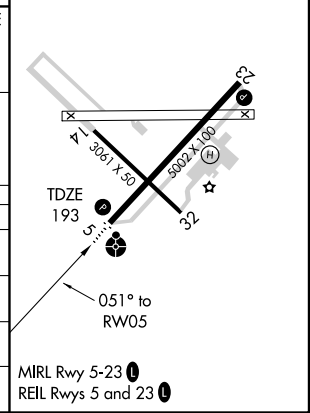
▼ Inoperative table does not apply to LNAV/VNAV and LNAV Cat C. For uncompensated Baro-VNAV systems, LNAV/VNAV NA below -15°C (5°F) or above 54°C (130°F).
▲ DME/DME RNP-0.3 NA. When local altimeter setting not received, use Chesterfield County altimeter setting and increase all DAs/MDAs 40 feet, and LNAV/VNAV all Cats visibility ¼ mile. Baro-VNAV NA when using Chesterfield County altimeter setting. Visibility reduction by helicopters NA.

ODALS
 MISSED APPROACH: Climb to 2000 direct ONIKE and hold.

AWOS-3 133.325	POTOMAC APP CON 134.7 307.2	GCO 135.075	UNICOM 122.7 (CTAF) 0
--------------------------	---------------------------------------	-----------------------	---------------------------------



CATEGORY	A	B	C	D
LPV DA	529-1¼	336 (400-1¼)		NA
LNAV/VNAV DA	620-1½	427 (500-1½)		NA
LNAV MDA	600-¾	407 (500-¾)	600-1¼ 407 (500-1¼)	NA
CIRCLING	660-1	467 (500-1)	660-1½ 467 (500-1½)	NA



NE-3, 11 MAR 2010 to 08 APR 2010

NE-3, 11 MAR 2010 to 08 APR 2010