

# RNAV (GPS) RWY 18

FORT SCOTT MUNI (F'SK)

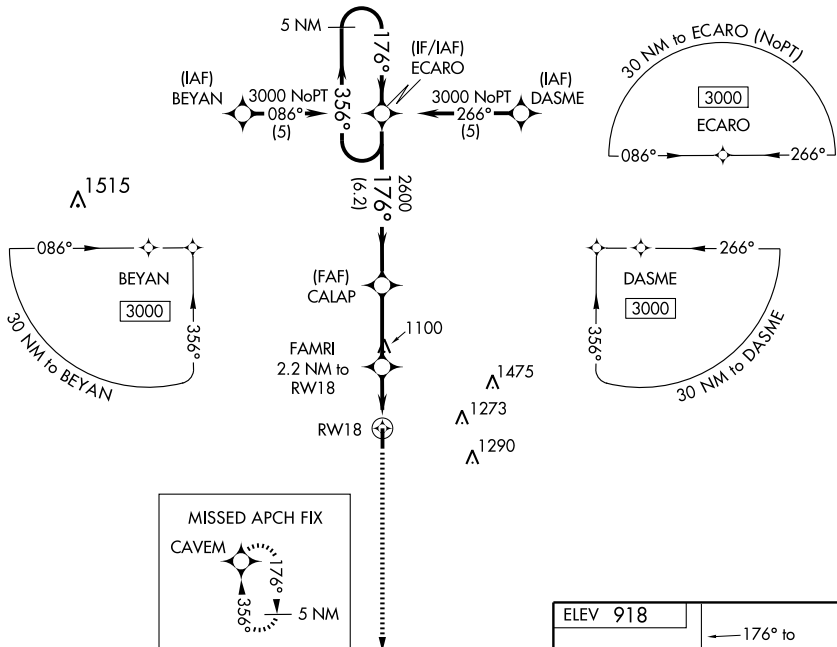
WAAS CH <b>50404</b> W18A	APP CRS <b>176°</b>	Rwy Idg TDZE Apt Elev	<b>4403</b> <b>914</b> <b>918</b>
---------------------------------	------------------------	-----------------------------	---

**▽** If local altimeter setting not received, use Chanute altimeter setting and increase all DAs 93 feet and all MDAs 100 feet. BARO-VNAV NA when using Chanute altimeter setting. For uncompensated BARO-VNAV systems, LNAV/VNAV NA below -16°C (4°F) or above 47°C (116°F). DME/DME RNP-0.3 NA. Visibility reduction by helicopters NA.

**△** NA

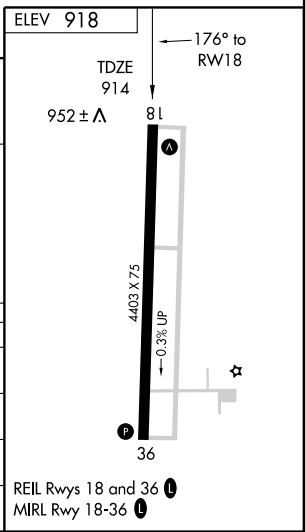
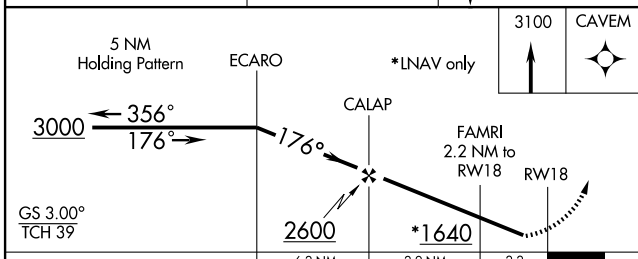
MISSED APPROACH: Climb to 3100 direct CAVEM and hold.

AWOS-3 <b>124.425</b>	KANSAS CITY CENTER <b>125.55 327.0</b>	UNICOM <b>122.8 (CTAF) 0</b>
--------------------------	---	---------------------------------



NC-2, 19 NOV 2009 to 17 DEC 2009

NC-2, 19 NOV 2009 to 17 DEC 2009



CATEGORY	A	B	C	D
LPV DA		1164-1	250 (300-1)	
LNAV/VNAV DA		1212-1	298 (300-1)	
LNAV MDA		1220-1	306 (400-1)	
CIRCLING	1280-1 362 (400-1)	1380-1 462 (500-1)	1380-1½ 462 (500-1½)	1480-2 562 (600-2)