

# RNAV (GPS) RWY 36

FORT SCOTT MUNI (F'SK)

WAAS CH <b>56504</b> W36A	APP CRS <b>356°</b>	Rwy Idg TDZE Apt Elev	<b>4403</b> <b>918</b> <b>918</b>
---------------------------------	------------------------	-----------------------------	---

**▽** If local altimeter setting not received, use Chanute altimeter setting and increase all DAs 93 feet and all MDAs 100 feet. BARO-VNAV NA when using Chanute altimeter setting. For uncompensated BARO-VNAV systems, LNAV/VNAV NA below -16°C (4°F) or above 47°C (116°F). DME/DME RNP-0.3 NA. Visibility reduction by helicopters NA.

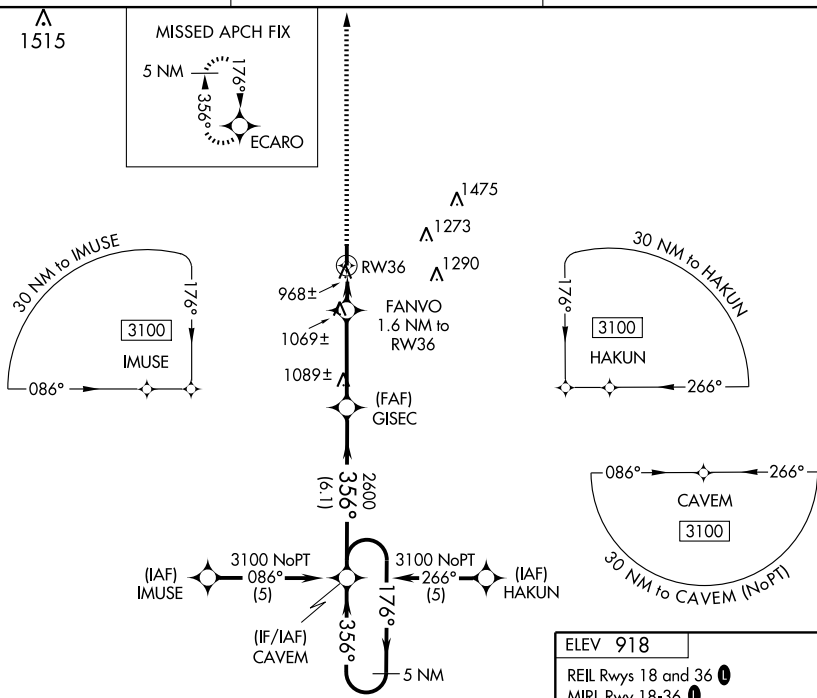
**⚠ NA**

MISSED APPROACH: Climb to 3000 direct ECARO and hold.

AWOS-3  
**124.425**

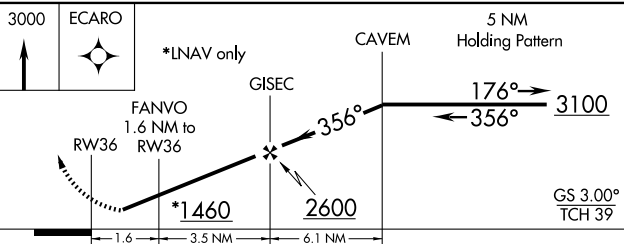
KANSAS CITY CENTER  
**125.55 327.0**

UNICOM  
**122.8 (CTAF) ①**



NC-2, 19 NOV 2009 to 17 DEC 2009

NC-2, 19 NOV 2009 to 17 DEC 2009



ELEV 918

REIL Rwy 18 and 36 ①

MIRL Rwy 18-36 ①

Obstacle chart details:

- Obstacle height: 81 ft AGL
- Obstacle dimensions: 4403 x 75 ft
- Obstacle clearance: 0.3% UP
- TDZE 918
- Obstacle distance from RWY 36: 36 ft
- Bearing: 356° to RW36

CATEGORY	A	B	C	D
LPV DA	1189-1 271 (300-1)			
LNAV/ VNAV DA	1240-1¼ 322 (400-1¼)			
LNAV MDA	1320-1	402 (500-1)	1320-1¼	402 (500-1¼)
CIRCLING	1320-1 402 (500-1)	1380-1 462 (500-1)	1380-1½ 462 (500-1½)	1480-2 562 (600-2)