

# NDB RWY 18

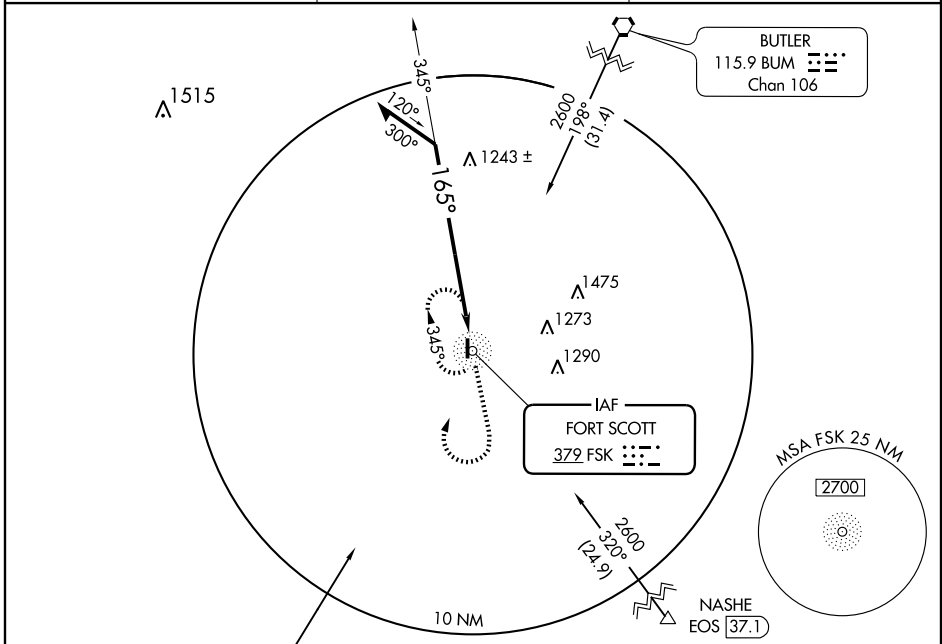
FORT SCOTT MUNI (F'SK)

NDB FSK <b>379</b>	APP CRS <b>165°</b>	Rwy Idg TDZE Apt Elev	<b>4403</b> <b>914</b> <b>918</b>
-----------------------	------------------------	-----------------------------	---

▼ If local altimeter setting not received, use Chanute altimeter setting and increase all MDAs 100 feet.  
▲ NA Visibility reduction by helicopters NA.

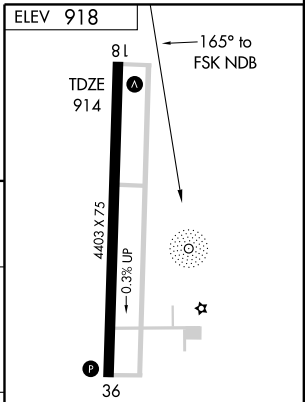
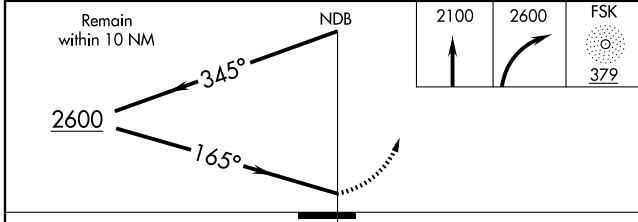
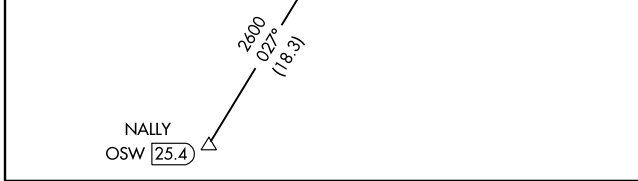
MISSED APPROACH: Climb to 2100 then climbing right turn to 2600 direct FSK NDB and hold.

AWOS-3 <b>124.425</b>	KANSAS CITY CENTER <b>125.55 327.0</b>	UNICOM <b>122.8</b> (CTAF) <b>①</b>
--------------------------	---	--



NC-2, 19 NOV 2009 to 17 DEC 2009

NC-2, 19 NOV 2009 to 17 DEC 2009



CATEGORY	A	B	C	D
S-18	1660-1 746 (800-1)	1660-1¼ 746 (800-1¼)	1660-2¼ 746 (800-2¼)	1660-2½ 746 (800-2½)
CIRCLING	1660-1 742 (800-1)	1660-1¼ 742 (800-1¼)	1660-2¼ 742 (800-2¼)	1660-2½ 742 (800-2½)

REIL Rwy 18 and 36 **①**  
MIRL Rwy 18-36 **①**

Knots	60	90	120	150	180
Min:Sec					