

VORTAC GLL 114.2 Chan 89	APP CRS 248°	Rwy Idg TDZE Apt Elev N/A N/A 5016
--	------------------------	--

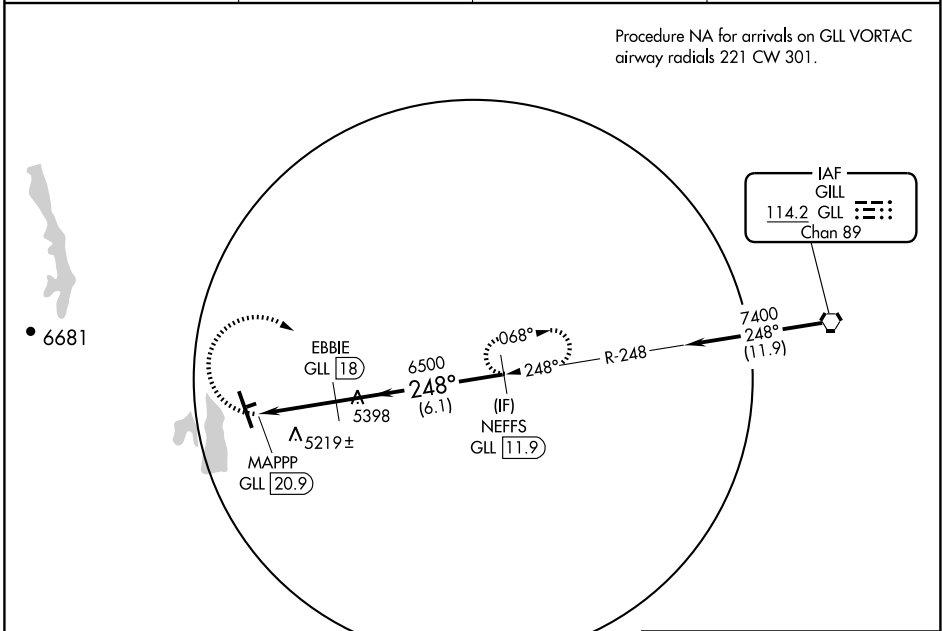
VOR/DME-A
FORT COLLINS-LOVELAND MUNI (FNL)

▼ Circling to Rwy 6/24 NA at night.
▲ When local altimeter setting not received, use Denver Intl altimeter setting and increase all MDA 160 feet and Cat C/D visibility ¼ mile.

MISSED APPROACH: Climbing right turn to 7400 via GLL VORTAC R-248 to NEFFS/GLL 11.9 DME and hold.

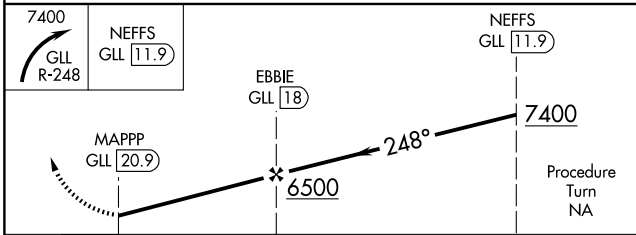
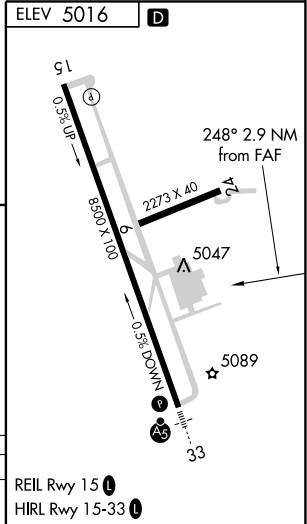
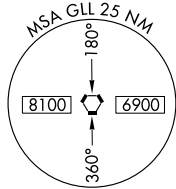
AWOS-3 135.075	DENVER APP CON 134.85 251.125	CLNC DEL 120.25	UNICOM 122.7 (CTAF) 0
--------------------------	---	---------------------------	---------------------------------

Procedure NA for arrivals on GLL VORTAC airway radials 221 CW 301.



SW-1, 11 MAR 2010 to 08 APR 2010

SW-1, 11 MAR 2010 to 08 APR 2010



CATEGORY	A	B	C	D
CIRCLING	5500-1 484 (500-1)	5500-1¼ 484 (500-1¼)	5520-1½ 504 (600-1½)	5580-2 564 (600-2)

REIL Rwy 15 **0**
HIRL Rwy 15-33 **0**