

# ILS or LOC RWY 33

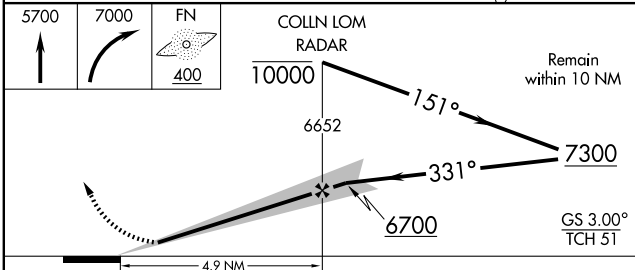
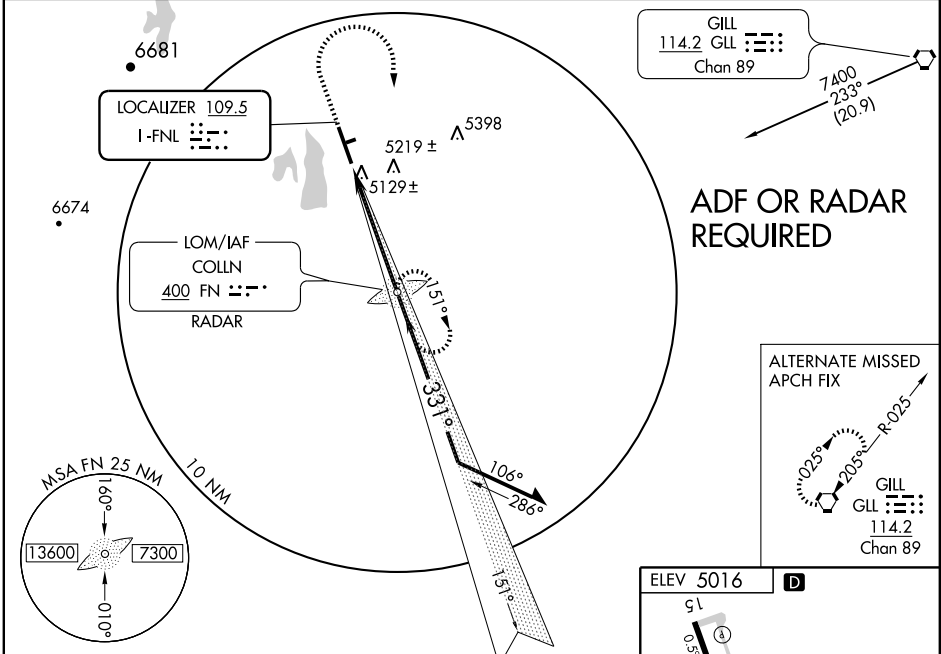
FORT COLLINS-LOVELAND MUNI (FNL)

LOC I-FNL <b>109.5</b>	APP CRS <b>331°</b>	Rwy Idg TDZE Apt Elev	<b>8500</b> <b>5016</b> <b>5016</b>
---------------------------	------------------------	-----------------------------	---

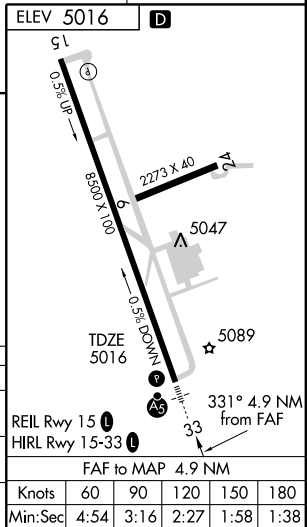
**⚠ NA** Circling to Rwy 6/24 NA at night. ADF or RADAR required.  
When local altimeter setting not received, use Denver Infil altimeter setting and increase DA 147 feet and all MDA 160 feet. Increase S-ILS 33 visibility all Cats ¼ mile, S-LOC 33 Cat C/D visibility ½ mile, and Circling Cat C/D visibility ¼ mile. For inoperative MALSR, when using Denver Infil altimeter setting increase S-ILS 33 visibility all Cats to ½ mile.

**MALSR**  
**AS** MISSED APPROACH: Climb to 5700 then climbing right turn to 7000 direct COLLN LOM and hold.

AWOS-3 <b>135.075</b>	DENVER APP CON <b>134.85 251.125</b>	CINC DEL <b>120.25</b>	UNICOM <b>122.7 (CTAF)</b>
--------------------------	---	---------------------------	-------------------------------



CATEGORY	A	B	C	D
S-ILS 33	5216-½ 200 (200-½)			
S-LOC 33	5380-½ 364 (400-½)		5380-¾ 364 (400-¾)	
CIRCLING	5500-1 484 (500-1)	5520-½ 504 (600-½)	5580-2 564 (600-2)	



SW-1, 11 MAR 2010 to 08 APR 2010

SW-1, 11 MAR 2010 to 08 APR 2010