

RNAV (GPS) RWY 35

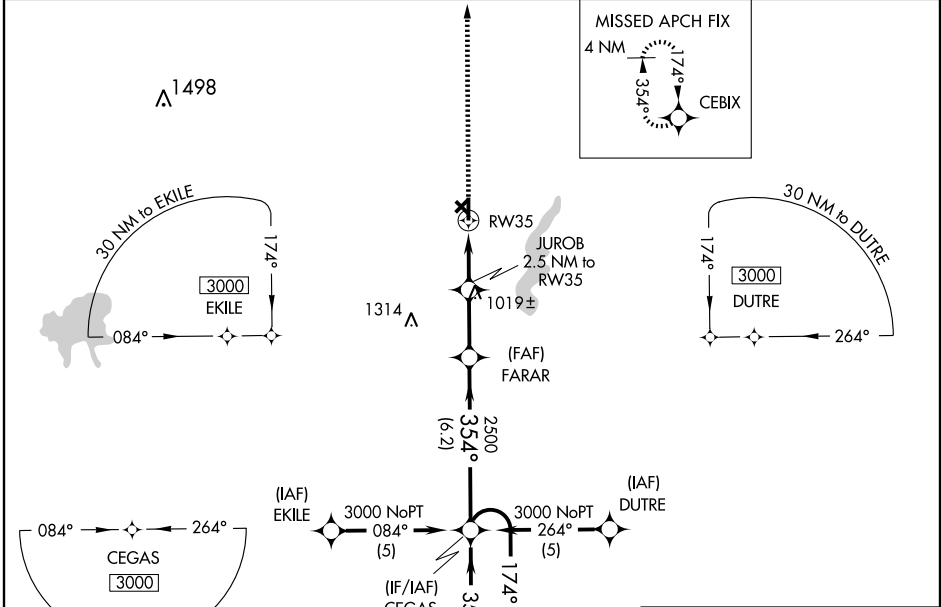
PARSONS/ TRI-CITY (PPF)

WAAS CH 78208 W35A	APP CRS 354°	Rwy Idg 5000 TDZE 879 Apt Elev 900
--	------------------------	---

Baro-VNAV NA when using Coffeyville Muni altimeter setting. For uncompensated Baro-VNAV systems, LNAV/VNAV NA below -16°C (4°F) or above 54°C (130°F). DME/DME RNP-0.3 NA. Visibility reduction by helicopters NA. When local altimeter setting not received, use Coffeyville Muni altimeter setting and increase all DA 54 feet and LNAV/VNAV visibility ½ mile all Cats; increase all MDA 60 feet.

MISSED APPROACH: Climb to 3000 direct CEBIX and hold.

ASOS 118.175	KANSAS CITY CENTER 132.9 279.5	UNICOM 123.0 (CTAF)
------------------------	--	-------------------------------

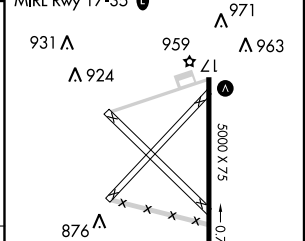
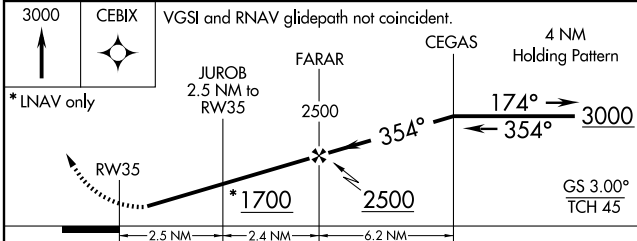


NC-2, 11 MAR 2010 to 08 APR 2010

NC-2, 11 MAR 2010 to 08 APR 2010



ELEV 900
REIL Rwy 17 and 35
MIRL Rwy 17-35



CATEGORY	A	B	C	D
LPV DA		1129-1 250 (300-1)		NA
LNAV/VNAV DA		1173-1 294 (300-1)		NA
LNAV MDA	1300-1	421 (400-1)	1300-1 ½ 421 (400-1 ½)	NA
CIRCLING	1340-1 440 (500-1)	1360-1 460 (500-1)	1360-1 ½ 460 (500-1 ½)	NA