

DENVER, COLORADO


AL-5715 (FAA)

NDB RWY 35R

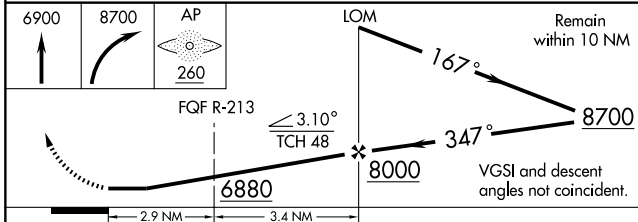
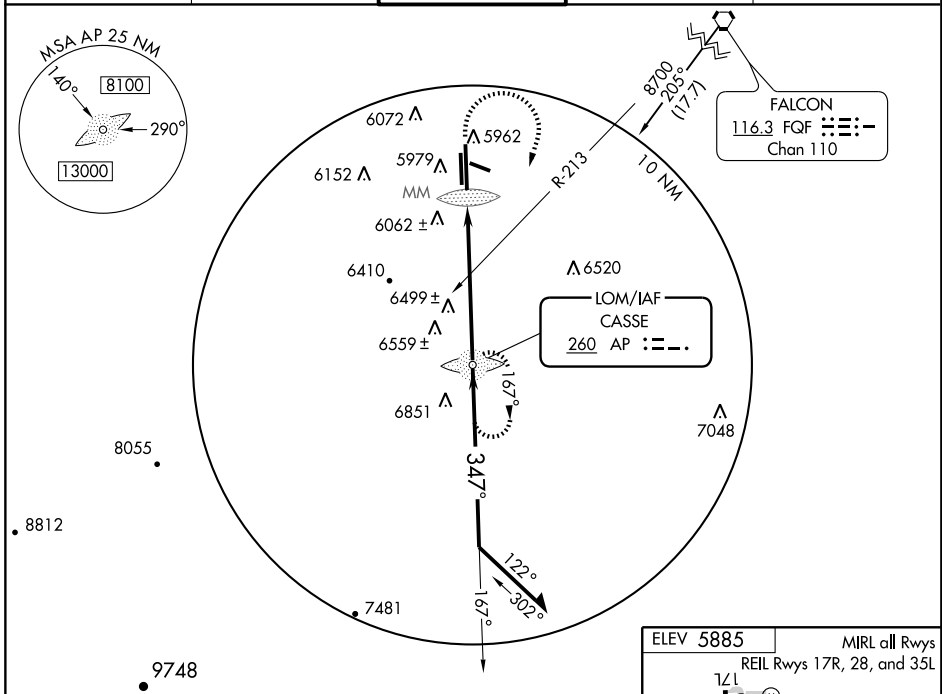
DENVER/ CENTENNIAL (APA)

LOM AP 260	APP CRS 347°	Rwy Idg 10002
		TDZE 5885
		Apt Elev 5885

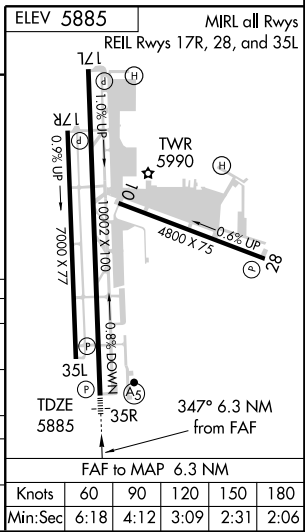
▼ * For inoperative MALSR, increase S-35R Cat A visibility to 1¼, increase S-35R Cat B visibility to 1½.
▲ # For inoperative MALSR, increase S-35R Cat A, B visibility to 1¼. Circling to Rwy 10 not authorized at night.

MALSR

MISSED APPROACH: Climb to 6900, then climbing right turn to 8700 direct AP LOM and hold.

ATIS 120.3	DENVER APP CON 132.75 269.3	CENTENNIAL TOWER 118.9	GND CON 121.8	CLNC DEL 128.6
----------------------	---------------------------------------	----------------------------------	-------------------------	--------------------------



CATEGORY	A	B	C	D
S-35R *	6880-¾ 995 (1000-¾)	6880-1 995 (1000-1)	6880-2½ 995 (1000-2½)	6880-2¾ 995 (1000-2¾)
CIRCLING	6880-1¼ 995 (1000-1¼)	6880-1½ 995 (1000-1½)	6880-3	995 (1000-3)
VOR MINIMUMS				
S-35R #	6780-¾ 895 (900-¾)	895 (900-¾)	6780-2¼ 895 (900-2¼)	6780-2¾ 895 (900-2¾)
CIRCLING	6780-1¼ 895 (900-1¼)	895 (900-1¼)	6780-2¾ 895 (900-2¾)	6780-3 895 (900-3)



SW-1, 19 NOV 2009 to 17 DEC 2009

SW-1, 19 NOV 2009 to 17 DEC 2009

DENVER, COLORADO
 Amdt 10B 09015

39°34'N-104°51'W

DENVER/ CENTENNIAL (APA)
NDB RWY 35R