


# RNAV (GPS) RWY 35R

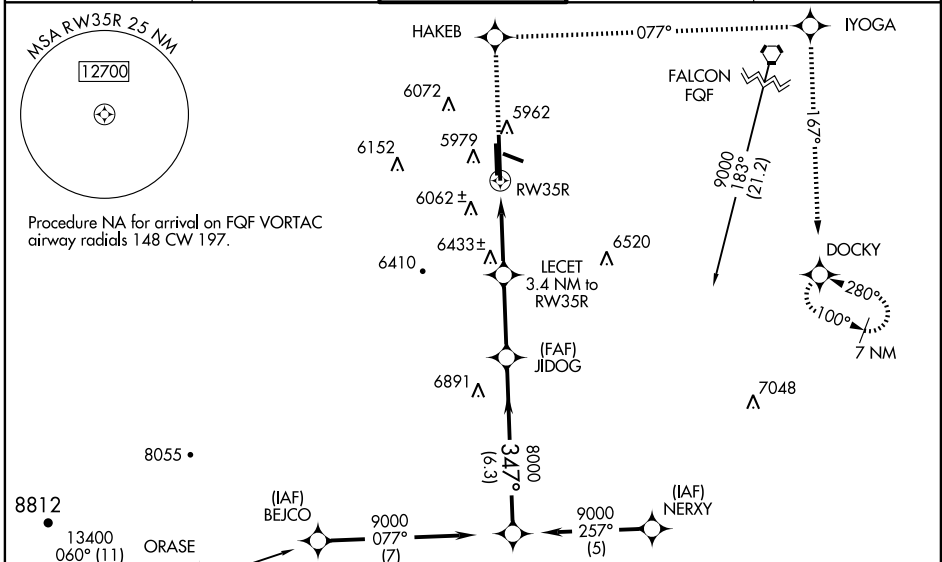
DENVER/ CENTENNIAL (APA)

WAAS CH <b>93508</b> <b>W35A</b>	APP CRS <b>347°</b>	Rwy Idg <b>10002</b> TDZE <b>5885</b> Apt Elev <b>5885</b>
--	------------------------	--

**▼** When local altimeter setting not received, use Denver Intl altimeter setting and increase all DA 108 feet and all MDA 120 feet; increase LNAV Cat C/D visibility ¼ mile and circling Cats A/C/D visibility ¼ mile. For inoperative MALSR increase LPV all Cats visibility to 1¼ mile. For inoperative MALSR increase LNAV Cat A visibility to 1. For uncompensated Baro-VNAV systems, LNAV/VNAV NA below -26°C (-14°F) or above 37°C (98°F). Inoperative table does not apply to LPV and LNAV/VNAV. Visibility reduction by helicopters NA. VDP and Baro-VNAV NA when using Denver Intl altimeter setting. Circling to Rwy 10 NA at night. DME/DME RNP-0.3 NA.

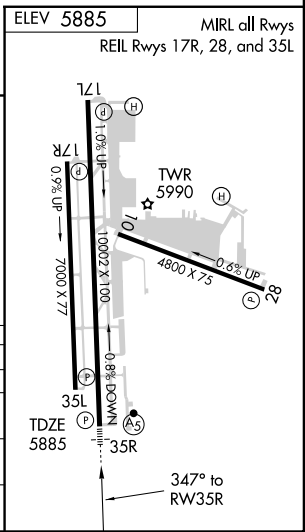
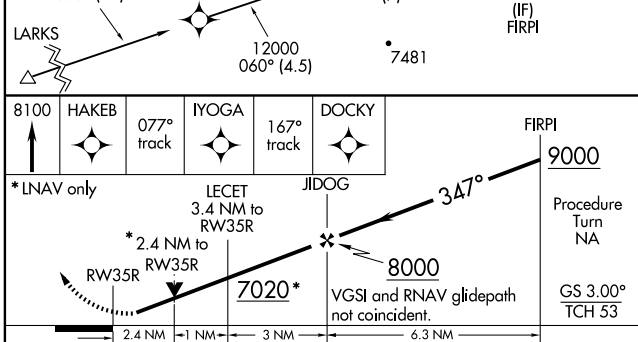
**MALSR**  
  
**MISSED APPROACH:**  
 Climb to 8100 direct HAKEB and via 077° track to IYOGA and via 167° track to DOCKY and hold.

ATIS <b>120.3</b>	DENVER APP CON <b>132.75 269.3</b>	<b>CENTENNIAL TOWER</b> <b>118.9</b>	GND CON <b>121.8</b>	CLNC DEL <b>128.6</b>
----------------------	---------------------------------------	---	-------------------------	--------------------------



SW-1, 11 MAR 2010 to 08 APR 2010

SW-1, 11 MAR 2010 to 08 APR 2010



8100	HAKEB	077° track	IYOGA	167° track	DOCKY	FIRPI	9000
*LNAV only		LE CET 3.4 NM to RW35R		JIDOG		Procedure Turn NA	
RW35R		2.4 NM to RW35R		8000		GS 3.00° TCH 53	
2.4 NM		1 NM		3 NM		6.3 NM	
CATEGORY	A	B	C	D			
LPV DA	6140-3/4		255 (300-3/4)				
LNAV/VNAV DA	6925-4		1040 (1100-4)				
LNAV MDA	6700-3/4	815 (900-3/4)	6700-2	815 (900-2)	6700-2 1/4	815 (900-2 1/4)	
CIRCLING	6700-1	6700-1 1/4	6700-2 1/2	815 (900-2 1/2)	6700-2 3/4	815 (900-2 3/4)	