

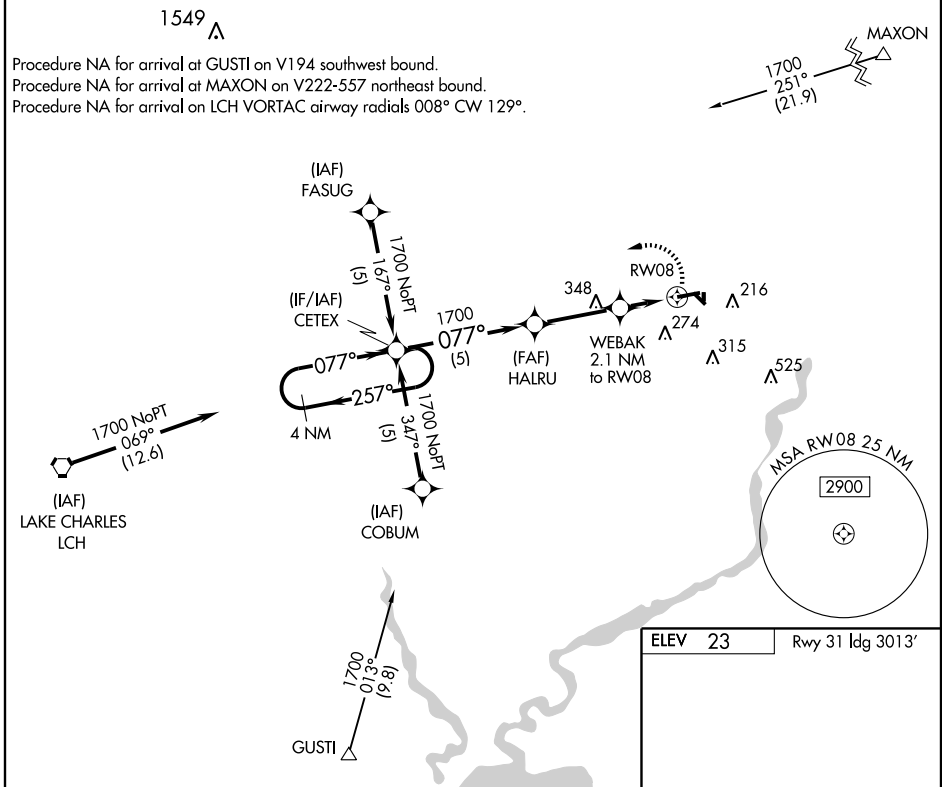
RNAV (GPS) RWY 8

JENNINGS (3R7)

APP CRS	Rwy Idg	5002
077°	TDZE	17
	Apt Elev	23

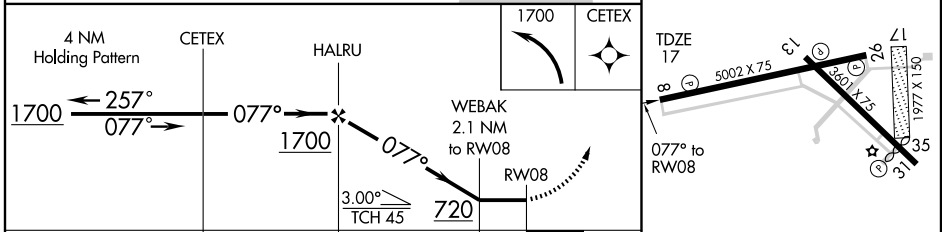
▽ Use Lake Charles Rgnl altimeter setting.
△ NA GPS or RNP-0.3 required. DME/DME RNP-0.3 NA. MISSED APPROACH: Climbing left turn to 1700 direct CETEX WP and hold.

LAKE CHARLES APP CON * **119.8 282.3** UNICOM **122.8** (CTAF) **0**



SC-4, 19 NOV 2009 to 17 DEC 2009

SC-4, 19 NOV 2009 to 17 DEC 2009



CATEGORY	A	B	C	D
LNVA MDA	460-1 443 (500-1)	460-1¼ 443 (500-1¼)	460-1¼ 443 (500-1¼)	NA
CIRCLING	640-1 617 (700-1)	660-1¾ 637 (700-1¾)	660-1¾ 637 (700-1¾)	NA

ELEV 23 Rwy 31 Idg 3013'

REIL Rwy 8, 26, 13, and 31 **0**
 MIRL Rwy 8-26 and 13-31 **0**