

RNAV (GPS) RWY 17

AURORA STATE (UAO)

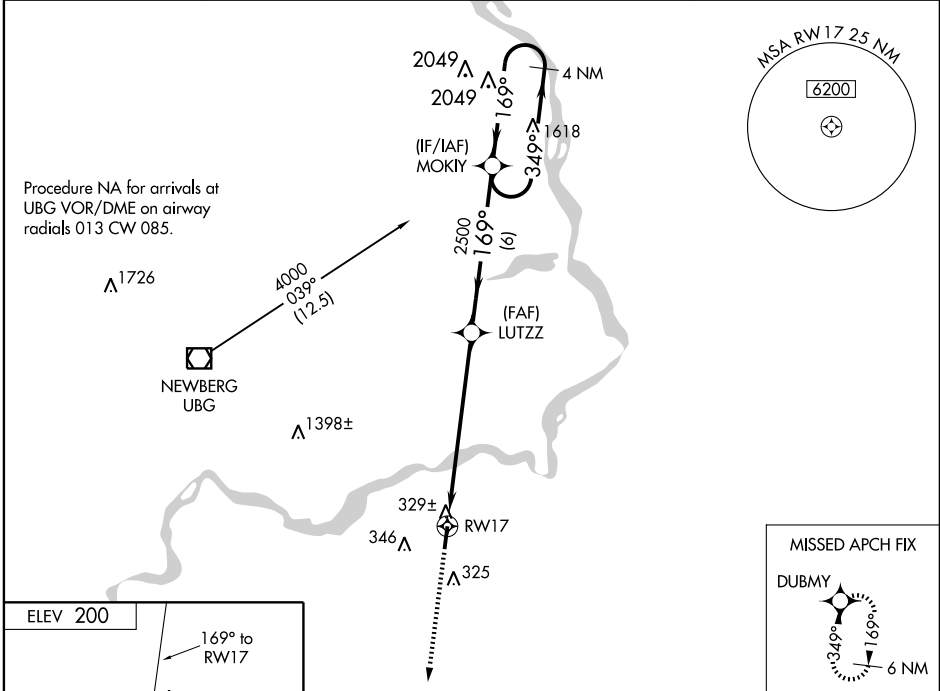
WAAS CH 70308 W17A	APP CRS 169°	Rwy Idg TDZE 200 Apt Elev 200	5004
--	------------------------	---	-------------

▽ DME/DME RNP-0.3 NA. When local altimeter setting not received, use Mc Minville Muni altimeter setting and increase all DA 42 feet and all MDA 60 feet; increase LPV, LNAV/VNAV visibilities all Cats. ¼ mile, increase LNAV visibility Cats. A/C/D ¼ mile, increase Circling visibilities Cats. A/C/D ¼ mile. For uncompensated Baro-VNAV systems, LNAV/VNAV NA below -15°C (5°F) or above 49°C (120°F). Inoperative table does not apply. Visibility reduction by helicopters NA.

ODALS

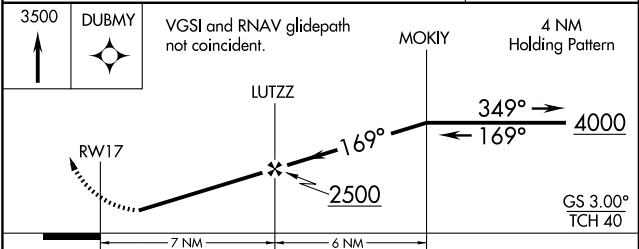
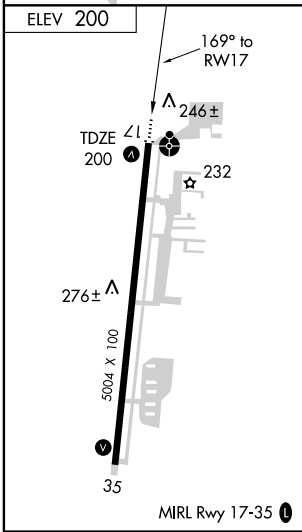
MISSED APPROACH:
Climb to 3500 direct DUBMY and hold, continue climb-in-hold to 3500.

ASOS 118.525	PORTLAND APP CON 126.0 284.6	CLNC DEL 119.95	UNICOM 122.7 (CTAF) 0
------------------------	--	---------------------------	---------------------------------



NW-1, 19 NOV 2009 to 17 DEC 2009

NW-1, 19 NOV 2009 to 17 DEC 2009



CATEGORY	A	B	C	D
LPV DA		550-1¼	350 (400-1¼)	
LNAV/VNAV DA		580-1¼	380 (400-1¼)	
LNAV MDA	1060-1 860 (900-1)	1060-1¼ 860 (900-1¼)	1060-2½ 860 (900-2½)	1060-2¾ 860 (900-2¾)
CIRCLING	1060-1 860 (900-1)	1060-1¼ 860 (900-1¼)	1060-2½ 860 (900-2½)	1060-2¾ 860 (900-2¾)