

RNAV (GPS) RWY 35

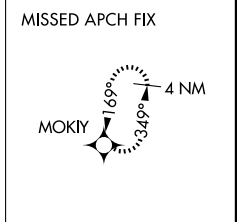
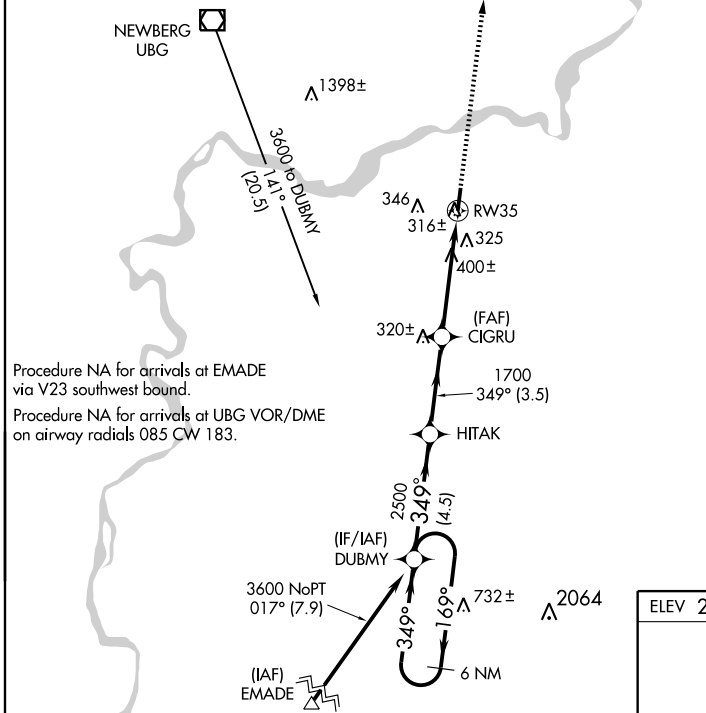
AURORA STATE (UAO)

WAAS CH 77508 W35A	APP CRS 349°	Rwy Idg 5004 TDZE 199 Apt Elev 200
---------------------------------	------------------------	---

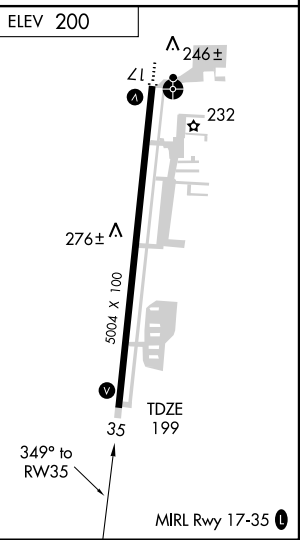
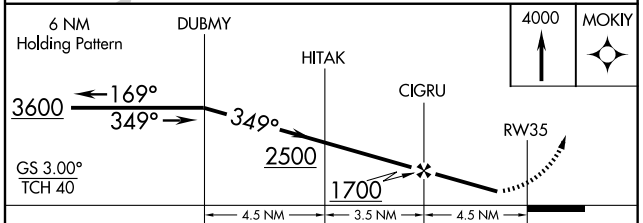
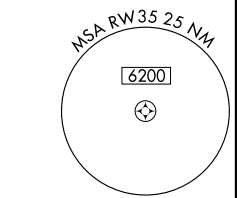
⚠ DME/DME RNP-0.3 NA. For uncompensated Baro-VNAV systems, LNAV/VNAV NA below -15°C (5°F) or above 48°C (118°F). When local altimeter setting not received, use Mc Minnville Muni altimeter setting and increase all DA 42 feet and MDA 60 feet; increase LPV, LNAV/VNAV visibilities ¼ mile all Cats, increase LNAV Cat D visibility to 1½. Visibility reduction by helicopters NA. Baro-VNAV NA when using Mc Minnville Muni altimeter setting.

MISSED APPROACH: Climb to 4000 direct MOKIY and hold, continue climb-in-hold to 4000.

ASOS 118.525	PORTLAND APP CON 126.0 284.6	CINC DEL 119.95	UNICOM 122.7 (CTAF) 0
------------------------	--	---------------------------	--



Procedure NA for arrivals at EMAD via V23 southwest bound.
Procedure NA for arrivals at UBG VOR/DME on airway radials 085 CW 183.



CATEGORY	A				B		C		D	
LPV DA	500-1 301 (300-1)									
LNAV/VNAV DA	604-1½ 405 (500-1½)									
LNAV MDA	700-1 501 (500-1)				700-1½ 501 (500-1½)					
CIRCLING	700-1 500 (500-1)				700-1½ 500 (500-1½)				760-2 560 (600-2)	

NW-1, 19 NOV 2009 to 17 DEC 2009

NW-1, 19 NOV 2009 to 17 DEC 2009