

PORT CLINTON, OHIO

AL-5727 (FAA)

VOR/DME-A

PORT CLINTON/CARL R. KELLER FIELD (PCW)

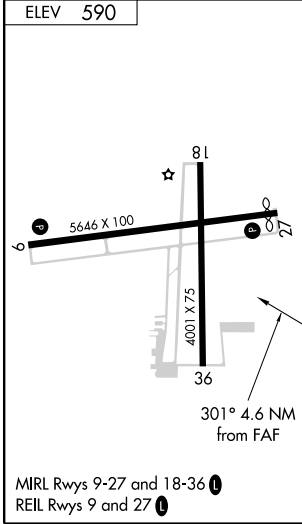
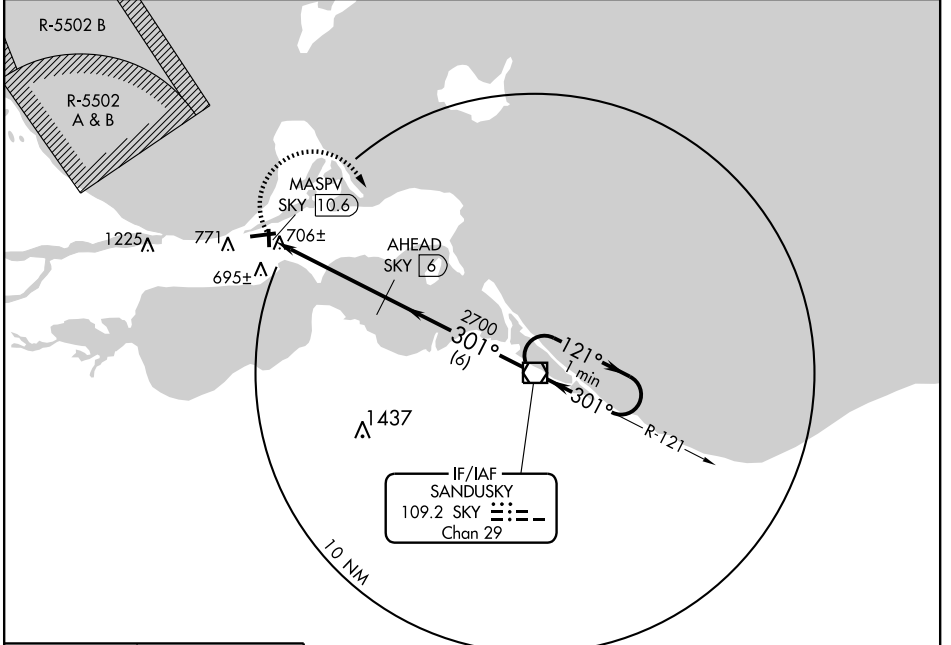
VOR/DME SKY 109.2 Chan 29	APP CRS 301°	Rwy Idg TDZE Apt Elev	N/A N/A 590
--	------------------------	-----------------------------	--

⚠ When local altimeter setting not received, use Metcalf Field altimeter setting and increase all MDA 80 feet, and visibility Cat C ¼ mile.

⚠ NA

MISSED APPROACH: Climbing right turn to 3000 direct SKY VOR/DME and hold.

AWOS-3 118.775	CLEVELAND APP CON 126.35 354.025	UNICOM 122.8 (CTAF) ①
--------------------------	--	---------------------------------



NoPT for arrival at SKY VOR/DME on airway radials 105 CW 179.

MSA SKY 25 NM
2500

3000 SKY 109.2	One Minute Holding Pattern		
MASPV SKY 10.6	AHEAD SKY 6	VOR/DME	
2700	301°	121° →	← 301° 3000
4.6 NM	6 NM		
CATEGORY	A	B	C
CIRCLING	1140-1	550 (600-1)	1140-1½ 550 (600-1½)
			D
			1140-2 550 (600-2)

PORT CLINTON, OHIO
Amdt 9 09211

PORT CLINTON/CARL R. KELLER FIELD (PCW)
VOR/DME-A

41°31'N - 82°52'W

EC-2, 11 MAR 2010 to 08 APR 2010

EC-2, 11 MAR 2010 to 08 APR 2010