

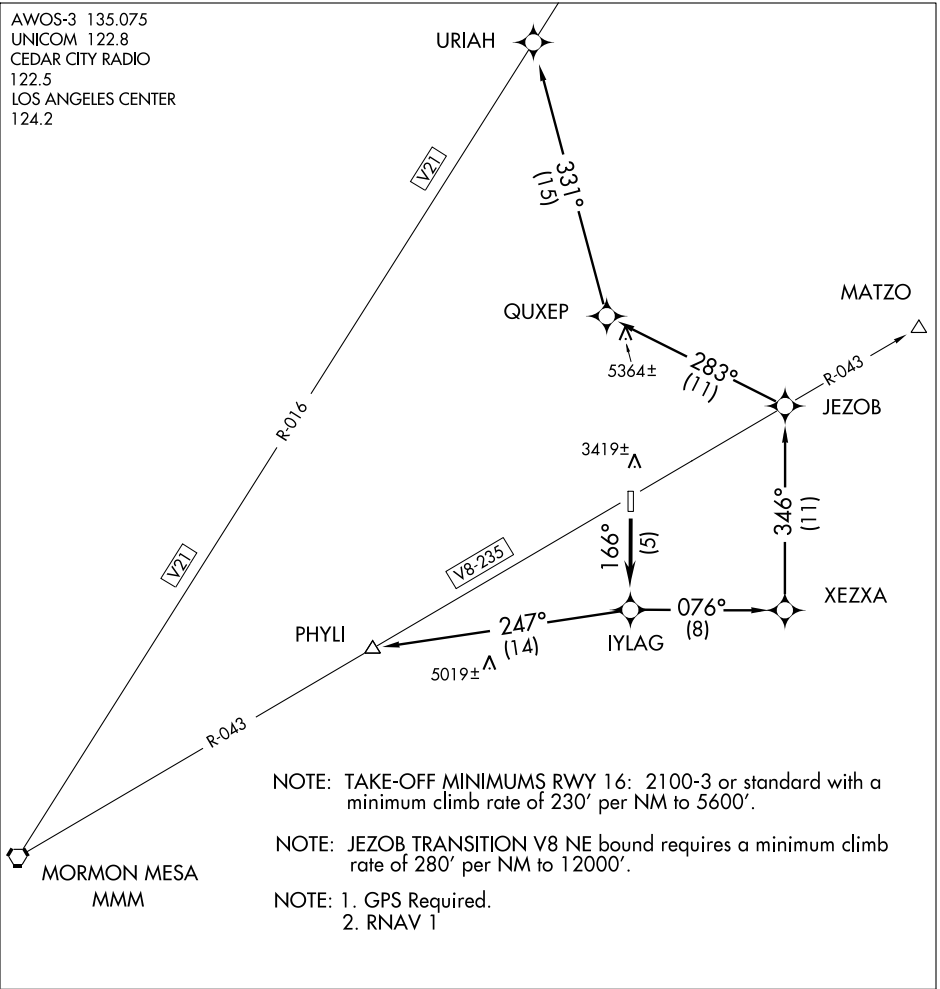
(IYLAG1.IYLAG) 07186

SL-5742 (FAA)

ST. GEORGE MUNI (SGU)  
ST. GEORGE, UTAH

# IYLAG ONE DEPARTURE (RNAV)

AWOS-3 135.075  
UNICOM 122.8  
CEDAR CITY RADIO  
122.5  
LOS ANGELES CENTER  
124.2



NOTE: TAKE-OFF MINIMUMS RWY 16: 2100-3 or standard with a minimum climb rate of 230' per NM to 5600'.

NOTE: JEZOB TRANSITION V8 NE bound requires a minimum climb rate of 280' per NM to 12000'.

- NOTE: 1. GPS Required.
- 2. RNAV 1

## DEPARTURE ROUTE DESCRIPTION

TAKE-OFF RUNWAY 16: Climb to 12000 (or assigned altitude) via course 166° to IYLAG WP then via assigned transition/route.

TAKE-OFF RUNWAY 34: Not authorized.

JEZOB TRANSITION (IYLAG1.JEZOB): From over IYLAG WP via course 076° to XEZXA WP, then via course 346° to JEZOB WP.

PHYLI TRANSITION (IYLAG1.PHYLI)

URIAH TRANSITION (IYLAG1.URIAH)

SW-4, 11 MAR 2010 to 08 APR 2010

SW-4, 11 MAR 2010 to 08 APR 2010

IYLAG ONE DEPARTURE (RNAV)  
(IYLAG1.IYLAG) 07186

ST. GEORGE, UTAH  
ST. GEORGE MUNI (SGU)