

RNAV (GPS) RWY 22

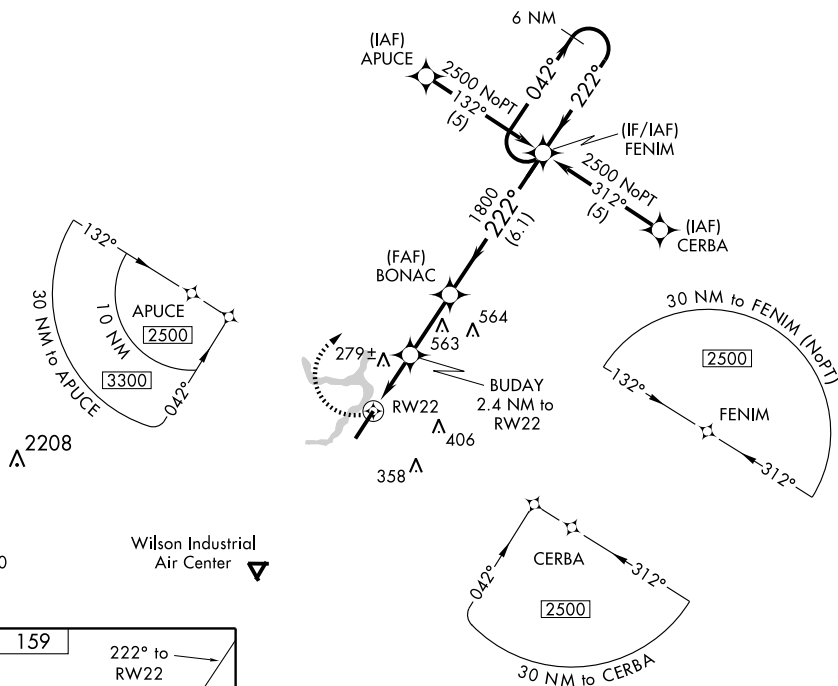
ROCKY MOUNT-WILSON RGNL (R.WI)

APP CRS 222°	Rwy Idg 6900
	TDZE 154
	Apt Elev 159

▼ DME/DME RNP-0.3 NA. When local altimeter setting not received, use Goldsboro-Wayne Muni altimeter setting and increase all MDA 60 feet, and LNAV Cat. D visibility ¼ mile. VDP NA when using Goldsboro-Wayne Muni altimeter setting.

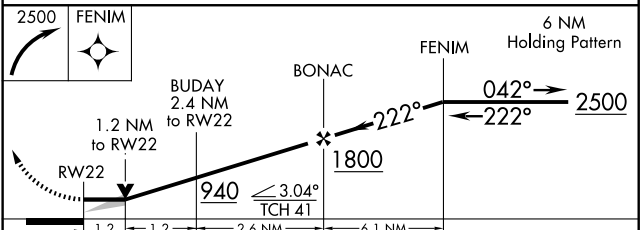
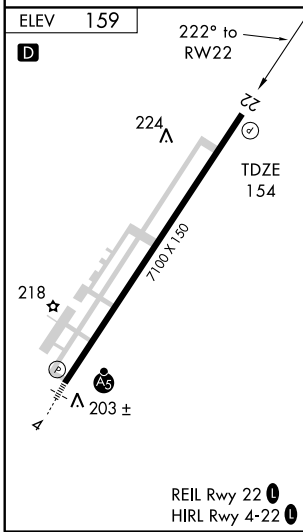
MISSED APPROACH: Climbing right turn to 2500 direct FENIM and hold.

ASOS 118.875	WASHINGTON CENTER 118.475 279.65	CLNC DEL 122.3	UNICOM 123.05 (CTAF) 0
------------------------	--	--------------------------	----------------------------------



SE-2, 11 MAR 2010 to 08 APR 2010

SE-2, 11 MAR 2010 to 08 APR 2010



CATEGORY	A	B	C	D
LNAV MDA	560-1	406 (500-1)	560-1¼	406 (500-1¼)
CIRCLING	600-1 441 (500-1)	620-1 461 (500-1)	620-1½ 461 (500-1½)	720-2 561 (600-2)