


RNAV (GPS) RWY 4

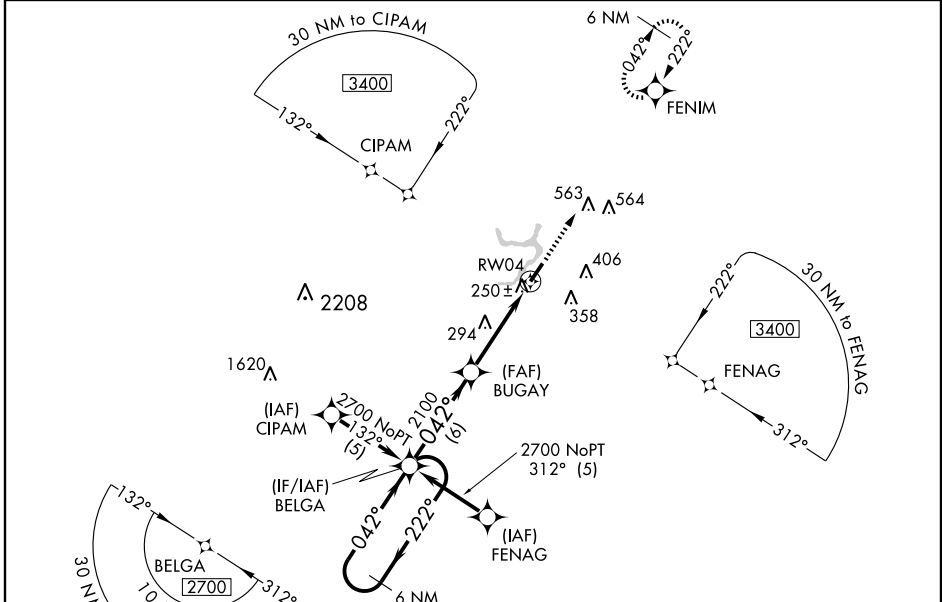
ROCKY MOUNT-WILSON RGNL (RWI)

WAAS CH 56513 W04A	APP CRS 042°	Rwy Idg TDZE Apt Elev	7100 159 159
--	------------------------	-----------------------------	---

⚠ For uncompensated Baro-VNAV systems, LNAV/VNAV NA below -15°C (5°F) or above 48°C (118°F). DME/DME RNP-0.3 NA. When local altimeter setting not received, use Goldsboro-Wayne Muni altimeter setting and increase all DA 59 feet, all MDA 60 feet, increase LNAV/VNAV all Cats. visibility 1/4 mile. For inoperative MALSR, increase LNAV Cat. D visibility to 1/4 mile. Baro-VNAV and VDP NA when using Goldsboro-Wayne Muni altimeter setting.

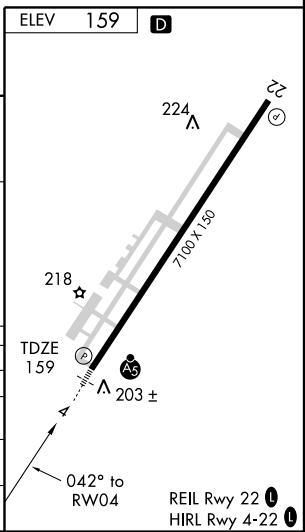
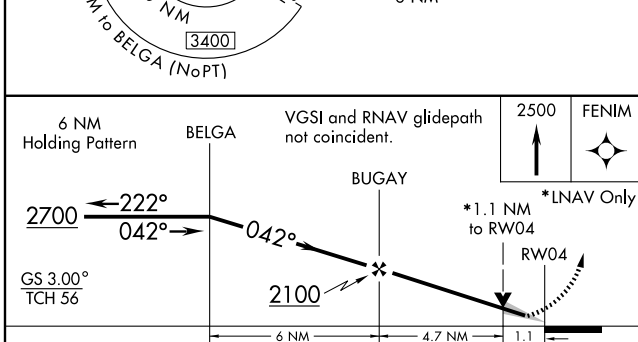
MALSR
 **MISSED APPROACH:**
 Climb to 2500 direct FENIM and hold.

ASOS 118.875	WASHINGTON CENTER 118.475 279.65	CLNC DEL 122.3	UNICOM 123.05 (CTAF) 0
------------------------	--	--------------------------	----------------------------------



SE-2, 11 MAR 2010 to 08 APR 2010

SE-2, 11 MAR 2010 to 08 APR 2010



CATEGORY	A	B	C	D
LPV DA	359-1/2		200 (200-1/2)	
LNAV/VNAV DA	521-3/4		362 (400-3/4)	
LNAV MDA	560-1/2	401 (500-1/2)	560-3/4	560-1
	441 (500-1)	461 (500-1)	401 (500-3/4)	401 (500-1)
CIRCLING	600-1	620-1	620-1 1/2	720-2
	441 (500-1)	461 (500-1)	461 (500-1 1/2)	561 (600-2)