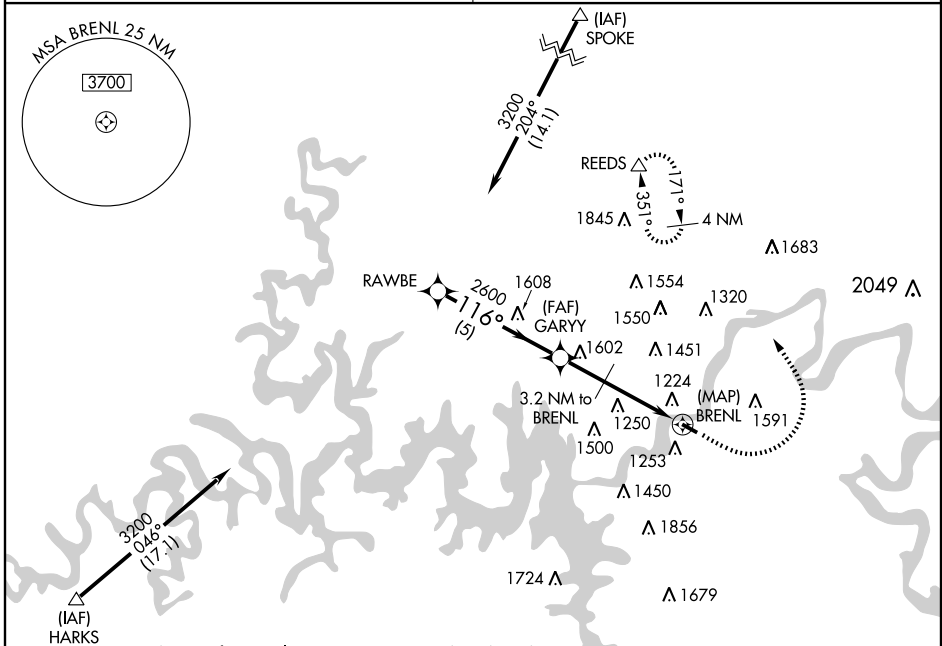


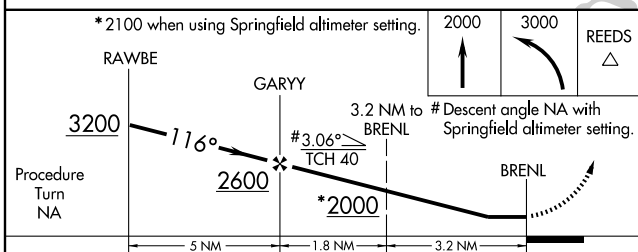
APP CRS 116°	Rwy Idg 3625
	TDZE 938
	Apt Elev 938

<p>▽ Obtain local altimeter on CTAF; when not received use Springfield altimeter setting.</p> <p>△NA</p>	<p>MISSED APPROACH: Climb to 2000 then climbing left turn to 3000 direct REEDS WP and hold.</p>
--	---

<p>SPRINGFIELD APP CON 126.35</p>	<p>UNICOM 122.7 (CTAF) 0</p>
--	---



Procedure NA for arrival at HARKS via V72 southwestbound, and for arrival at SPOKE via V71 northbound.



ELEV 938
<p>116° to BRENL</p> <p>TDZE 938</p> <p>3738 X 100</p>

<p>*2100 when using Springfield altimeter setting.</p> <p>2000</p> <p>3000</p> <p>REEDS △</p>

<p>Procedure Turn NA</p>

CATEGORY	A	B	C	D
S-11	1520-1	582 (600-1)	1520-1½ 582 (600-1½)	NA
CIRCLING	1600-1	662 (700-1)	1600-1¾ 662 (700-1¾)	NA
SPRINGFIELD ALTIMETER SETTING MINIMUMS				
S-11	1660-1	722 (800-1)	1660-2 722 (800-2)	NA
CIRCLING	1740-1 802 (900-1)	1740-1¼ 802 (900-1¼)	1740-2¼ 802 (900-2¼)	NA

REIL Rwys 11 and 29 0
MIRL Rwy 11-29 0

NC-3, 11 MAR 2010 to 08 APR 2010

NC-3, 11 MAR 2010 to 08 APR 2010