

# RNAV (GPS) RWY 18

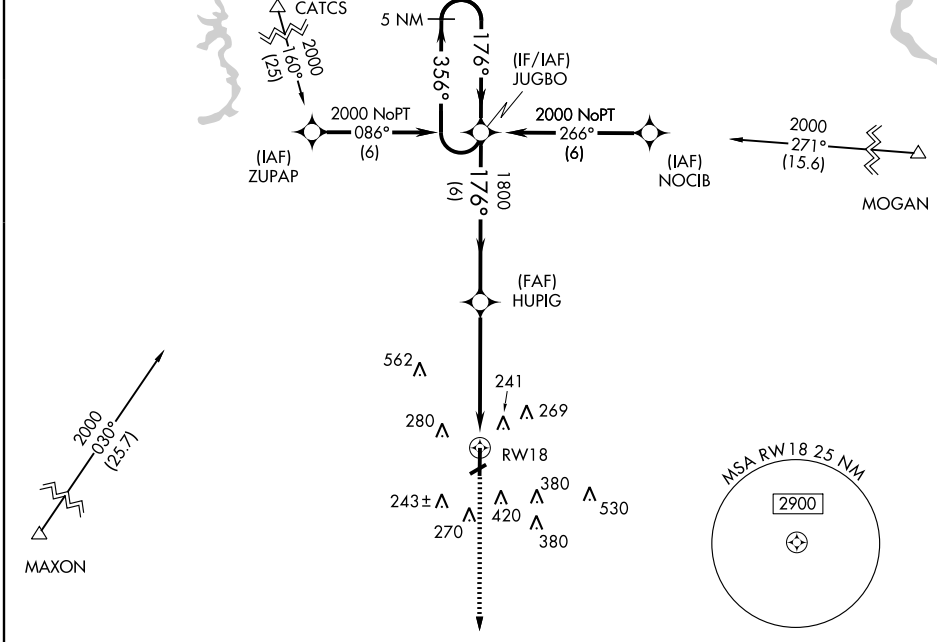
OPELOUSAS/ST. LANDRY PARISH-AHART FIELD (OPL)

APP CRS	Rwy Idg	<b>5849</b>
<b>176°</b>	TDZE	<b>71</b>
	Apt Elev	<b>75</b>

**NA** DME/DME RNP-0.3 NA. If local altimeter setting not received, use Lafayette Rgnl altimeter setting and increase all MDAs 60 feet. VDP NA when using Lafayette Rgnl altimeter setting.

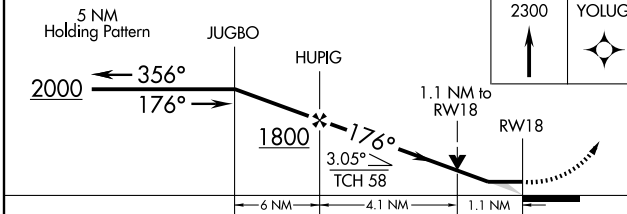
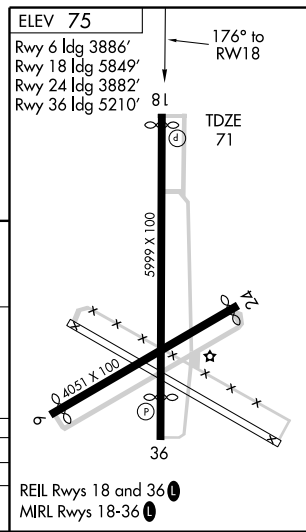
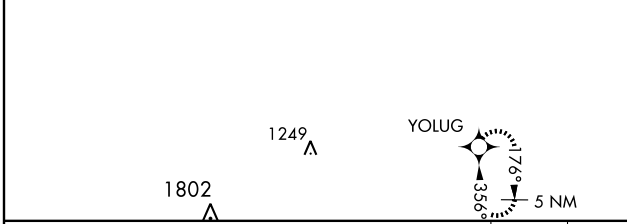
**MISSED APPROACH:** Climb to 2300 direct YOLUG and hold.

LAFAYETTE APP CON *	GCO	UNICOM
<b>128.7 268.7</b>	<b>135.075</b>	<b>123.0 (CTAF) 0</b>



SC-4, 11 MAR 2010 to 08 APR 2010

SC-4, 11 MAR 2010 to 08 APR 2010



CATEGORY	A	B	C	D
RNAV MDA	480-1	409 (500-1)	480-1¼	409 (500-1¼)
CIRCLING	780-1	705 (800-1)	780-2 705 (800-2)	780-2¼ 705 (800-2¼)

# RNAV (GPS) RWY 18

REIL Rwy 18 and 36  
MIRL Rwy 18-36