

RNAV (GPS) RWY 36

OPELOUSAS/ST. LANDRY PARISH-AHART FIELD (OPL)

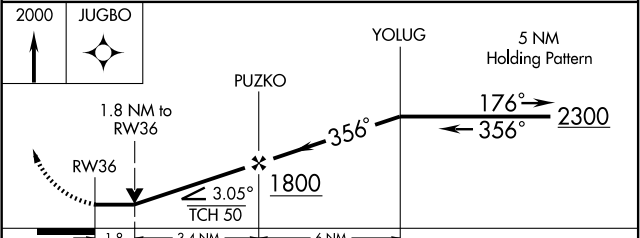
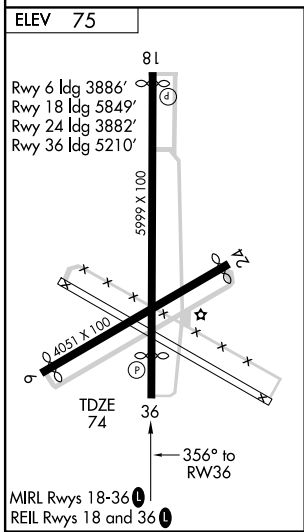
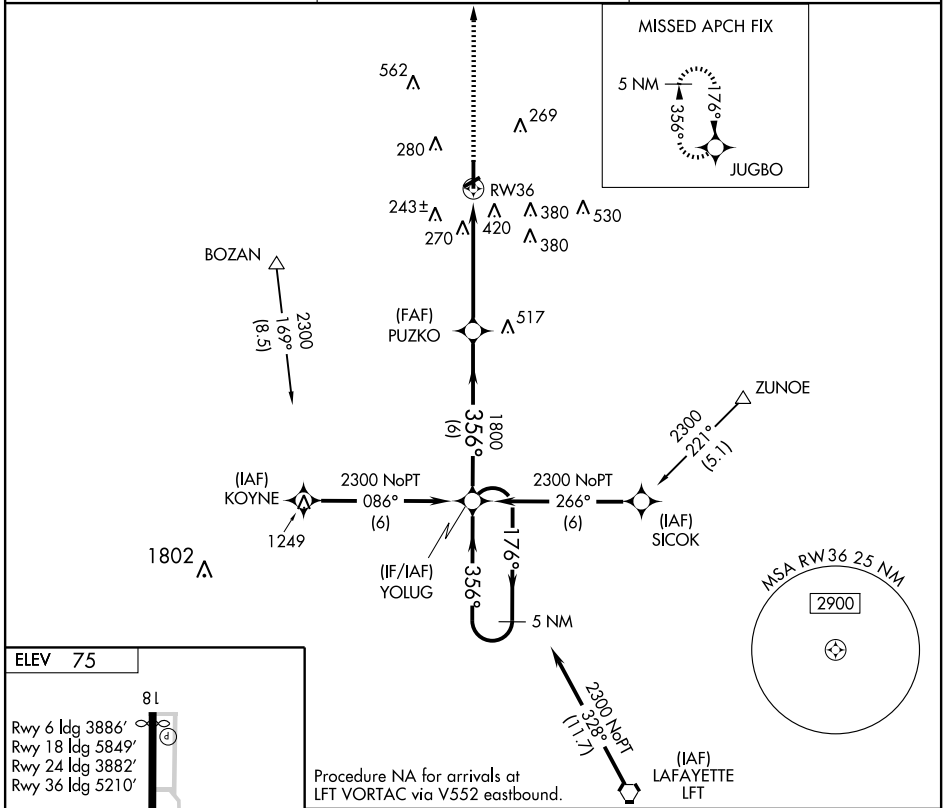
APP CRS 356°	Rwy ldg 5210
	TDZE 74
	Apt Elev 75

▽ DME/DME RNP-0.3 NA. Visibility reduction by helicopters NA. If local altimeter setting not received, use Lafayette Rgnl altimeter setting and increase all MDAs 60 feet. VDP NA when using Lafayette Rgnl altimeter setting.

▲ NA

MISSED APPROACH: Climb to 2000 direct JUGBO and hold.

LAFAYETTE APP CON* 128.7 268.7	GCO 135.075	UNICOM 123.0 (CTAF)
--	-----------------------	-------------------------------



CATEGORY	A	B	C	D
LNNAV MDA	700-1	626 (700-1)	700-1¾ 626 (700-1¾)	700-2 626 (700-2)
CIRCLING	780-1	705 (800-1)	780-2 705 (800-2)	780-2¼ 705 (800-2¼)

SC-4, 11 MAR 2010 to 08 APR 2010

SC-4, 11 MAR 2010 to 08 APR 2010