

VOR/DME RWY 36

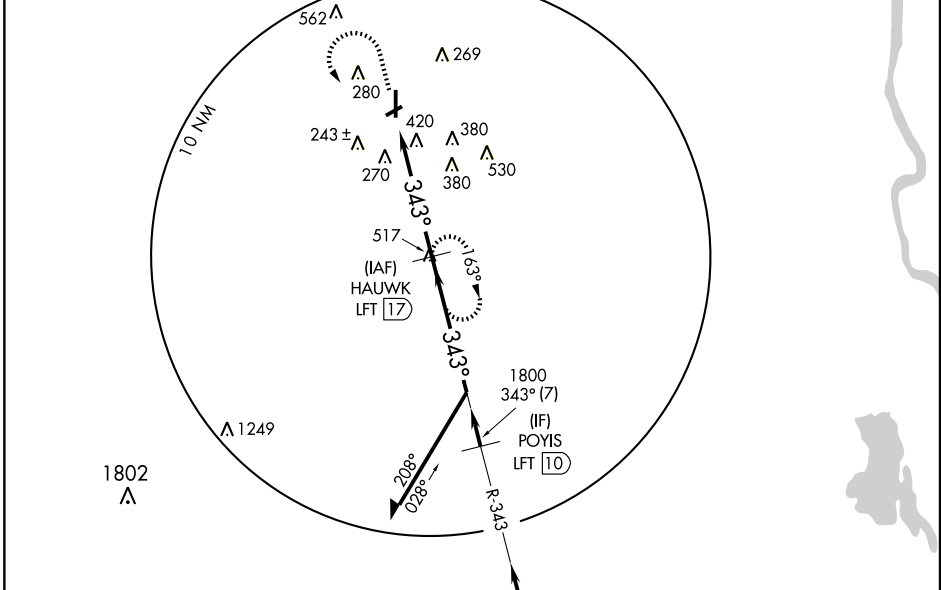
OPELOUSAS/ST. LANDRY PARISH-AHART FIELD (OPL)

VORTAC LFT 109.8 Chan 35	APP CRS 343°	Rwy ldg TDZE Apt Elev	5210 74 75
---------------------------------------	------------------------	-----------------------------	---------------------------------------

▼ If local altimeter setting not received, use Lafayette Rgnl altimeter setting and increase all MDAs 60 feet. Visibility reduction by helicopters NA.

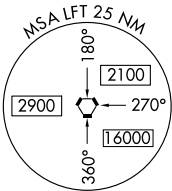
MISSED APPROACH: Climb to 1000 then climbing left turn to 2100 via heading 120° and LFT R-343 to HAUWK 17 DME and hold.

LAFAYETTE APP CON ★ 128.7 268.7	GCO 135.075	UNICOM 123.0 (CTAF) 0
---	-----------------------	---------------------------------



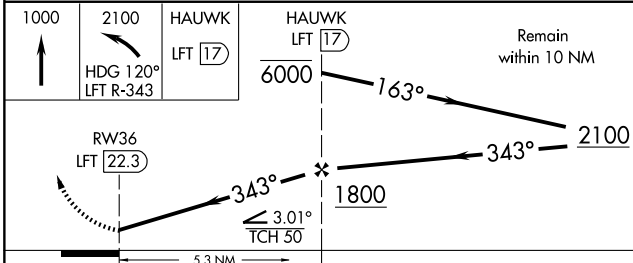
SC-4, 19 NOV 2009 to 17 DEC 2009

SC-4, 19 NOV 2009 to 17 DEC 2009

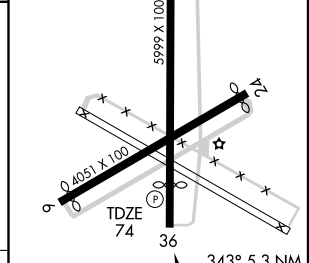


IAF LAFAYETTE
109.8 LFT
Chan 35

Procedure NA for arrivals at LFT VORTAC via V559 southbound.



ELEV 75	81
Rwy 6 ldg 3886'	
Rwy 18 ldg 5849'	
Rwy 24 ldg 3882'	
Rwy 36 ldg 5210'	



CATEGORY	A	B	C	D
S-36	720-1 646 (700-1)	720-1¼ 646 (700-1¼)	720-1¾ 646 (700-1¾)	720-2 646 (700-2)
CIRCLING	780-1 705 (800-1)	780-1¼ 705 (800-1¼)	780-2 705 (800-2)	780-2¼ 705 (800-2¼)

MRL Rwy 18-36	0				
REIL Rwy 18 and 36	0				
Knots	60	90	120	150	180
Min:Sec					

VOR/DME RWY 36