

# RNAV (GPS) RWY 18

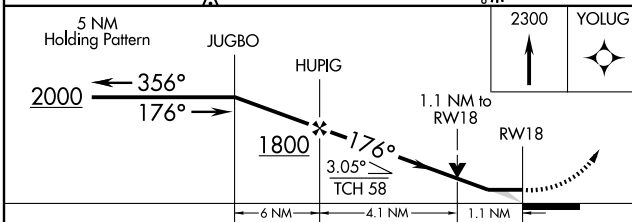
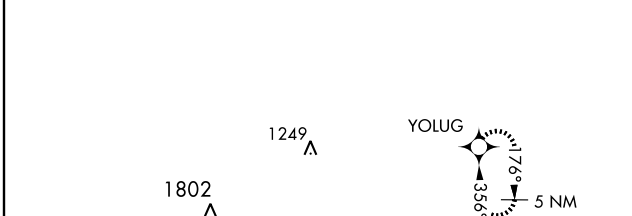
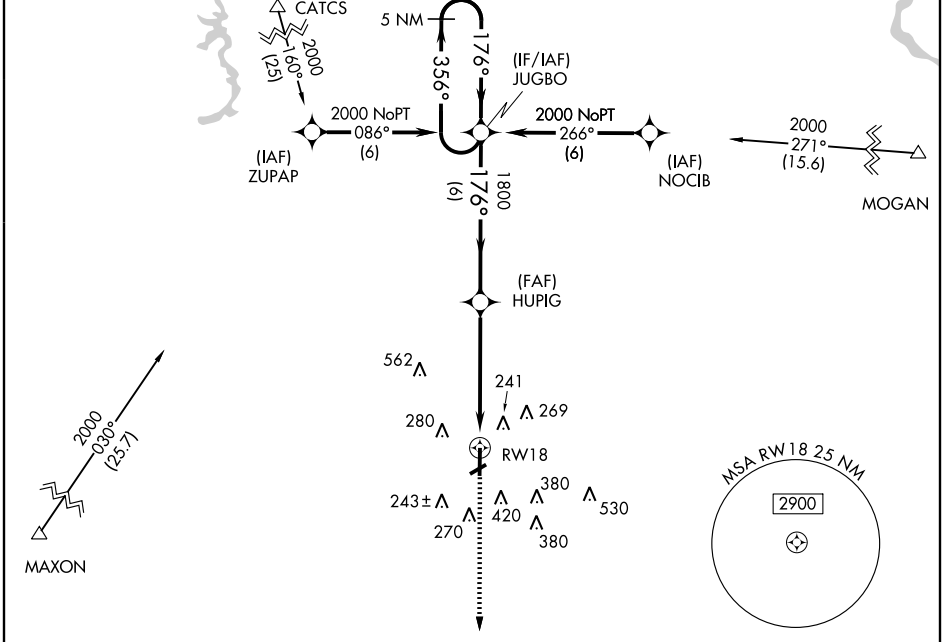
OPELOUSAS/ST. LANDRY PARISH-AHART FIELD (OPL)

|             |          |             |
|-------------|----------|-------------|
| APP CRS     | Rwy Idg  | <b>5849</b> |
| <b>176°</b> | TDZE     | <b>71</b>   |
|             | Apt Elev | <b>75</b>   |

**▽** DME/DME RNP-0.3 NA. If local altimeter setting not received, use Lafayette Rgnl altimeter setting and increase all MDAs 60 feet. **△** NA

**MISSED APPROACH:** Climb to 2300 direct YOLUG and hold.

|                     |                |                       |
|---------------------|----------------|-----------------------|
| LAFAYETTE APP CON * | GCO            | UNICOM                |
| <b>128.7 268.7</b>  | <b>135.075</b> | <b>123.0 (CTAF) 0</b> |



**ELEV 75**

Rwy 6 ldg 3886'  
 Rwy 18 ldg 5849'  
 Rwy 24 ldg 3882'  
 Rwy 36 ldg 5210'

176° to RWY 18

TDZE 71

81

001 X 6669

0 4051 X 100

36

REIL Rwy 18 and 36 **0**  
 MIRL Rwy 18-36 **0**

| CATEGORY | A     | B           | C                    | D                            |
|----------|-------|-------------|----------------------|------------------------------|
| LNVA MDA | 480-1 | 409 (500-1) | 480-1 1/4            | 409 (500-1 1/4)              |
| CIRCLING | 780-1 | 705 (800-1) | 780-2<br>705 (800-2) | 780-2 1/4<br>705 (800-2 1/4) |

# RNAV (GPS) RWY 18

SC-4, 19 NOV 2009 to 17 DEC 2009

SC-4, 19 NOV 2009 to 17 DEC 2009