

OXFORD, CONNECTICUT

AL-5785 (FAA)

LOC/DME I-OXC 109.55 Chan 32 (Y)	APP CRS 005°	Rwy ldg 5000
		TDZE 721
		Apt Elev 726

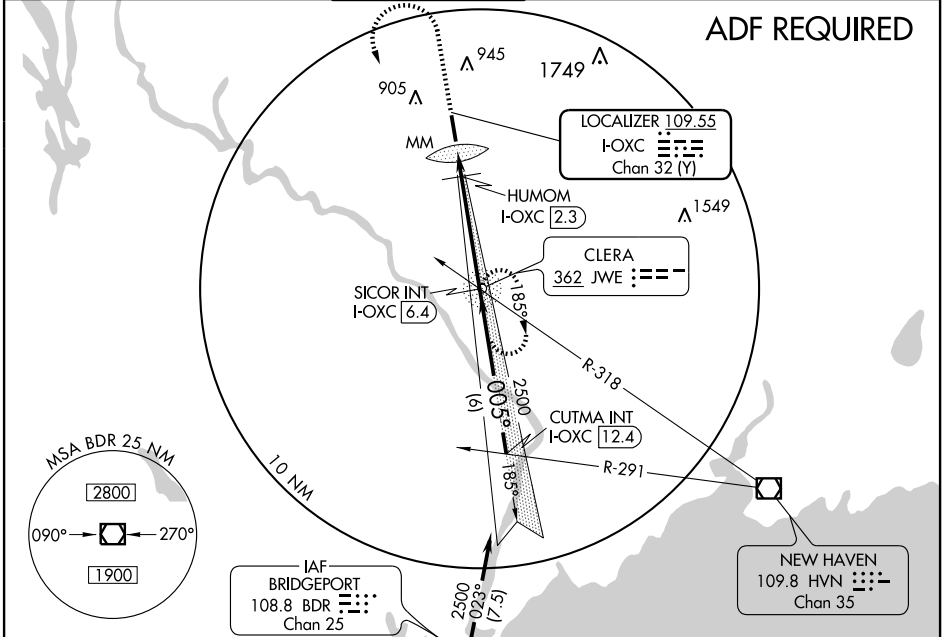
ILS or LOC RWY 36

OXFORD / WATERBURY-OXFORD (OXC)

NA

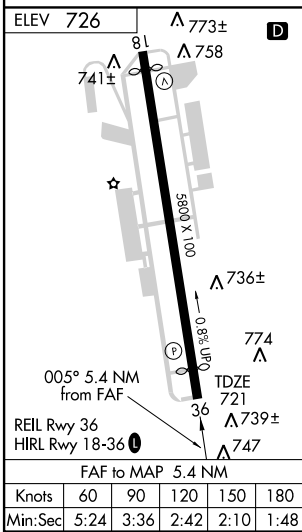
MISSED APPROACH: Climb to 1200, then climbing left turn to 2500 direct CLERA NDB and hold.

ATIS 132.975	NEW YORK APP CON 124.075 343.65	OXFORD TOWER ★ 118.475 (CTAF) 1	GND CON 121.65	CLNC DEL 121.65	UNICOM 122.7
------------------------	---	--	--------------------------	---------------------------	------------------------



NE-1, 19 NOV 2009 to 17 DEC 2009

NE-1, 19 NOV 2009 to 17 DEC 2009



1200	2500	JWE 362	SICOR INT I-OXC 6.4	CUTMA INT I-OXC 12.4
↑	↶			Procedure Turn NA
		HUMOM I-OXC 2.3	2500	2500
		I-OXC MM	005°	005°
			1180*	*LOC only
				GS unusable below 965' MSL.
				GS 3.00° TCH 56
CATEGORY	A	B	C	D
S-ILS 36	971-1 250 (300-1)			
S-LOC 36	1180-1	459 (500-1)	1180-1¼ 459 (500-1¼)	1180-1½ 459 (500-1½)
CIRCLING	1280-1	554 (600-1)	1280-1½ 554 (600-½)	1320-2 594 (600-2)
HUMOM FIX MINIMUMS				
S-LOC 36	1040-1 319 (400-1)			
CIRCLING	1280-1	554 (600-1)	1280-1½ 554 (600-½)	1320-2 594 (600-2)

OXFORD, CONNECTICUT
Amdt 13 09015

41°29'N - 73°08'W

ILS or LOC RWY 36

OXFORD / WATERBURY-OXFORD (OXC)