

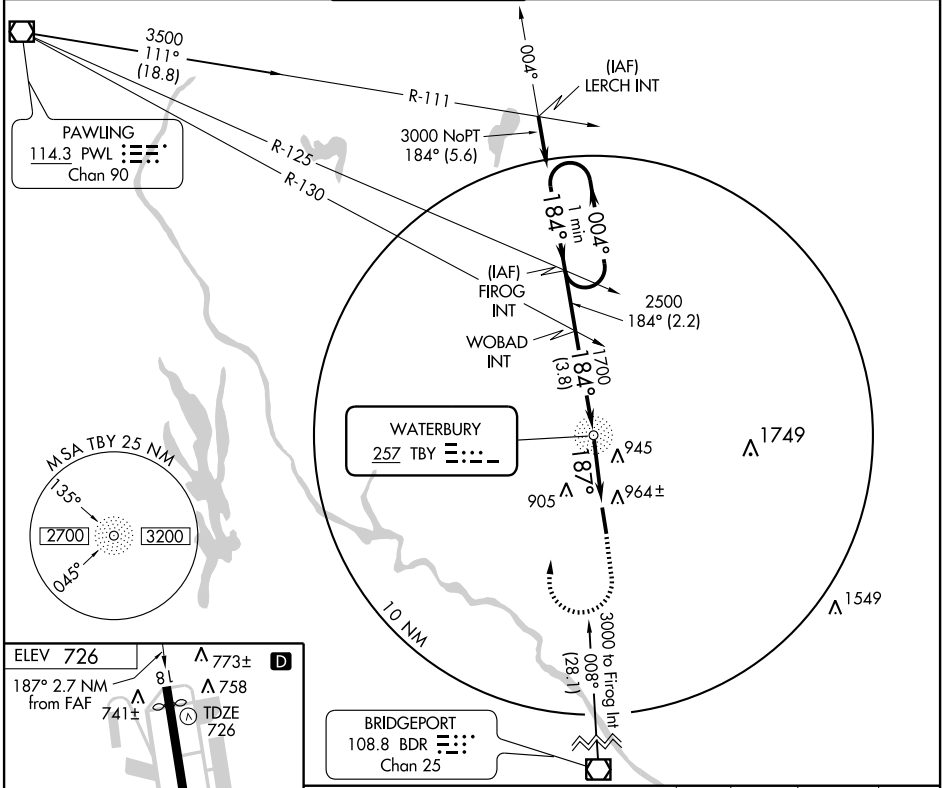
# NDB RWY 18

OXFORD / WATERBURY-OXFORD (OXC)

NDB TBY <b>257</b>	APP CRS <b>187°</b>	Rwy Idg <b>5000</b> TDZE <b>726</b> Apt Elev <b>726</b>
-----------------------	------------------------	--

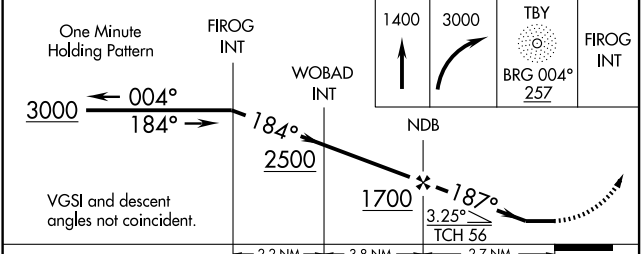
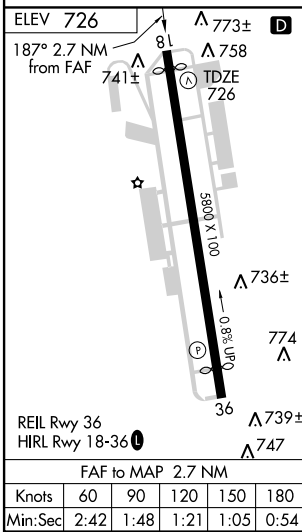
**NA** MISSED APPROACH: Climb to 1400 then climbing right turn to 3000 direct TBY NDB and via TBY NDB bearing 004° to FIROG INT and hold.

ATIS <b>132.975</b>	NEW YORK APP CON <b>124.075 343.65</b>	OXFORD TOWER ★ <b>118.475</b> (CTAF) <b>0</b>	GND CON <b>121.65</b>	CLNC DEL <b>121.65</b>	UNICOM <b>122.7</b>
------------------------	---	--	--------------------------	---------------------------	------------------------



NE-1, 19 NOV 2009 to 17 DEC 2009

NE-1, 19 NOV 2009 to 17 DEC 2009



CATEGORY	A	B	C	D
S-18	1280-1 554 (600-1)		1280-1½ 554 (600-1½)	1280-1¾ 554 (600-1¾)
CIRCLING	1280-1 554 (600-1)		1280-1½ 554 (600-1½)	1320-2 594 (600-2)