

WAAS CH 42901 W18A	APP CRS 185°	Rwy ldg 5000 TDZE 726 Apt Elev 726
--	------------------------	---

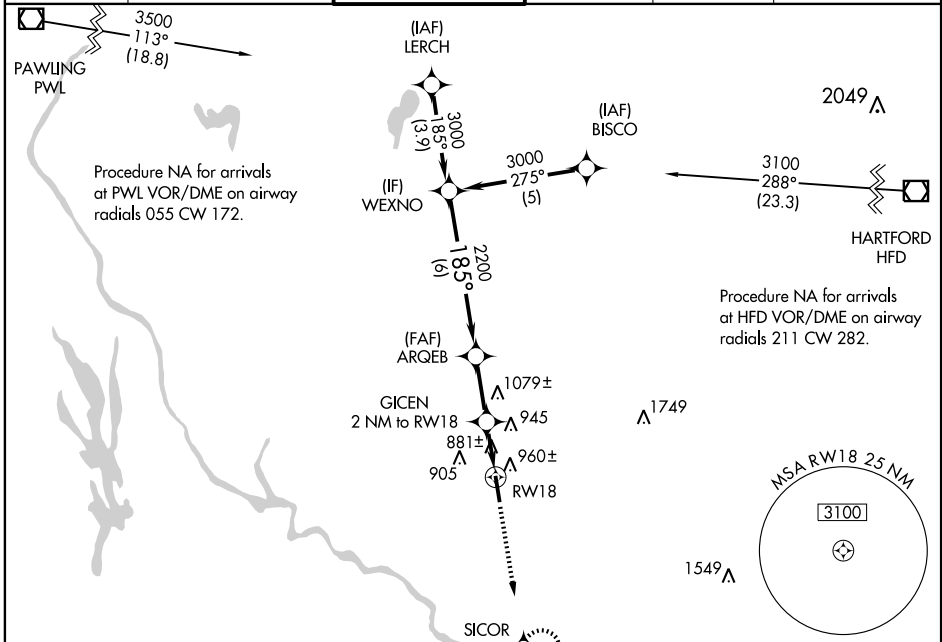
RNAV (GPS) RWY 18

OXFORD / WATERBURY-OXFORD (OXC)

⚠ DME/DME RNP-0.3 NA. If local altimeter setting not received, use Danbury altimeter setting and increase all DAs/MDAs 80 feet. For uncompensated Baro-VNAV systems, LNAV/VNAV NA below -1.6°C (4°F) or above 47°C (117°F). VDP and Baro-VNAV NA with Danbury altimeter setting. Visibility reduction by helicopters NA.

MISSED APPROACH: Climb to 2500 direct SICOR and hold.

ATIS 132.975	NEW YORK APP CON 124.075 343.65	OXFORD TOWER ★ 118.475 (CTAF) 0	GND CON 121.65	CLNC DEL 121.65	UNICOM 122.7
------------------------	---	--	--------------------------	---------------------------	------------------------



NE-1, 19 NOV 2009 to 17 DEC 2009

NE-1, 19 NOV 2009 to 17 DEC 2009

