

ATHENS, TENNESSEE

AL-5791 (FAA)

NDB RWY 20

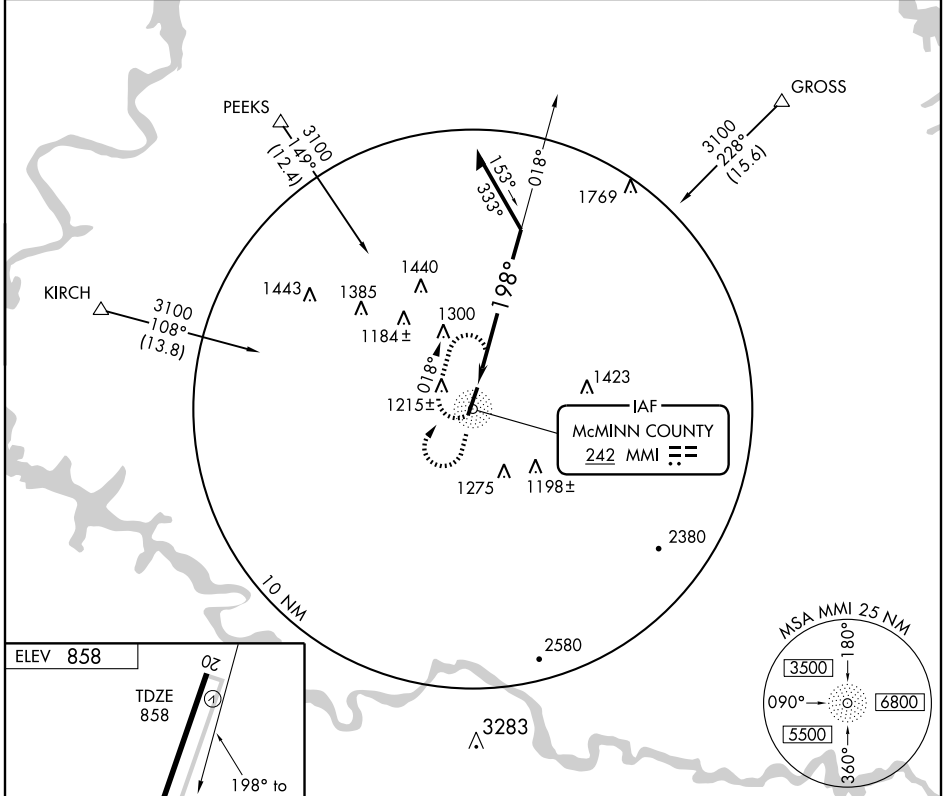
ATHENS/MCMINN COUNTY (MMI)

NDB	MMI	APP CRS	Rwy Idg	6450
242		198°	TDZE	858
			Apt Elev	858

▼ If local altimeter setting not received, use Knoxville altimeter setting and increase all MDAs 120 feet.
▲ NA Visibility reduction by helicopters NA.

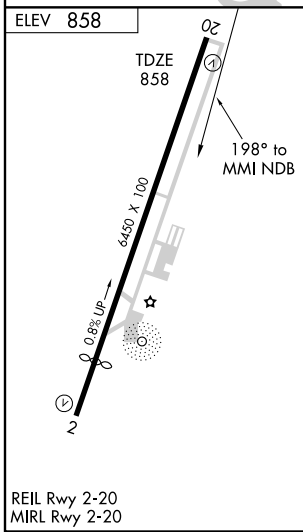
MISSED APPROACH: Climb to 3100 then right turn direct MMI NDB and hold, continue climb-in-hold to 3100.

AWOS-3 125.425	KNOXVILLE APP CON 123.9 353.6	GCO 121.725	UNICOM 122.8 (CTAF)
--------------------------	---	-----------------------	-------------------------------

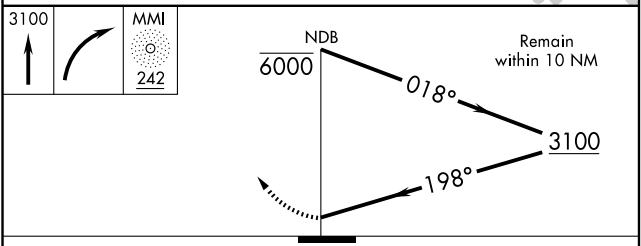


SE-1, 19 NOV 2009 to 17 DEC 2009

SE-1, 19 NOV 2009 to 17 DEC 2009



REIL Rwy 2-20
MIRL Rwy 2-20



CATEGORY	A	B	C	D
S-20	1940-1¼ 1082 (1100-1¼)	1940-1½ 1082 (1100-1½)	1940-3	1082 (1100-3)
CIRCLING	1940-1¼ 1082 (1100-1¼)	1940-1½ 1082 (1100-1½)	1940-3	1082 (1100-3)

ATHENS, TENNESSEE
Amdt 6 09183

35° 24'N-84° 34'W

ATHENS/MCMINN COUNTY (MMI)
NDB RWY 20