

ATHENS, TENNESSEE

AL-5791 (FAA)

RNAV (GPS) RWY 20

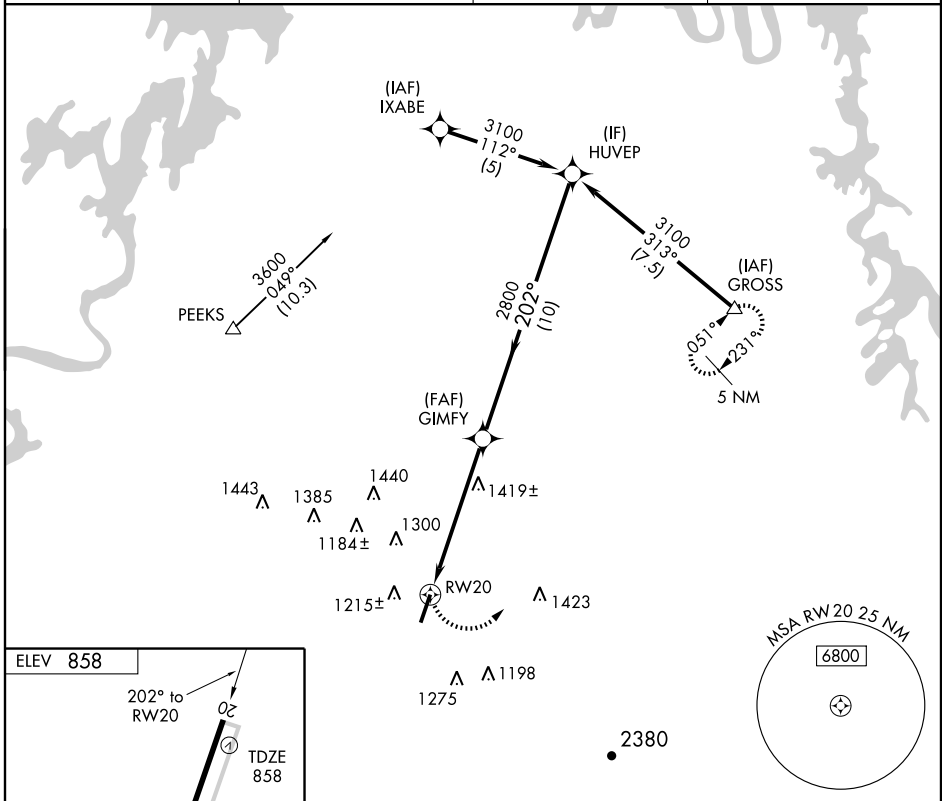
ATHENS/MCMINN COUNTY (MMI)

APP CRS	Rwy Idg	6450
202°	TDZE	858
	Apt Elev	858

▽ If local altimeter setting not received, use Mcghee Tyson altimeter setting and increase all MDAs 120 feet. DME/DME RNP-0.3 NA.
△ NA Visibility reduction by helicopters NA.

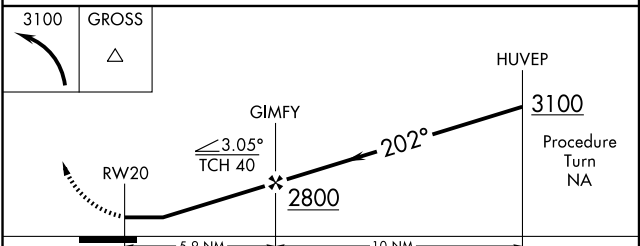
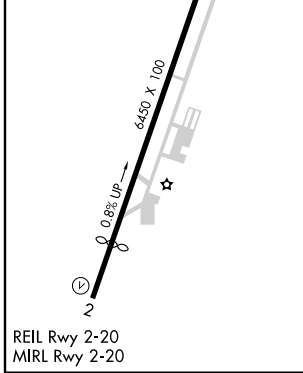
MISSED APPROACH: Climbing left turn to 3100 direct GROSS and hold.

AWOS-3 125.425	KNOXVILLE APP CON 123.9 353.6	GCO 121.725	UNICOM 122.8 (CTAF)
--------------------------	---	-----------------------	-------------------------------



SE-1, 19 NOV 2009 to 17 DEC 2009

SE-1, 19 NOV 2009 to 17 DEC 2009



CATEGORY	A	B	C	D
LNAV MDA	1680-1 822 (900-1)	1680-1¼ 822 (900-1¼)	1680-2½ 822 (900-2½)	1680-2¾ 822 (900-2¾)
CIRCLING	1680-1 822 (900-1)	1680-1¼ 822 (900-1¼)	1680-2½ 822 (900-2½)	1680-2¾ 822 (900-2¾)

ATHENS, TENNESSEE
 Orig 09183

35° 24'N-84° 34'W

ATHENS/MCMINN COUNTY (MMI) RNAV (GPS) RWY 20