

ATHENS, TENNESSEE

AL-5791 (FAA)

# NDB or GPS RWY 2

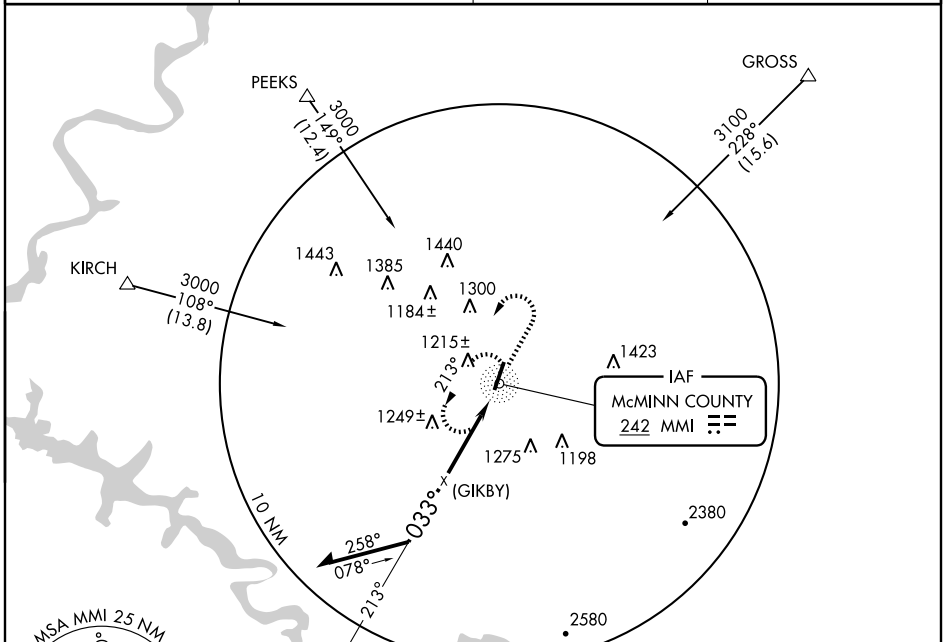
ATHENS/MCMINN COUNTY (MMI)

NDB MMI	APP CRS	Rwy Idg	<b>5500</b>
<b>242</b>	<b>033°</b>	TDZE	<b>827</b>
		Apt Elev	<b>858</b>

**▽** If local altimeter setting not received, use Knoxville altimeter setting and increase all MDAs 160 feet.

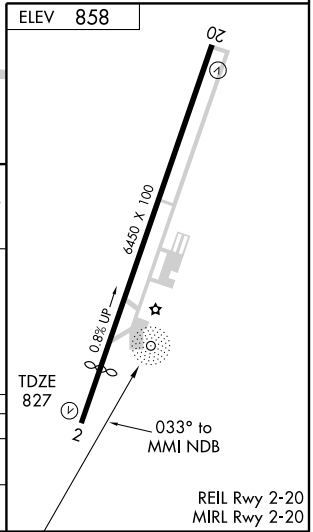
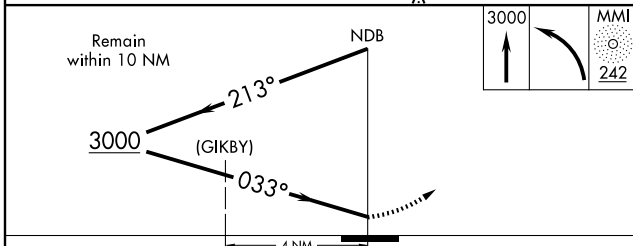
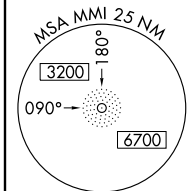
**▲ NA** MISSED APPROACH: Climb to 3000 then left turn direct MMI NDB and hold.

AWOS-3 <b>125.425</b>	KNOXVILLE APP CON <b>123.9 353.6</b>	GCO <b>121.725</b>	UNICOM <b>122.8</b> (CTAF)
--------------------------	---	-----------------------	-------------------------------



SE-1, 11 MAR 2010 to 08 APR 2010

SE-1, 11 MAR 2010 to 08 APR 2010



CATEGORY	A	B	C	D
S-2	1620-1 793 (800-1)	1620-1¼ 793 (800-1¼)	1620-2¼ 793 (800-2¼)	1620-2½ 793 (800-2½)
CIRCLING	1620-1 770 (800-1)	1620-1¼ 770 (800-1¼)	1620-2¼ 770 (800-2¼)	1620-2½ 770 (800-2½)

ATHENS, TENNESSEE  
Amdt 5A 09183

35° 24'N-84° 34'W

ATHENS/MCMINN COUNTY (MMI)  
**NDB or GPS RWY 2**

REIL Rwy 2-20  
MIRL Rwy 2-20