

ILS or LOC RWY 14

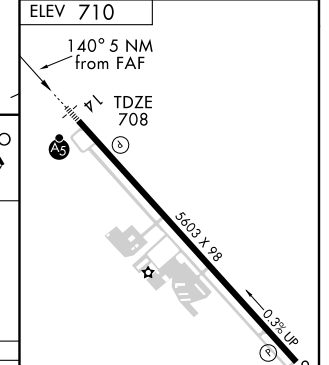
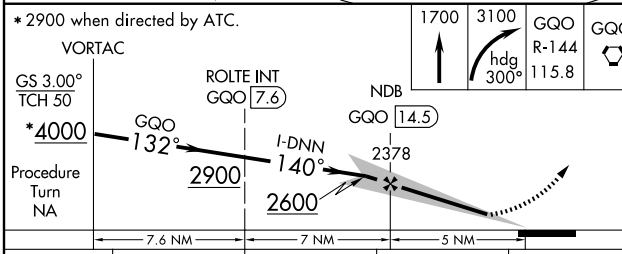
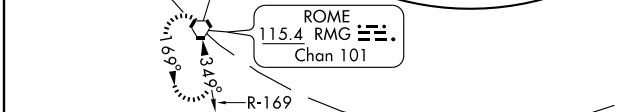
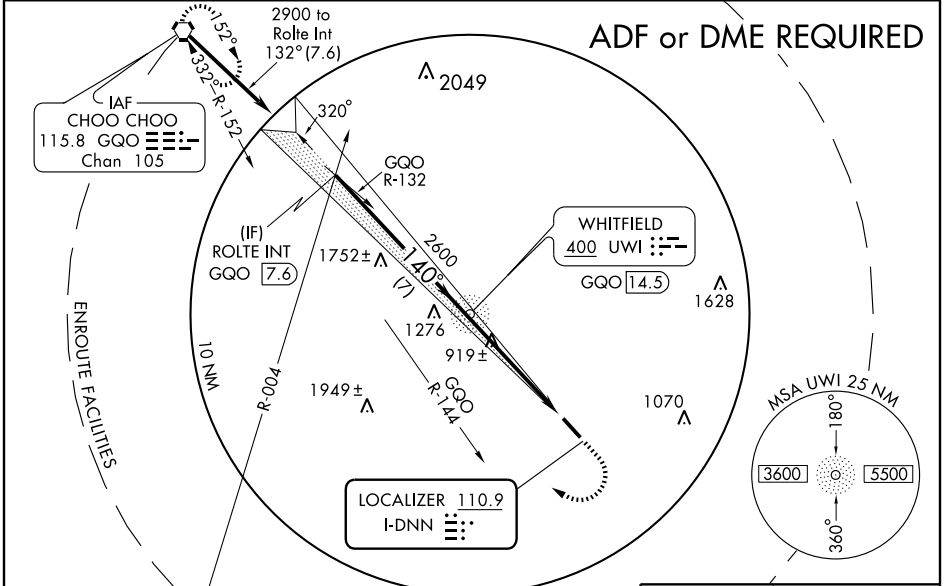
DALTON MUNI (DNN)

LOC I-DNN 110.9	APP CRS 140°	Rwy Idg 5603
		TDZE 708
		Apt Elev 710

When local altimeter setting not received, use Lovell Field, Chattanooga, TN altimeter setting and increase all DA 62 feet and all MDA 80 feet and S-LOC 14 Cats. C/D and Circling Cat. C visibilities ½ mile. Inoperative table does not apply to S-ILS 14. For inoperative MALSRL when using Lovell Field, Chattanooga, TN altimeter setting; increase S-LOC 14 Cats. A/B ½ mile. Visibility reduction by helicopters NA. For inoperative MALSRL, increase S-LOC 14 Cats. A/B visibility to 1 mile.

MALSRL
MISSED APPROACH: Climb to 1700 then climbing right turn to 3100 via heading 300° and GQO R-144 to GQO VORTAC and hold.

AWOS-3 127.65	CHATTANOOGA APP CON 125.1 379.1	CLNC DEL 120.25	UNICOM 122.975(CTAF) 0
-------------------------	---	---------------------------	----------------------------------



CATEGORY	A	B	C	D
S-ILS 14	959-¾ 251 (300-¾)			
S-LOC 14	1240-¾ 532 (600-¾)	1240-1 532 (600-1)	1240-1½ 532 (600-1½)	1260-2 550 (600-2)
CIRCLING	1240-1 530 (600-1)	1240-1½ 530 (600-1½)	1260-2 550 (600-2)	

HIRL Rwy 14-32 0

FAF to MAP 5 NM

Knots	60	90	120	150	180
Min:Sec	5:00	3:20	2:30	2:00	1:40

SE-4, 11 MAR 2010 to 08 APR 2010

SE-4, 11 MAR 2010 to 08 APR 2010