

FARMVILLE, VIRGINIA

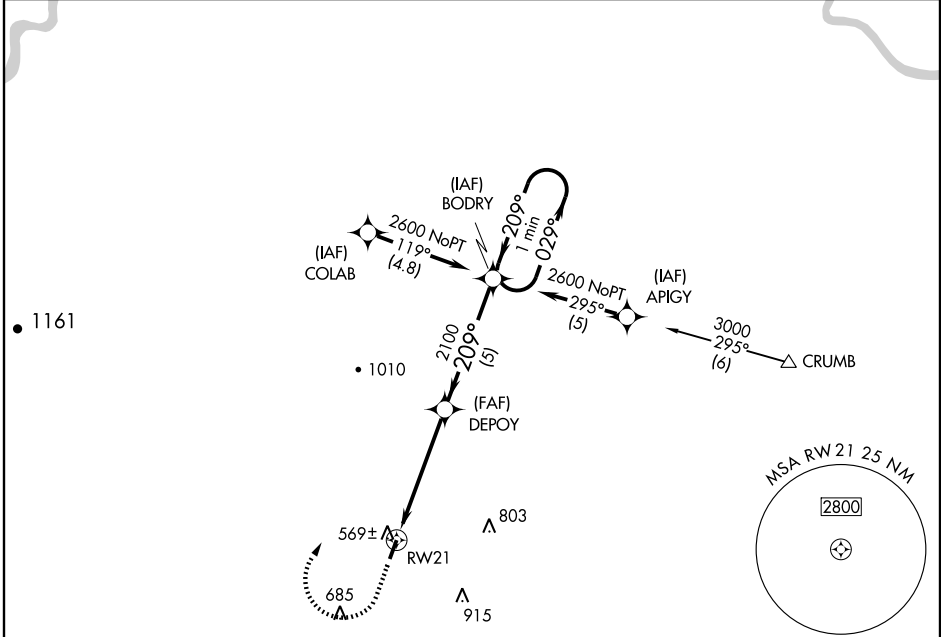
AL-5805 (FAA)

GPS RWY 21
FARMVILLE RGNL (FVX)

APP CRS	Rwy Idg	4400
209°	TDZE	417
	Apt Elev	417

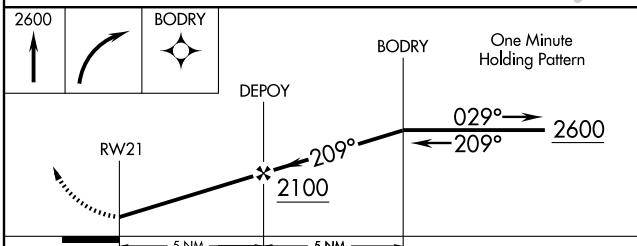
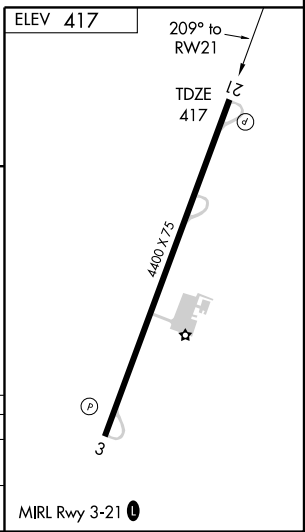
▼
▲ NA
MISSED APPROACH: Climb to 2600 then right turn direct BODRY WP and hold.

AWOS-3 132.725	WASHINGTON CENTER 135.4 263.1	UNICOM 122.8 (CTAF) 0	GCO 135.075
--------------------------	---	---------------------------------	-----------------------



NE-3, 11 MAR 2010 to 08 APR 2010

NE-3, 11 MAR 2010 to 08 APR 2010



CATEGORY	A	B	C	D
S-21	820-1	403 (500-1)	820-1½ 403 (500-1½)	NA
CIRCLING	900-1	483 (500-1)	920-1½ 503 (600-1½)	NA

FARMVILLE, VIRGINIA
Orig 07354

37°21'N-78°26'W

FARMVILLE RGNL (FVX)
GPS RWY 21