

FARMVILLE, VIRGINIA

AL-5805 (FAA)

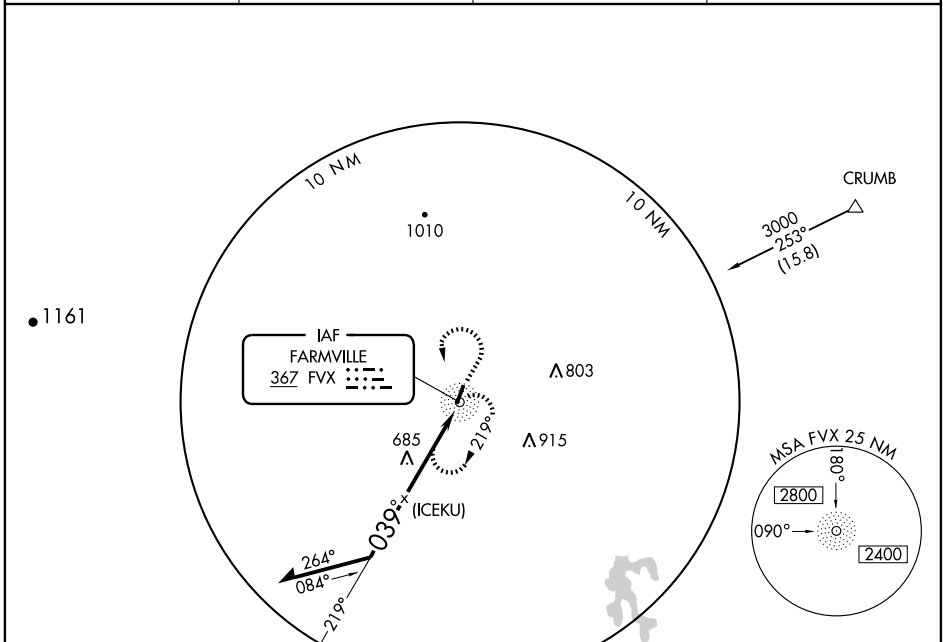
NDB or GPS RWY 3

FARMVILLE RGNL (FVX)

NDB FVX 367	APP CRS 039°	Rwy Idg 4400
		TDZE 410
		Apt Elev 417

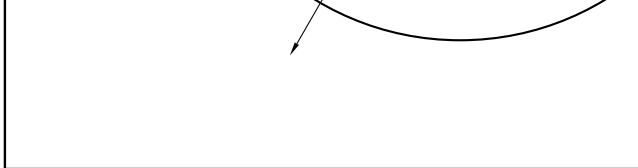
▼
▲ NA
MISSED APPROACH: Climb to 2300, then left turn direct FVX NDB and hold.

AWOS-3 132.725	WASHINGTON CENTER 135.4 263.1	UNICOM 122.8 (CTAF) 0	GCO 135.075
--------------------------	---	--	-----------------------

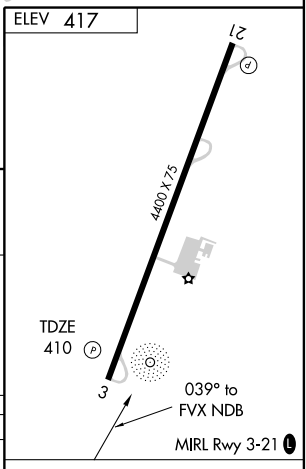


NE-3, 11 MAR 2010 to 08 APR 2010

NE-3, 11 MAR 2010 to 08 APR 2010



	2300	FVX 367
--	------	---------



CATEGORY	A	B	C	D
S-3	1220-1 810 (900-1)	1220-1¼ 810 (900-1¼)	1220-2¼ 810 (900-2¼)	NA
CIRCLING	1220-1 803 (900-1)	1220-1¼ 803 (900-1¼)	1220-2¼ 803 (900-2¼)	NA

Knots	60	90	120	150	180
Min:Sec					

FARMVILLE, VIRGINIA
Amdt 5 07354

37°21'N-78°26'W

FARMVILLE RGNL (FVX) NDB or GPS RWY 3