

# RNAV (GPS) RWY 25

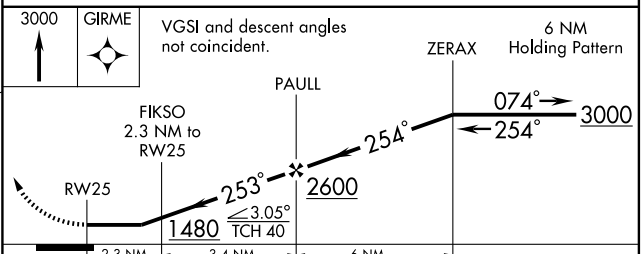
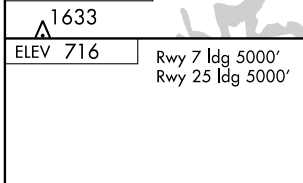
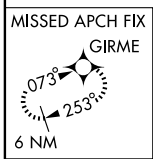
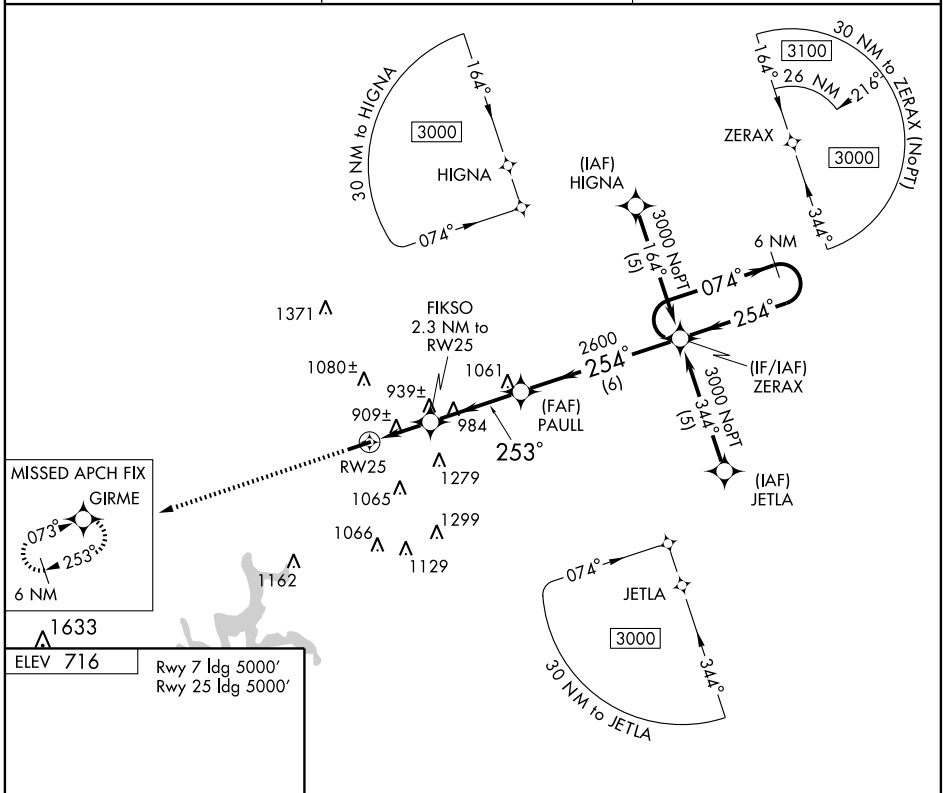
GLASGOW MUNI (GLW)

APP CRS	Rwy Idg	<b>5000</b>
<b>253°</b>	TDZE	<b>715</b>
	Apt Elev	<b>716</b>

**⚠** When local altimeter setting not received, use Bowling Green altimeter setting and increase all MDA 160 feet, LNAV Cat. C and D visibility ½ mile, Circling Cat. C ½ mile, Cat. D ¼ mile.  
**⚠** Visibility reduction by helicopters NA. DME/DME RNP-0.3 NA.

**MISSED APPROACH:**  
 Climb to 3000 direct GIRME and hold.

AWOS-3 <b>118.525</b>	MEMPHIS CENTER <b>132.1 263.1</b>	UNICOM <b>122.8</b> (CTAF) <b>0</b>
--------------------------	--------------------------------------	--



CATEGORY	A	B	C	D
LNAV MDA	1200-1	485 (500-1)	1200-1¼ 485 (500-1¼)	1200-1½ 485 (500-1½)
CIRCLING	1220-1 504 (600-1)	1240-1 524 (600-1)	1260-1½ 544 (600-1½)	1540-2¾ 824 (900-2¾)

HIRL Rwy 7-25 **0**  
 REIL Rwy 7 and 25 **0**

# RNAV (GPS) RWY 25

SE-1, 19 NOV 2009 to 17 DEC 2009

SE-1, 19 NOV 2009 to 17 DEC 2009