

RNAV (GPS) RWY 7

GLASGOW MUNI (GLW)

WAAS CH 77607 W07A	APP CRS 073°	Rwy Idg TDZE Apt Elev	5000 709 716
--	------------------------	-----------------------------	---

DME/DME RNP-0.3 NA. Visibility reduction by helicopters NA. When local altimeter setting not received, use Bowling Green altimeter setting and increase all MDA 160 feet, LPV DA to 1214 feet, LNAV/VNAV DA to 1313 feet, LPV and LNAV/VNAV all Cats. visibilities ½ mile, LNAV Cats. C and D visibilities ¼ mile, and Circling Cat. C visibility ½ mile, Cat. D visibility ¼ mile. VDP NA when using Bowling Green altimeter setting. Baro-VNAV NA when using Bowling Green altimeter setting. For uncompensated Baro-VNAV systems, LNAV/VNAV NA below -16°C (4°F) or above 47°C (116°F).

MISSED APPROACH:
Climb to 3000 direct ZERAX and hold.

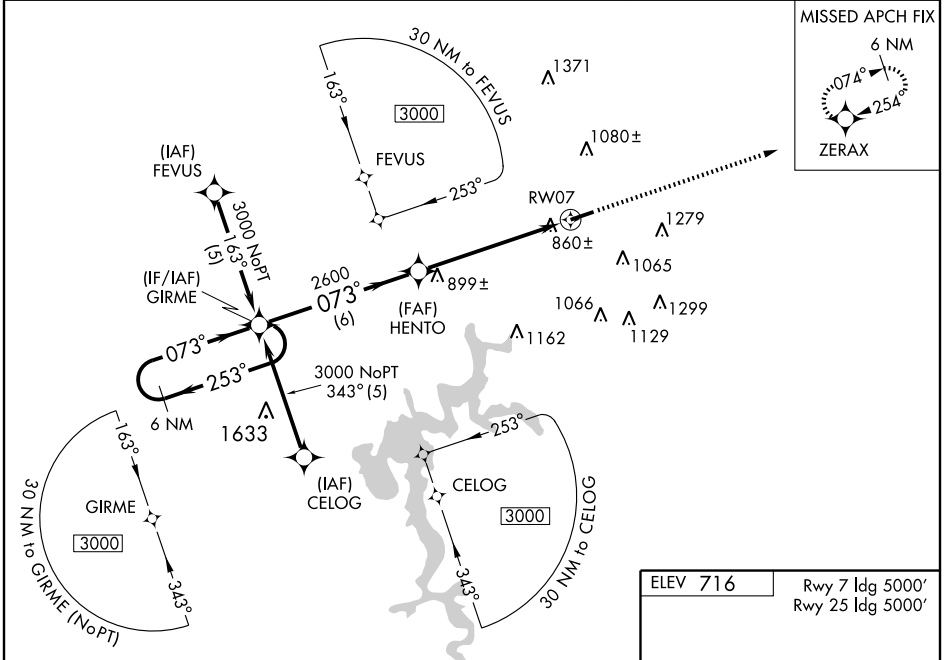
AWOS-3
118.525

MEMPHIS CENTER
132.1 263.1

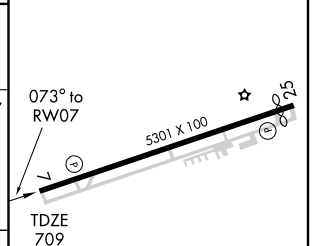
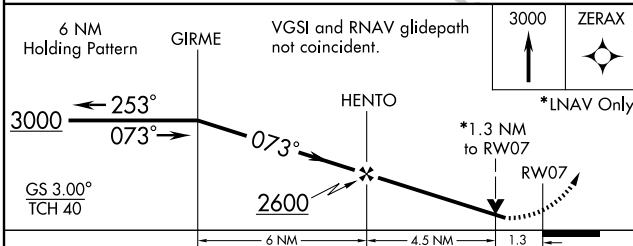
UNICOM
122.8 (CTAF) **L**

SE-1, 11 MAR 2010 to 08 APR 2010

SE-1, 11 MAR 2010 to 08 APR 2010



ELEV 716	Rwy 7 Idg 5000'
	Rwy 25 Idg 5000'



CATEGORY	A	B	C	D
LPV DA		1071-1¼	362 (400-1¼)	
LNAV/VNAV DA		1170-1¾	461 (500-1¾)	
LNAV MDA	1140-1	431 (500-1)	1140-1¼ 431 (500-1¼)	1140-1½ 431 (500-1½)
CIRCLING	1220-1 504 (600-1)	1240-1 524 (600-1)	1260-1½ 544 (600-1½)	1540-2¾ 824 (900-2¾)

HIRL Rwy 7-25 **L**
REIL Rwy 7 and 25 **L**