

GLASGOW, KENTUCKY

AL-5818 (FAA)

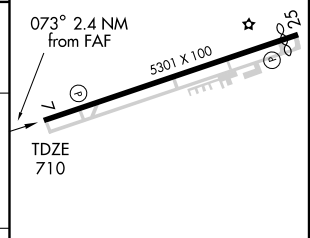
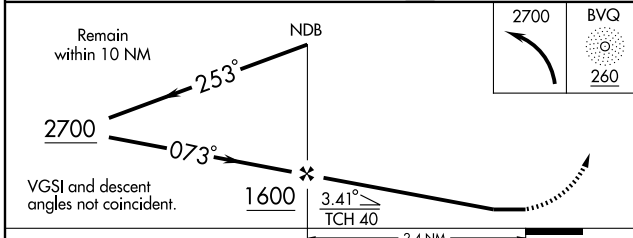
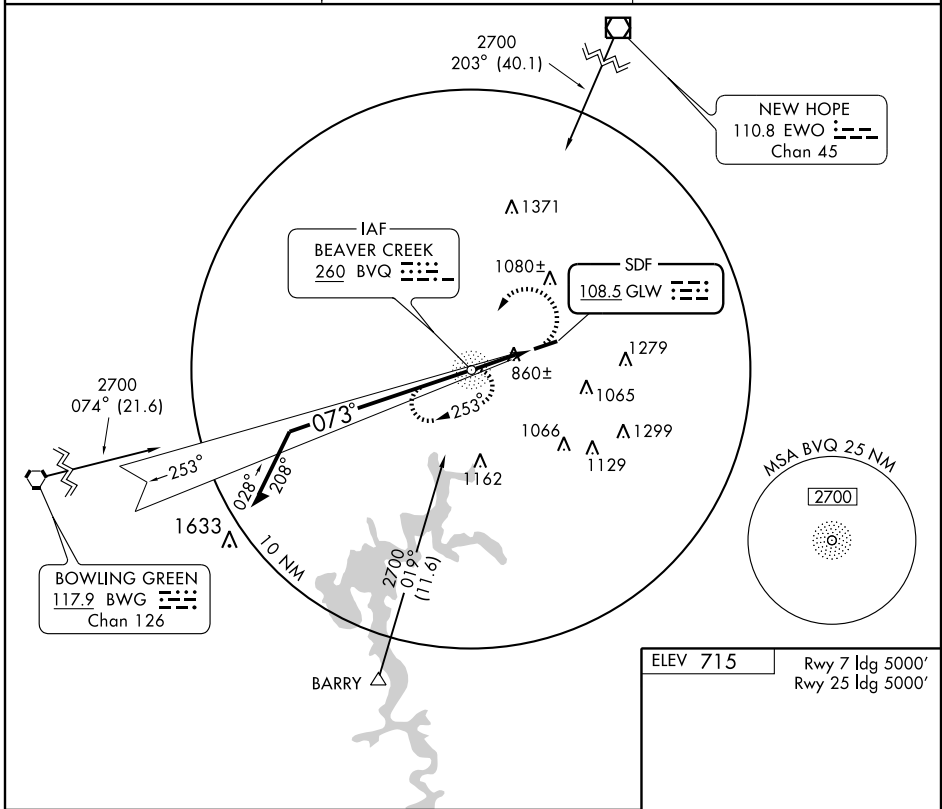
SDF RWY 7
GLASGOW MUNI (GLW)

SDF GLW 108.5	APP CRS 073°	Rwy ldg 5000
		TDZE 710
		Apt Elev 715

⚠ If local altimeter setting not received, use Bowling Green altimeter setting and increase all MDAs 140 feet.
⚠ NA ADF REQUIRED.

MISSED APPROACH: Climbing left turn to 2700 direct BVQ NDB and hold.

AWOS-3 118.525	MEMPHIS CENTER 132.1 263.1	UNICOM 122.8 (CTAF) 0
--------------------------	--------------------------------------	---------------------------------



CATEGORY	A	B	C	D
S-7	1120-1	410 (500-1)	1120-1¼	410 (500-1¼)
CIRCLING	1220-1	505 (600-1)	1260-1½	1540-2¾ 825 (900-2¾)

HIRL Rwy 7-25 0	REIL Rwy 7 and 25 0
FAF to MAP 2.4 NM	
Knots	60 90 120 150 180
Min:Sec	2:24 1:36 1:12 0:58 0:48

GLASGOW, KENTUCKY
Amdt 10 07354

37°02'N-85°57'W

GLASGOW MUNI (GLW)
SDF RWY 7

SE-1, 19 NOV 2009 to 17 DEC 2009

SE-1, 19 NOV 2009 to 17 DEC 2009