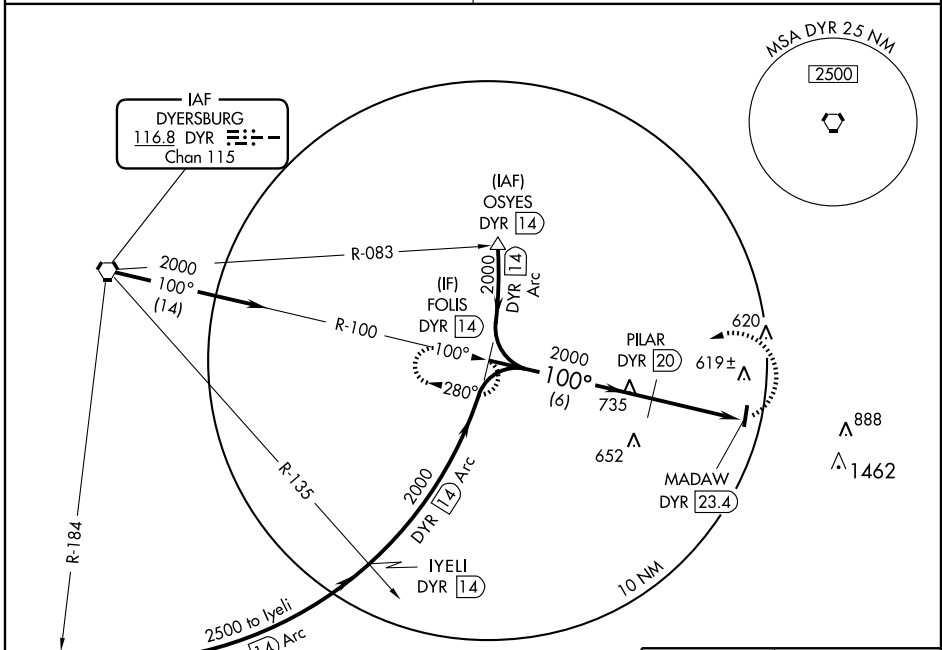


VORTAC DYR 116.8 Chan 115	APP CRS 100°	Rwy Idg TDZE Apt Elev	N/A N/A 359
--	------------------------	-----------------------------	--

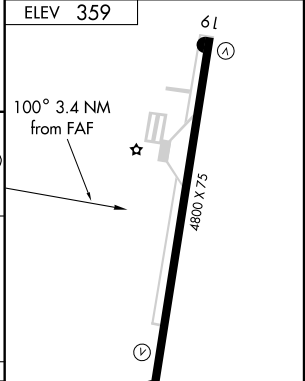
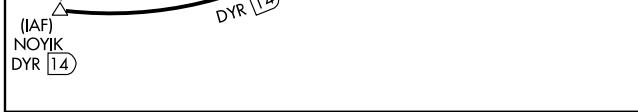
VOR/DME-A
TRENTON /GIBSON COUNTY (TGC)

<p>▼ Obtain local altimeter setting on CTAF; when not received use McKellar-Sipes Rgnl altimeter setting.</p> <p>▲ NA</p>	<p>MISSED APPROACH: Climbing left turn to 2500 via DYR VORTAC R-100 to FOLIS/DYR 14 DME and hold.</p>
<p>MEMPHIS CENTER 134.65 316.15</p>	<p>UNICOM 122.8 (CTAF)</p>



SE-1, 19 NOV 2009 to 17 DEC 2009

SE-1, 19 NOV 2009 to 17 DEC 2009



Procedure Turn NA	FOLIS DYR 14	PILAR DYR 20	MADAW DYR 23.4
2000	100°	2000	100°
6 NM		3.4 NM	

CATEGORY	A	B	C	D
CIRCLING	920-1 561 (600-1)	920-1¼ 561 (600-1¼)	920-1½ 561 (600-1½)	920-2 561 (600-2)
MCKELLAR-SIPES RGNL ALTIMETER SETTING MINIMUMS				
CIRCLING	980-1 621 (700-1)	980-1¼ 621 (700-1¼)	980-1¾ 621 (700-1¾)	980-2 621 (700-2)

ELEV 359	61				
100° 3.4 NM from FAF					
DYR R-100 116.8					
FOLIS DYR 14					
MIRL Rwy 1-19					
REIL Rwys 1 and 19					
Knots	60	90	120	150	180
Min:Sec					