

# RNAV (GPS) RWY 19

TRENTON /GIBSON COUNTY (T'GC)

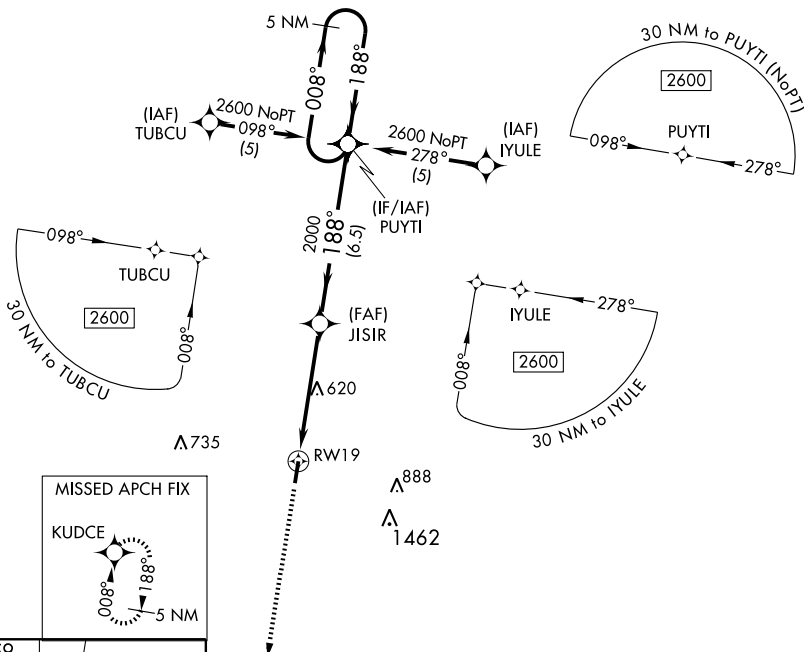
APP CRS	Rwy Idg	<b>4800</b>
<b>188°</b>	TDZE	<b>357</b>
	Apt Elev	<b>359</b>

▼ Obtain local altimeter setting on CTAF; when not received use McKellar-Sipes Rgnl altimeter setting.  
 ▲ NA Circling to Rwy 1 NA at night. DME/DME RNP-0.3 NA.  
 VDP NA when using McKellar-Sipes Rgnl altimeter setting.

MISSED APPROACH: Climb to 2600 direct KUDCE and hold.

MEMPHIS CENTER  
**134.65 316.15**

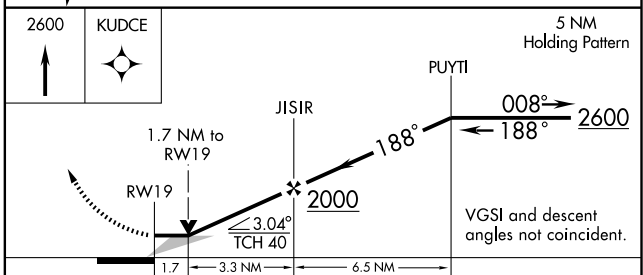
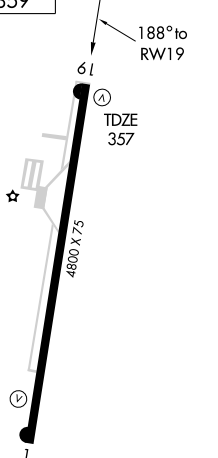
UNICOM  
**122.8 (CTAF)**



SE-1, 19 NOV 2009 to 17 DEC 2009

SE-1, 19 NOV 2009 to 17 DEC 2009

ELEV 359



CATEGORY	A	B	C	D
LNAV MDA	920-1 563 (600-1)		920-1½ 563 (600-1½)	920-1¾ 563 (600-1¾)
CIRCLING	920-1 561 (600-1)		920-1½ 561 (600-1½)	920-2 561 (600-2)
MCKELLAR-SIPES RGNL ALTIMETER SETTING MINIMUMS				
LNAV MDA	980-1 623 (700-1)		980-1¾ 623 (700-1¾)	980-2 623 (700-2)
CIRCLING	980-1 621 (700-1)		980-1¾ 621 (700-1¾)	980-2 621 (700-2)