

RNAV (GPS) Z RWY 18

APPLE VALLEY (APV)

WAAS Ch 63102 W18A	APP CRS 182°	Rwy Idg TDZE Apt Elev	6498 3062 3062
--	------------------------	-----------------------------	---

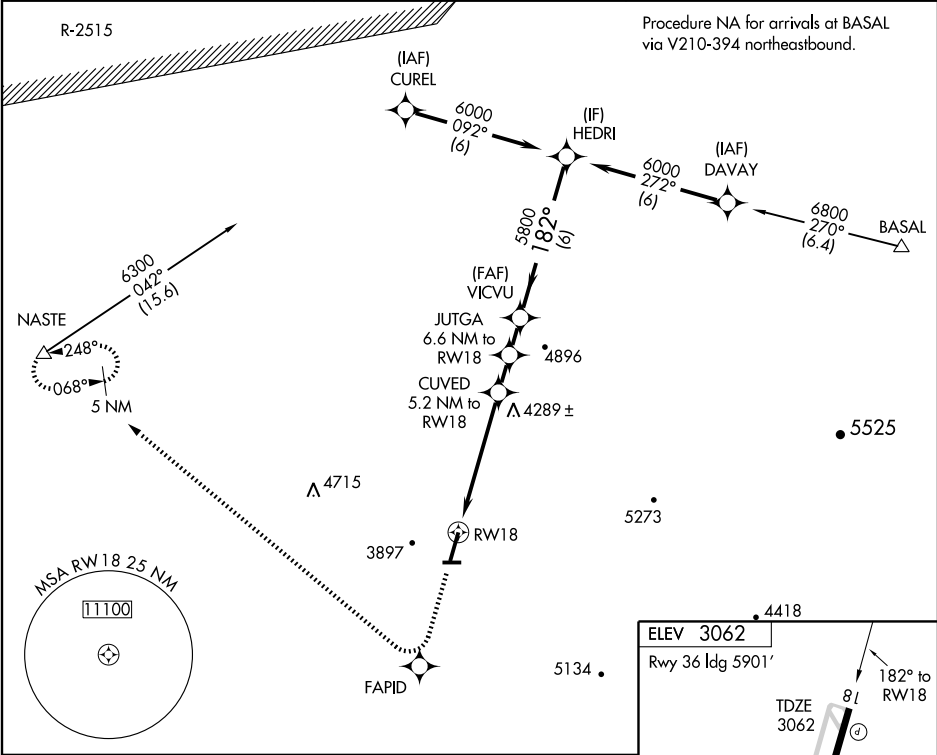
▼ Circling to Rwy 8 and 26 NA at night.
DME/DME RNP-0.3 NA.
▲ NA Visibility reduction by helicopters NA.
W Use Southern California Logistics altimeter setting; if not received, procedure NA.

MISSED APPROACH: Climb to 6000 direct FAPID and right turn via 296° track to NASTE and hold.

SOUTHERN CALIFORNIA LOGISTICS
AWOS-3
109.4

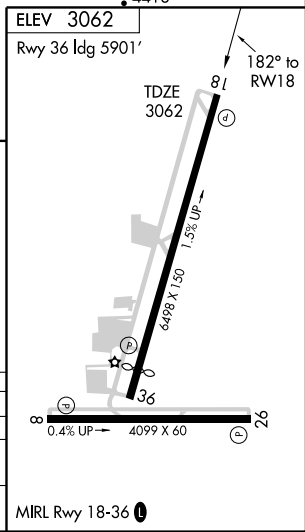
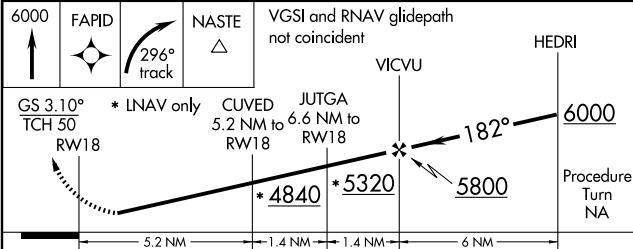
JOSHUA APP CON
124.55 363.0

UNICOM
122.8 (CTAF) 0



SW-3, 11 FEB 2010 to 11 MAR 2010

SW-3, 11 FEB 2010 to 11 MAR 2010



CATEGORY	A	B	C	D
LPV DA	3439-1¼		377 (400-1¼)	
LNAV MDA	4600-1¼ 1538 (1600-1¼)	4600-1½ 1538 (1600-1½)	4600-3	1538 (1600-3)
CIRCLING	4600-1¼ 1538 (1600-1¼)	4600-1½ 1538 (1600-1½)	4600-3 1538 (1600-3)	4660-3 1598 (1600-3)