

RNAV (GPS) RWY 18

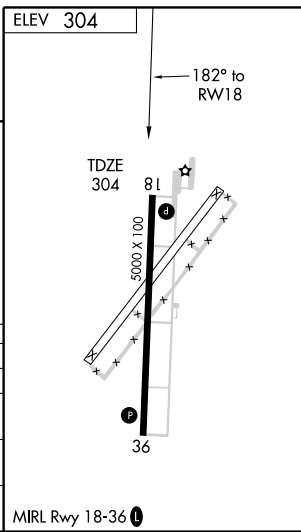
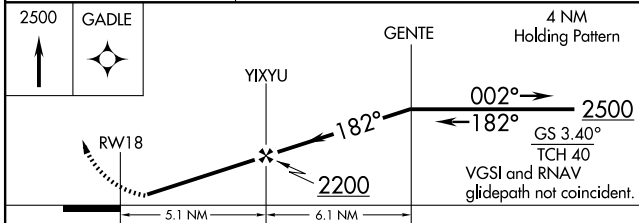
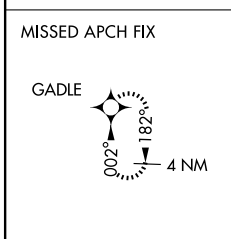
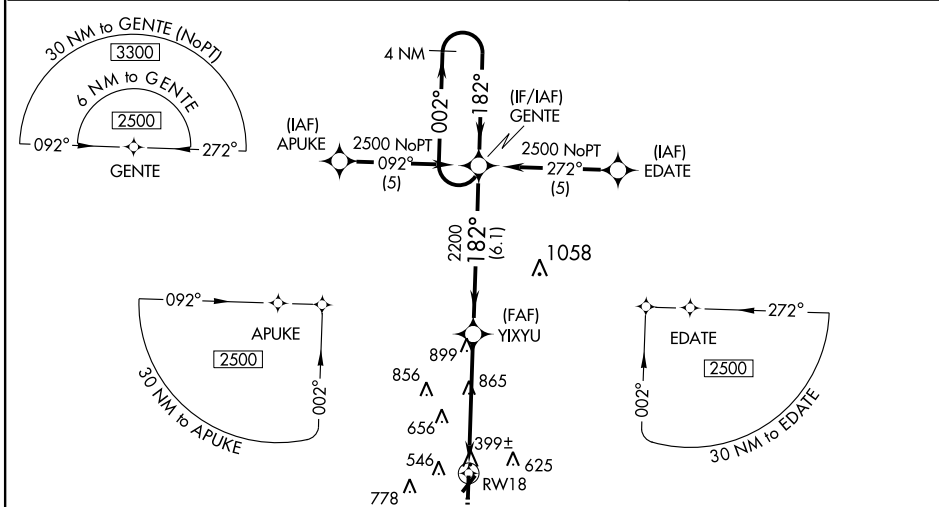
DEXTER MUNI (DXE)

| | | | |
|--|------------------------|-----------------------------|---|
| WAAS Ch 62808 W18A | APP CRS 182° | Rwy Idg TDZE Apt Elev | 5000 304 304 |
|--|------------------------|-----------------------------|---|

▼ BARO-VNAV NA. DME/DME RNP-0.3 NA.
▲ NA Use Poplar Bluff altimeter setting, when not recieved use Cape Girardeau Rgnl altimeter setting and increase all DA 33 feet and LPV visibilities ¼ mile all Cats and increase all MDA 40 feet. Visibility reduction by helicopters NA.

MISSED APPROACH: Climb to 2500 direct GADLE and hold.

| | | |
|-------------------------------------|--|---------------------------------|
| POPLAR BLUFF ASOS 124.225 | MEMPHIS CENTER 133.65 292.15 | UNICOM 122.8 (CTAF) 0 |
|-------------------------------------|--|---------------------------------|



| CATEGORY | A | B | C | D |
|--------------|---------|--------------|-------------------------|----|
| LPV DA | 724-1¼ | 420 (500-1¼) | | NA |
| LNAV/VNAV DA | 854-1¾ | 550 (600-1¾) | | NA |
| LNAV MDA | 1200-1¼ | 896 (900-1¼) | 1200-2¾ 896 (900-2¾) | NA |
| CIRCLING | 1200-1¼ | 896 (900-1¼) | 1200-2¾ 896 (900-2¾) | NA |

NC-3, 11 MAR 2010 to 08 APR 2010

NC-3, 11 MAR 2010 to 08 APR 2010