

VOR/DME-A
HUMBOLDT MUNI (M53)

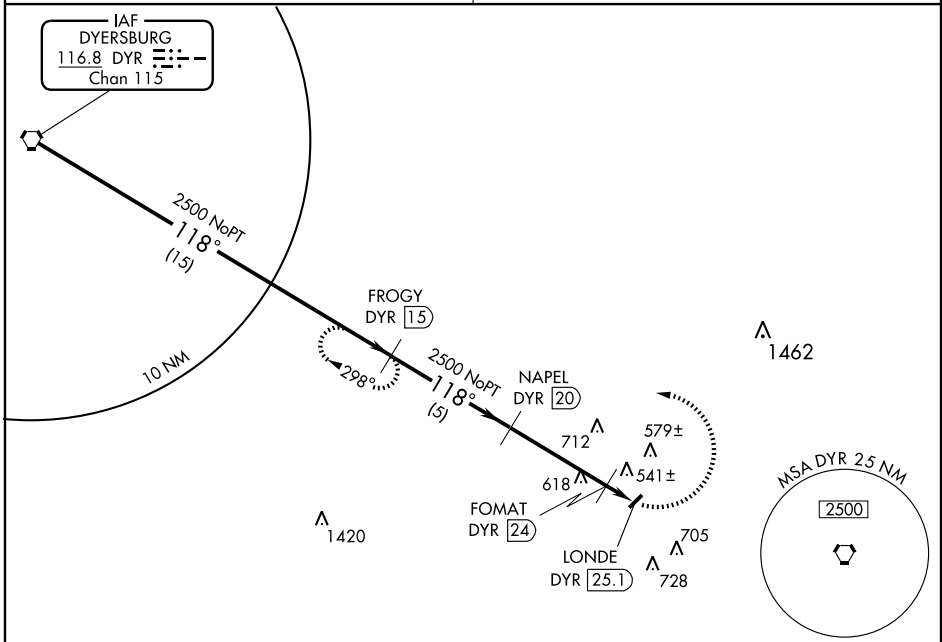
VORTAC DYR 116.8 Chan 115	APP CRS 118°	Rwy Idg TDZE Apt Elev	N/A N/A 421
---	------------------------	-----------------------------	--

▼
▲ NA Use Jackson altimeter setting.

MISSED APPROACH: Climbing left turn to 2500 via DYR R-118 to FROGY 15 DME and hold.

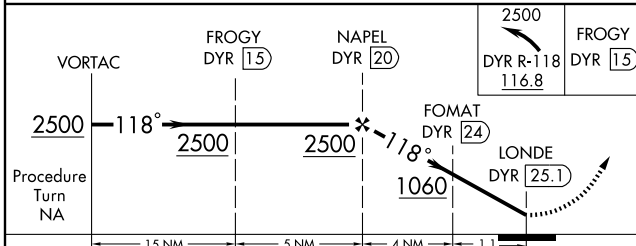
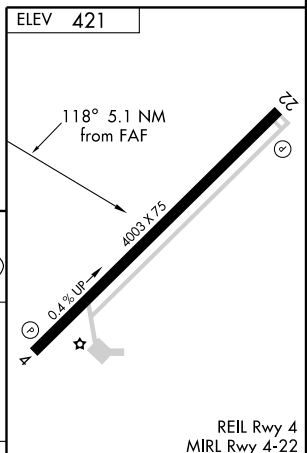
MEMPHIS CENTER
134.65 316.15

UNICOM
122.8 (CTAF)



SE-1, 11 FEB 2010 to 11 MAR 2010

SE-1, 11 FEB 2010 to 11 MAR 2010



CATEGORY	A	B	C	D
CIRCLING	900-1 479 (500-1)	920-1¼ 499 (500-1¼)	920-1½ 499 (500-1½)	1060-2 639 (700-2)

ELEV	421				
Knots	60	90	120	150	180
Min:Sec					