

ONEIDA, TENNESSEE

AL-5841 (FAA)

# RNAV (GPS) RWY 23

ONEIDA/SCOTT MUNI (SCX)

APP CRS	Rwy Idg	<b>5502</b>
<b>232°</b>	TDZE	<b>1531</b>
	Apt Elev	<b>1545</b>

**▼** DME/DME RNP-0.3 NA. GPS or RNP-0.3 Required.  
**▲** NA Inoperative table does not apply.  
 Circling NA at night to Rwy 05.

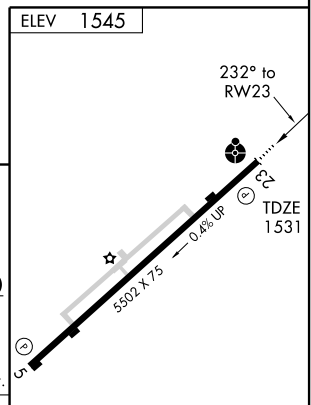
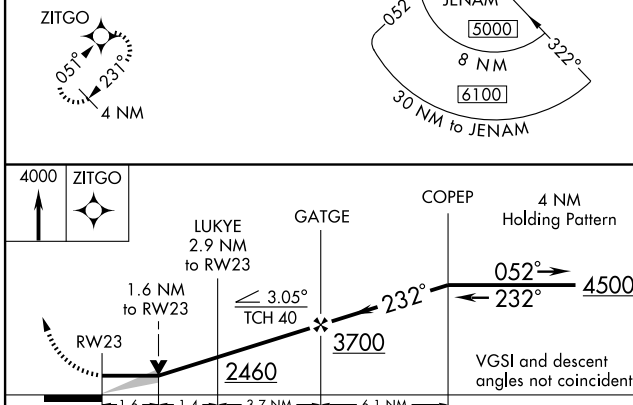
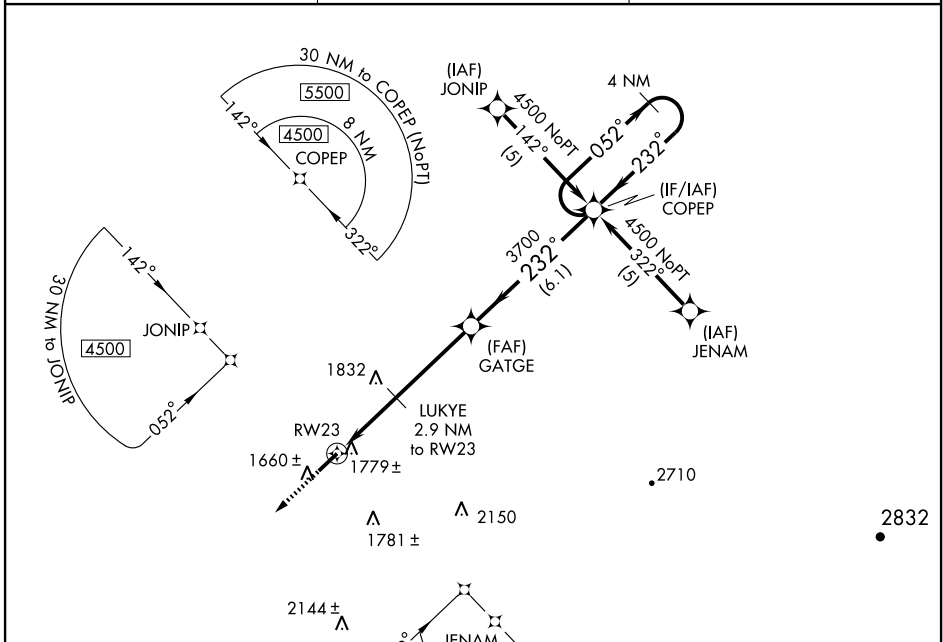
ODALS

MISSED APPROACH: Climb to 4000  
 direct ZITGO WP and hold.

AWOS-3  
**135.025**

INDIANAPOLIS CENTER  
**124.625 371.925**

UNICOM  
**122.8 (CTAF) 0**



CATEGORY	A	B	C	D
LNVA MDA	2040-1 509 (500-1)		2040-1½ 509 (500-1½)	
CIRCLING	2080-1 535 (600-1)		2080-1½ 535 (600-1½)	2100-2 555 (600-2)

MIRL Rwy 5-23 0  
 REIL Rlys 5 and 23

SE-1, 19 NOV 2009 to 17 DEC 2009

SE-1, 19 NOV 2009 to 17 DEC 2009

ONEIDA, TENNESSEE  
 Orig 09183

36° 27' N - 84° 35' W

# RNAV (GPS) RWY 23