

ONEIDA, TENNESSEE

AL-5841 (FAA)

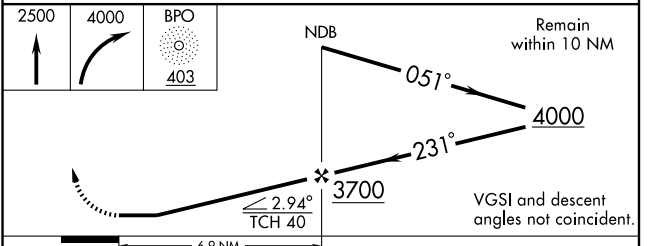
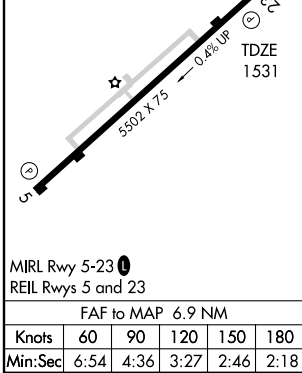
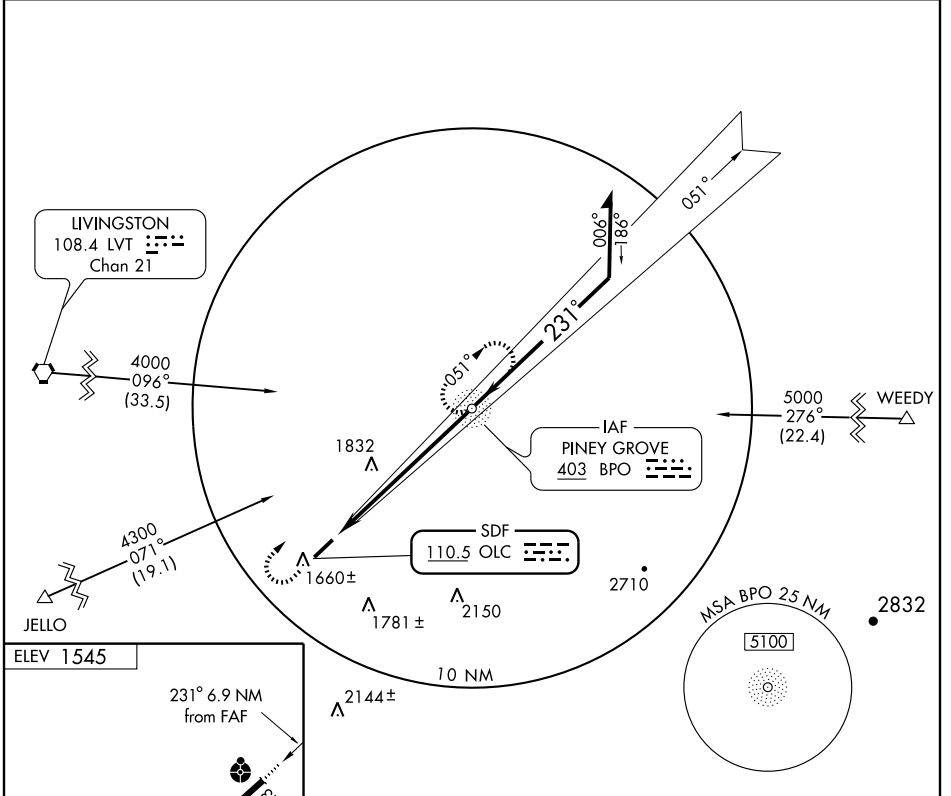
SDF OLC	APP CRS	Rwy Idg	<b>5502</b>
<b>110.5</b>	<b>231°</b>	TDZE	<b>1531</b>
		Apt Elev	<b>1545</b>

# SDF RWY 23

ONEIDA/SCOTT MUNI (SCX)

 	Inoperative table does not apply to Cat C. ADF REQUIRED		MISSED APPROACH: Climb to 2500, then climbing right turn to 4000 direct BPO NDB and hold.

AWOS-3 <b>135.025</b>	INDIANAPOLIS CENTER <b>124.625 371.925</b>	UNICOM <b>122.8 (CTAF)</b>
--------------------------	---	-------------------------------



CATEGORY	A	B	C	D
S-23	2160-3/4 629 (700-3/4)		2160-1 3/4 629 (700-1 3/4)	2160-2 629 (700-2)
CIRCLING	2160-1 615 (700-1)		2160-1 3/4 615 (700-1 3/4)	2160-2 615 (700-2)

ONEIDA, TENNESSEE  
Amdt 5 09183

36°27'N-84°35'W

# ONEIDA/SCOTT MUNI (SCX) SDF RWY 23

SE-1, 19 NOV 2009 to 17 DEC 2009

SE-1, 19 NOV 2009 to 17 DEC 2009