

ONEIDA, TENNESSEE

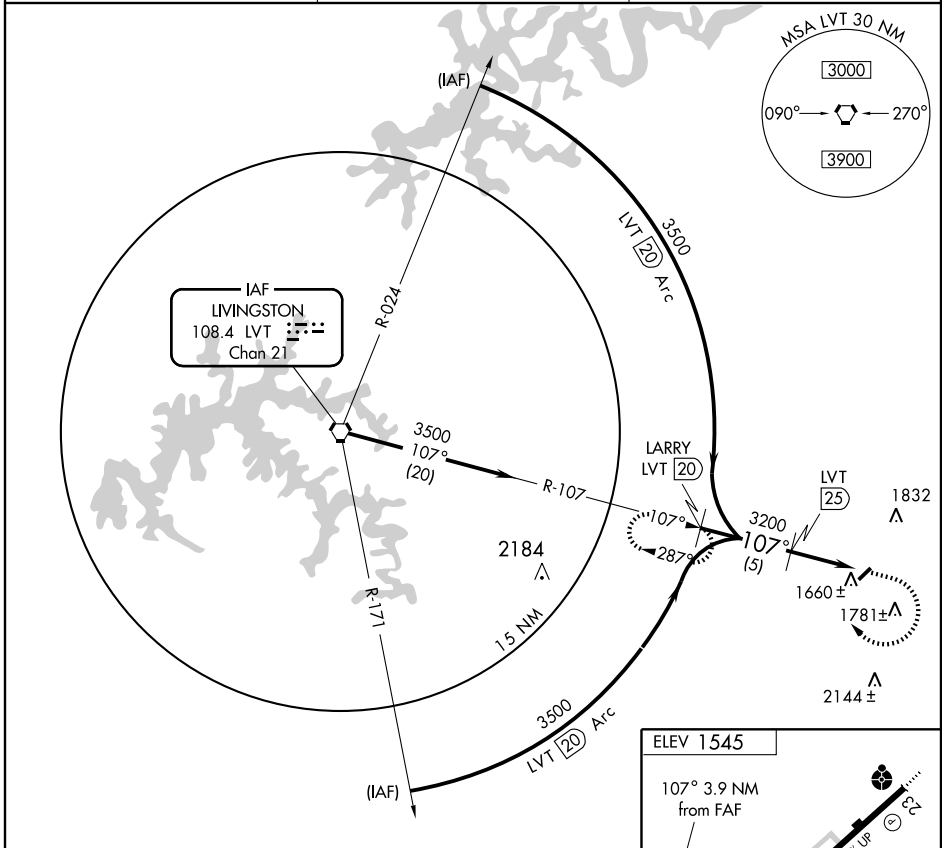
AL-5841 (FAA)

VORTAC LVT 108.4 Chan 21	APP CRS 107°	Rwy Idg TDZE Apt Elev	N/A N/A 1545
---------------------------------------	------------------------	-----------------------------	---

VOR/DME-A
ONEIDA/SCOTT MUNI (SCX)

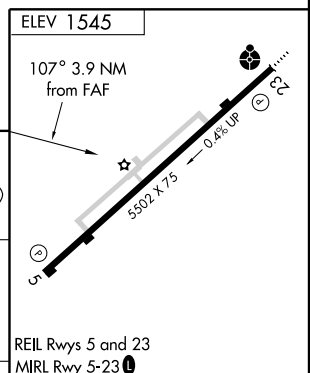
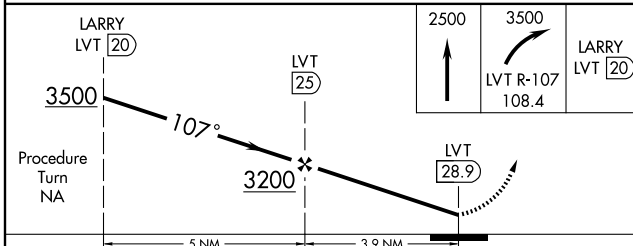
	MISSED APPROACH: Climb to 2500 then climbing right turn to 3500 via LVT R-107 to LARRY/20 DME and hold.
--	---

AWOS-3 135.025	INDIANAPOLIS CENTER 124.625 371.925	UNICOM 122.8 (CTAF)
--------------------------	---	-------------------------------



SE-1, 19 NOV 2009 to 17 DEC 2009

SE-1, 19 NOV 2009 to 17 DEC 2009



CATEGORY	A	B	C	D	Knots	60	90	120	150	180
CIRCLING	2080-1 535 (600-1)	2080-1¼ 535 (600-1¼)	2080-1½ 535 (600-1½)	2100-2 555 (600-2)	Min:Sec					

ONEIDA, TENNESSEE
Amdt 5A 09183

36°27'N-84°35'W

ONEIDA/SCOTT MUNI (SCX)
VOR/DME-A