

RNAV (GPS) RWY 28

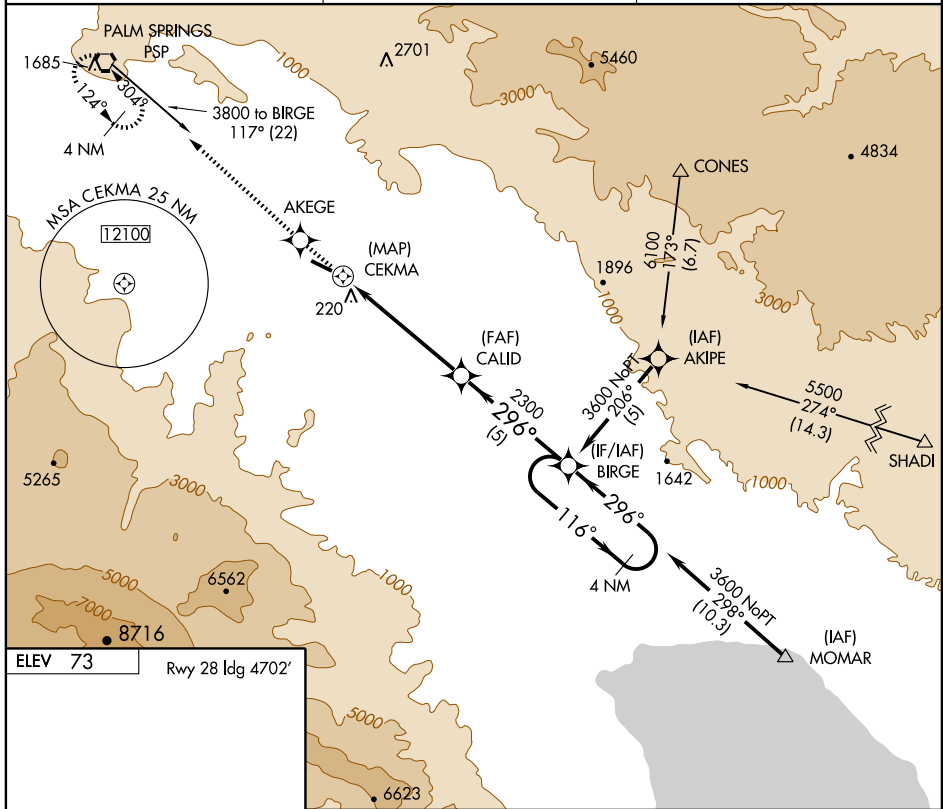
PALM SPRINGS/BERMUDA DUNES (UDD)

APP CRS 296°	Rwy Idg 4702
	TDZE 66
	Apt Elev 73

NA GPS or RNP-0.3 required. DME/DME RNP-0.3 NA. Use Jacqueline Cochran Rgnl altimeter setting.

MISSED APPROACH: Climb to 3300 via course 296° to AKEGE WP then right turn via course 298° to PSP VORTAC and hold.

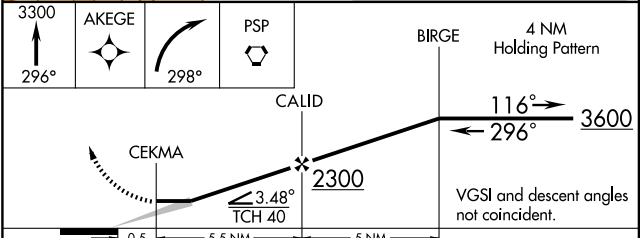
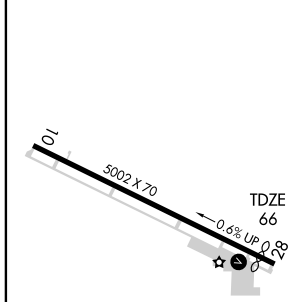
JACQUELINE COCHRAN REGIONAL ASOS 118.325	SOCAL APP CON ★ 135.275 251.1	UNICOM 122.8 (CTAF) 0
--	---	---------------------------------



SW-3, 11 MAR 2010 to 08 APR 2010

SW-3, 11 MAR 2010 to 08 APR 2010

ELEV 73 Rwy 28 Idg 4702'



CATEGORY	A	B	C	D
LNAV MDA	1020-1¼ 954 (1000-1¼)	1020-1½ 954 (1000-1½)	1020-3 954 (1000-3)	NA
CIRCLING	1020-1¼ 947 (1000-1¼)	1020-1½ 947 (1000-1½)	1020-3 947 (1000-3)	NA