

LOC I-UNI	APP CRS	Rwy Idg	5600
108.75	247°	TDZE	765
		Apt Elev	766

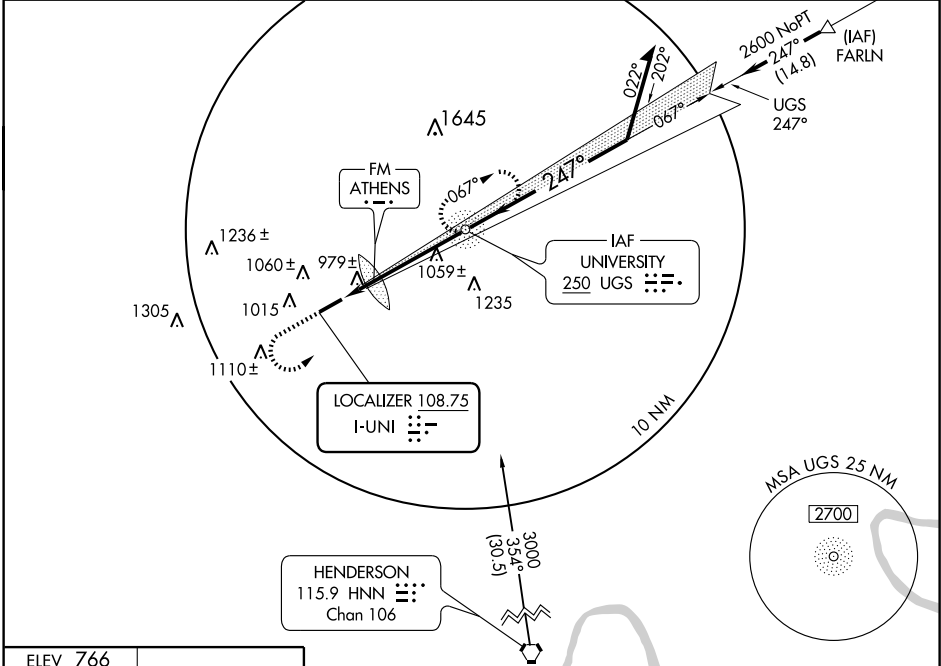
ILS or LOC RWY 25

ATHENS (ALBANY)/ OHIO UNIVERSITY SNYDER FIELD (UNI)

ADF REQUIRED
 ▲ NA If local altimeter setting not received, use Parkersburg, WV altimeter setting and increase all DH's and MDA's 100 feet.

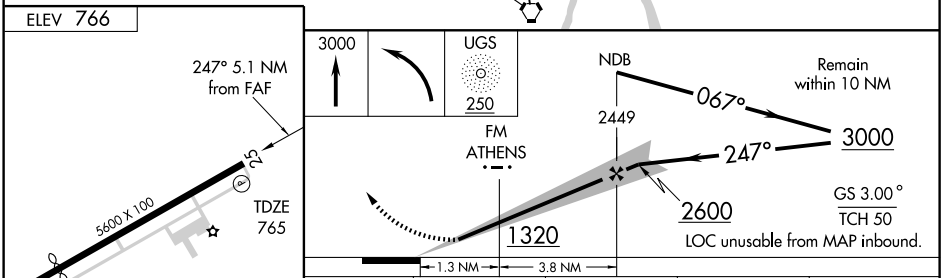
MISSED APPROACH: Climb to 3000, then left turn direct UGS NDB and hold.

AWOS-3 128.325	HUNTINGTON APP CON 120.95 270.1	CLNC DEL 120.95	UNICOM 123.075 (CTAF) 0
--------------------------	---	---------------------------	-----------------------------------



EC-2, 19 NOV 2009 to 17 DEC 2009

EC-2, 19 NOV 2009 to 17 DEC 2009



ELEV 766	3000	UGS 250	NDB 2449	067°	3000	Remain within 10 NM
247° 5.1 NM from FAF	5000 X 100	TDZE 765	1320	247°	2600	GS 3.00° TCH 50
1.3 NM	3.8 NM	LOC unusable from MAP inbound.				
CATEGORY	A	B	C	D		
S-ILS 25		974-1	209 (300-1)			
S-LOC 25	1320-1	555 (600-1)	1320-1½ 555 (600-1½)	1320-1¾ 555 (600-1¾)		
CIRCLING	1380-1 614 (700-1)	1420-1 654 (700-1)	1420-1¾ 654 (700-1¾)	1420-2 654 (700-2)		
	FM MINIMUMS					
S-LOC 25	1240-1	475 (500-1)	1240-1¼ 475 (500-1¼)	1240-1½ 475 (500-1½)		
CIRCLING	1380-1 614 (700-1)	1420-1 654 (700-1)	1420-1¾ 654 (700-1¾)	1420-2 654 (700-2)		

MIRL Rwy 7-25
 REIL Rwys 7 and 25

FAF to MAP	4.6 NM				
Knots	60	90	120	150	180
Min:Sec	4:36	3:04	2:18	1:50	1:32

ILS or LOC RWY 25