

ATHENS (ALBANY), OHIO

AL-5861 (FAA)

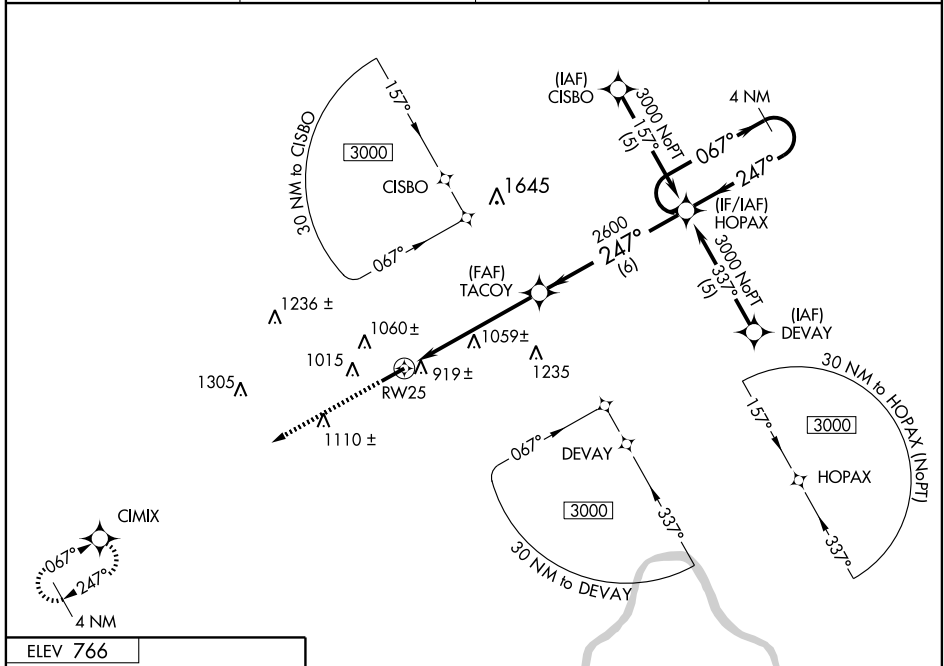
# RNAV (GPS) RWY 25

ATHENS (ALBANY)/OHIO UNIVERSITY SNYDER FIELD (UNI)

APP CRS <b>247°</b>	Rwy Idg <b>5600</b>
	TDZE <b>765</b>
	Apt Elev <b>766</b>

<p><b>▲ NA</b></p> <p>DME/DME RNP-0.3 NA. Baro-VNAV NA below -16°C (3°F). If local altimeter setting not received, use Parkersburg, WV altimeter setting and increase DA and all MDAs 100 feet. Baro-VNAV and VDP NA with Parkersburg, WV altimeter setting.</p>	<p>MISSED APPROACH: Climb to 3000 direct CIMIX WP and hold.</p>
--	---

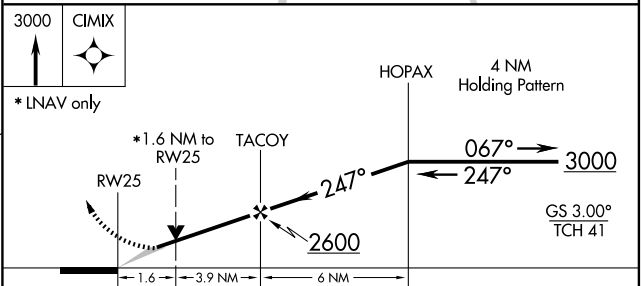
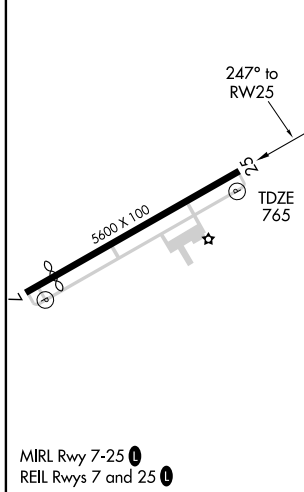
AWOS-3 <b>128.325</b>	HUNTINGTON APP CON <b>120.95 270.1</b>	CLNC DEL <b>120.95</b>	UNICOM <b>123.075 (CTAF) ①</b>
--------------------------	---	---------------------------	-----------------------------------



EC-2, 19 NOV 2009 to 17 DEC 2009

EC-2, 19 NOV 2009 to 17 DEC 2009

ELEV 766
----------



CATEGORY	A	B	C	D
LPV DA	NA			
LNAV/VNAV DA	1180-1½ 415 (500-1½)			
LNAV MDA	1320-1	555 (600-1)	1320-1½ 555 (600-1½)	1320-1¾ 555 (600-1¾)
CIRCLING	1380-1½ 614 (700-1½)	1420-1½ 654 (700-1½)	1420-1¾ 654 (700-1¾)	1420-2 654 (700-2)

ATHENS (ALBANY), OHIO  
Orig-A 08325

ATHENS (ALBANY)/OHIO UNIVERSITY SNYDER FIELD (UNI)  
39°13'N - 82°14'W

# RNAV (GPS) RWY 25